

# EQUIPMENT HEALTH MONITORING


Maximize uptime, reliability and efficiency.





LEARN MORE

## MULTI-VARIANT, WIRELESS SENSING WITH COMPACT HONEYWELL VERSATILIS TRANSMITTER (HVT)


### FEATURES

 Vibration, Surface temperature, Acoustics, Ambient (Pressure, temperature, Humidity)

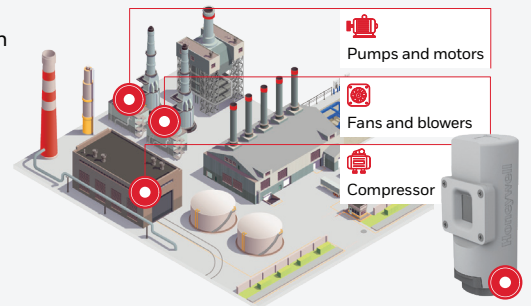
 Remote configuration changes


 BLE & LoRAWAN based


 ATEX, Marine, NAMUR Certified

 Vibration Raw waveform on BLE, Statistical parameter, FFT data

 IP66/67



 Pumps and motors


 Fans and blowers


 Compressor



## CONNECT, CONFIGURE AND VIEW EQUIPMENT HEALTH DATA THROUGH BLUETOOTH


### FEATURES


 Use Mobile, Tablet, Laptop (iOS, Windows, Android)

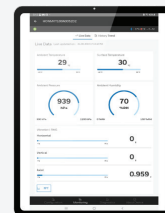
 Historical trend

 Local Monitoring and Troubleshooting on the go

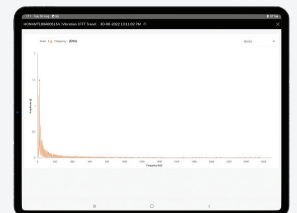
 Bulk Configuration of devices

 Raw and FFT spectrum

 Bulk Firmware update



View and share - live and historical data





Frequency Spectrum for Vibration and Acoustics





## REMOTE MONITORING OF EQUIPMENT HEALTH AT ENTERPRISE LEVEL


### FEATURES


 On-premise solutions with remote clients

 Trend & Spectrum View

 Intuitive Hierarchical view of assets

 Automated reports

 Alarms over Email

 Remote device configurations



**Honeywell**