

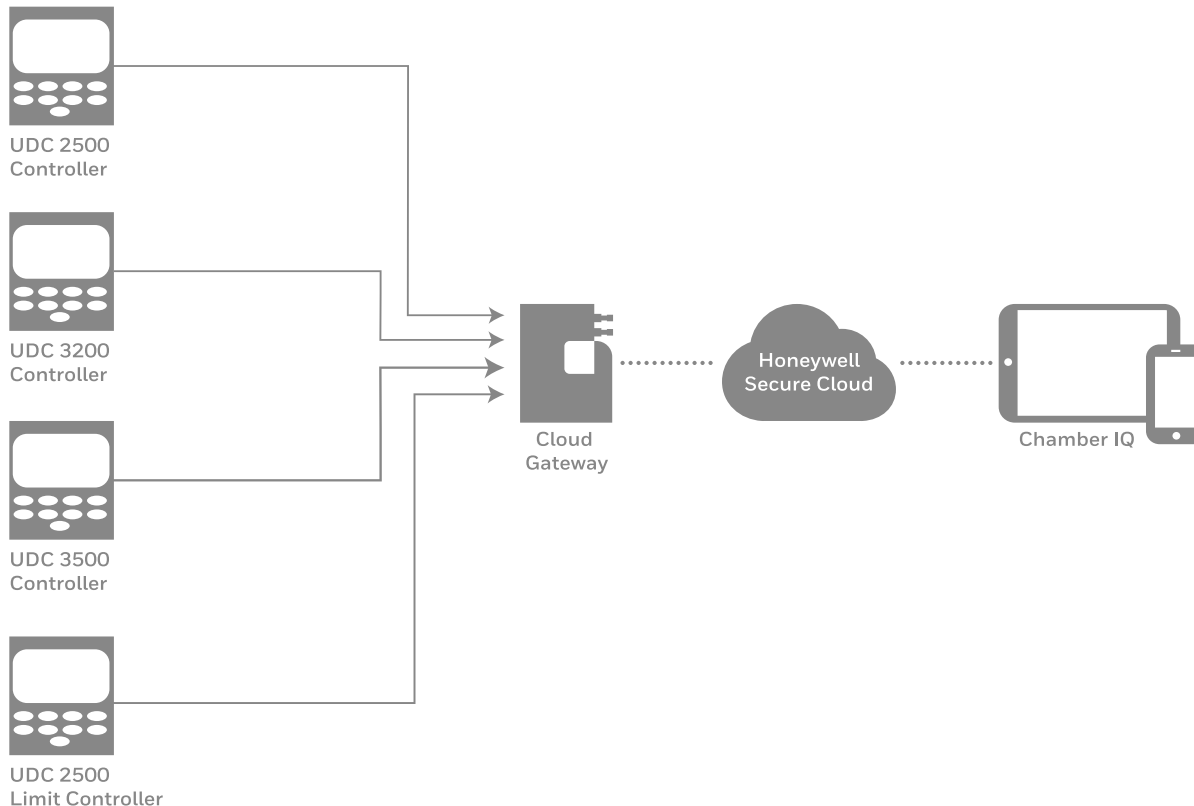
**CHAMBER IQ
INSIGHT
ABOVE.
PERFORMANCE
BEYOND.**



Honeywell

ELEVATE YOUR TEMPERATURE INSIGHT QUOTIENT

Honeywell Chamber IQ is a remote monitoring solution that securely connects your thermal equipment UDC temperature and limit controllers providing critical process data and alarms anytime, anywhere, on any smart mobile device, improving responsiveness, efficiency and downtime.



IMPROVE VISIBILITY.

UNLEASH PRODUCTIVITY.

In most chamber-based process systems, performance data gets trapped down at the equipment level. To grab a reading or catch alerts, you've got to be there, and stay there. That's impractical and unproductive.

BUT WHAT IF YOU COULD...

View and share data before you get to the equipment?

Get real-time alerts when parameters exceed limits?

Track historical data to see when and why issues occurred?

IT'S ABOUT TIME.

Freed from local equipment monitoring, imagine how much time you'll save and how much more proactive your team can be. Leveraging Chamber IQ's real-time alerts and notifications, you can unleash your process potential and drive unprecedented performance. This is the solution you've been waiting for.

TAKE ACTION TO PREVENT COSTLY DISRUPTIONS.

Now you and your team can more proactively troubleshoot the problems that lead to process disruptions, unplanned downtime and lost profits. They'll be able to diagnose issues from anywhere and arrive at the machine with the right tools and knowledge for a faster fix – so your system stays up and stays up and optimized.

GET THE RIGHT INFORMATION, IN THE RIGHT HANDS, AT THE RIGHT TIME.



MONITOR

See real-time and trending data, and get alerts when key parameters are outside normal limits.



MANAGE

Connect everyone from management to maintenance with insights that drive smarter decisions.



MAXIMIZE

Stop waiting for faults and failures that can lead to shutdowns – get ahead of trouble and maximize uptime.



SEE EVERYTHING WITHOUT BEING EVERYWHERE.

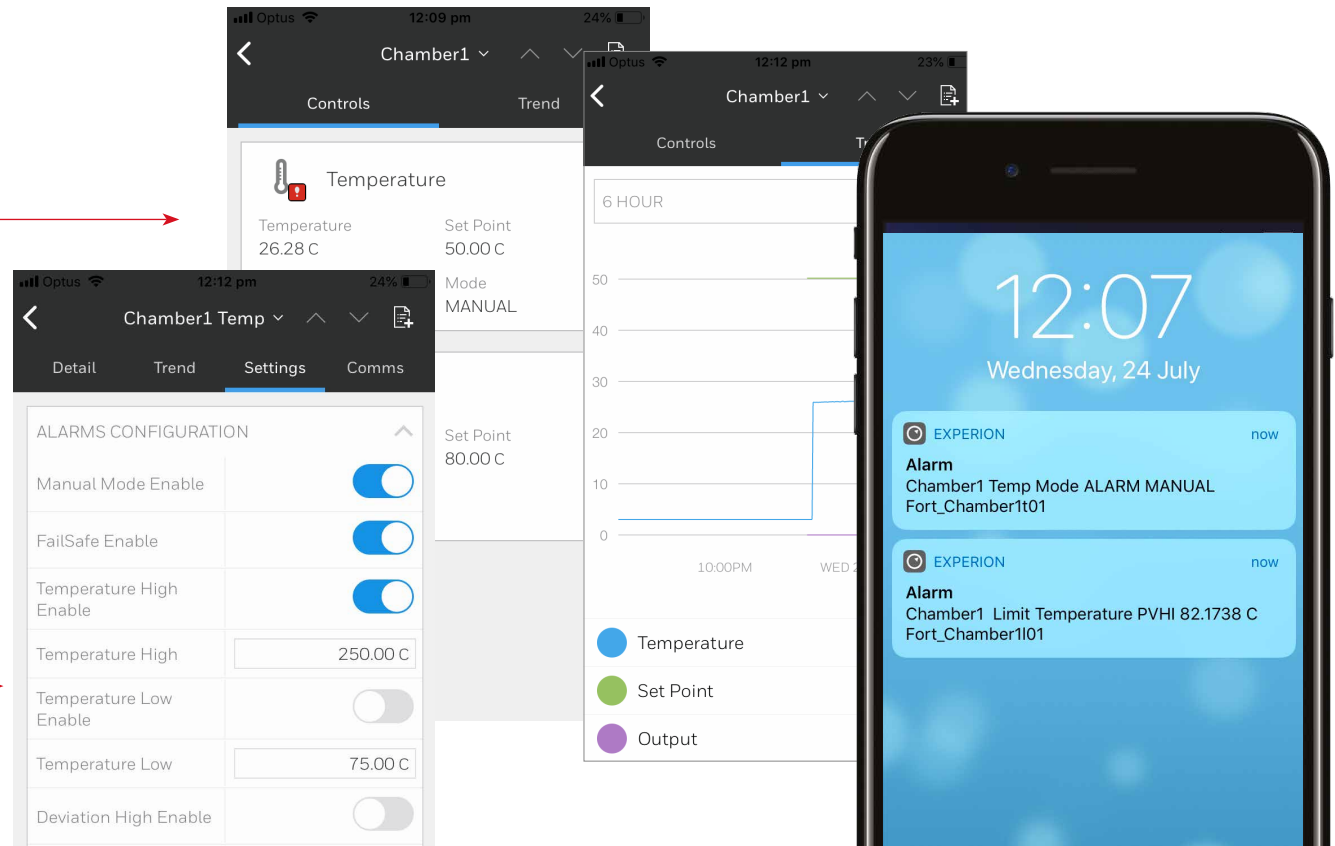
Elevate your thermal insight quotient with real-time, actionable data that helps you run smarter.

View system-wide data for each piece of process equipment with connected UDC Controllers and share it up the management chain – to make better process decisions.

See information such as:

- Process temperature
- Set point
- Output
- Historical trends
- ...and more

See which alarms have been configured with your current system. →



Solve Your Toughest Challenges with **HONEYWELL CHAMBER IQ.**

Improve uptime, safety and efficiency while maximizing plant production through downtime avoidance and performance insights

Take quicker action with remote monitoring and alerts

Use historical trends to be proactive instead of reactive

Reduce cycle service time with remote troubleshooting and prioritizing maintenance

Chamber IQ is also compatible with Honeywell Forge, the leading Enterprise Performance Management tool for industrials.

Elevate your Chamber IQ.

Visit honeywellprocess.com/Chamber-IQ to learn more.

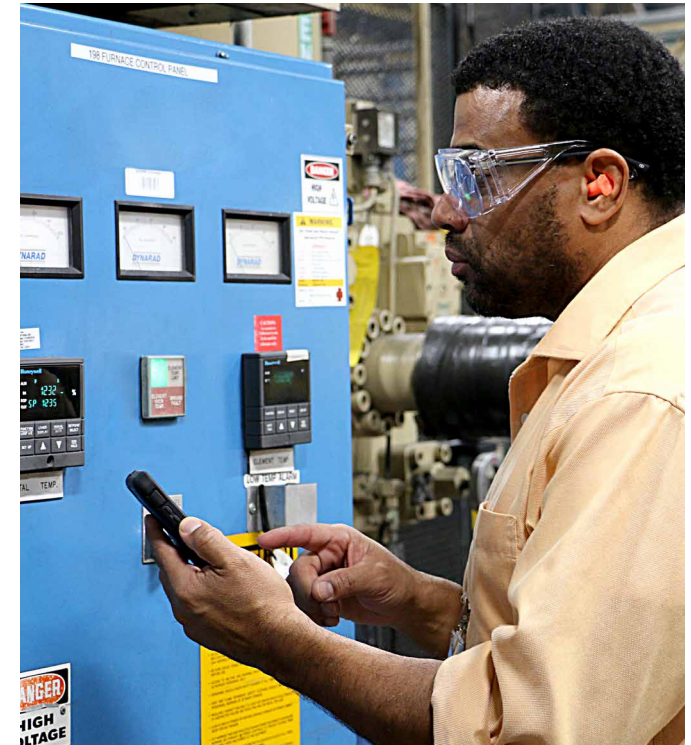
For more information

To learn more about our products, visit honeywellprocess.com or contact your Honeywell Channel Partner.

Honeywell Process Solutions

Honeywell Process Measurement & Control (PMC)
1250 West Sam Houston Parkway South
Houston, TX 77042
honeywellprocess.com

BR-19-32-ENG | 08/19
© 2019 Honeywell International Inc.



**THE
FUTURE
IS
WHAT
WE
MAKE IT**

Honeywell