



QUARTERLY NEWS / Q1 - 2020

## BENEFITS GUARDIANSHIP NEWSLETTER

Welcome to the new quarterly BG e-Newsletter. Here you will find the latest product updates, new release information, industry news and Honeywell Forge for Industrial solution articles.

In this issue,

- Introduction to UniSim Tutor Web Server
- Recommended UniSim Design OTS builds
- Learn how to save engineering time with new UniSim Design workflow enhancements
- Learn about enhancements to PBO provided in PBM R510
- DynAMo Metrics and Reporting HF5, ACM 321.2 HF12, and DynAMo Operations Suite R230.2 Patch 2 are available for download
- Profit Suite R502.1, PS R442.1 Patch001, and TaiJI PID R310.2 Patch are now available for download

And don't forget to watch our latest video on the new Honeywell Forge for Industrial offering to see how it can transform your business today.

If you have any questions or comments, don't hesitate to contact us.

[GlobalBGPDeliveryCentre@honeywell.com](mailto:GlobalBGPDeliveryCentre@honeywell.com)



### UNISIM® COMPETENCY SUITE

- UniSim Tutor Web Server
- Recommended USD builds

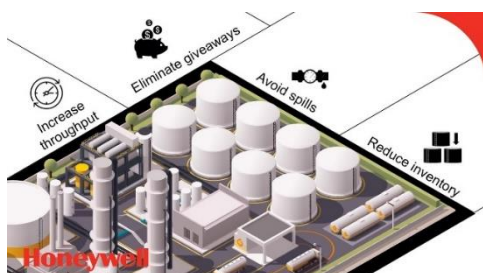
[READ UNISIM COMPETENCY ARTICLES](#)



### UNISIM® DESIGN SUITE

- User Workflow Improvements
- Save Engineering Time

[READ UNISIM DESIGN ARTICLES](#)



### PROFIT™ BLENDING AND MOVEMENT

- Profit Blend Optimizer enhancements in PBM R510

[READ PBM ARTICLES](#)



### DYNAMO® ALARM AND OPERATIONS

- Usability enhancements with quality improvements
- DOS R230.2 Patch 2 is available for download

[READ DYNAMO ARTICLES](#)



### PROFIT™ SUITE

- Summary of 4Q19 Profit Suite and CPM articles

[READ PROFIT SUITE ARTICLES](#)



:: If you received this Honeywell notification from an associate and would like to receive your own copy, [please subscribe](#) > Get the latest news in your inbox!

#### Training Classes

Find the upcoming training to improve your knowledge.

[SAVE YOUR SPOT](#)

#### OnLine Support



- [Create a Support](#) Request online.
- [Monitor](#) your Support Request
- Visit the [Request Help](#) page.

#### Webinars

Get more knowledge!



[WATCH OUR ON-DEMAND WEBINARS](#)

[> Try the Knowledge Base <](#)

[UPCOMING PRODUCT RELEASES | CONTACT](#)

## UniSim® Competency Suite

UniSim Competency Suite is the most comprehensive suite of Operator Competency and Training tools available today. UniSim Tutor is part of the UniSim Competency Suite of applications. UniSim Tutor is a knowledge-based assessment application used to train and evaluate Operators' understanding of their plant's processes. Results of these assessments can be configured to be automatically stored in UniSim Curriculum as part of a competency management solution.

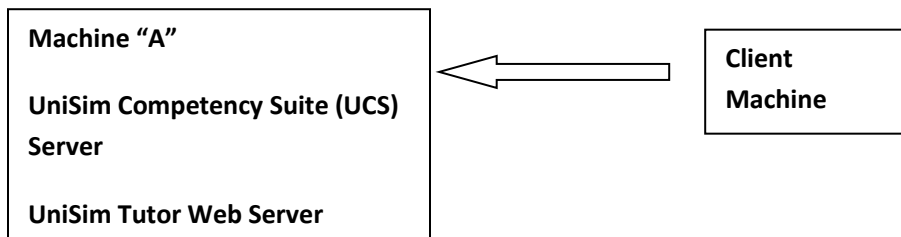
To access other information about UniSim Competency Suite, customers are invited to register to use the Knowledge Base. Please follow [this link](#) for full details.

### Introduction to UniSim Tutor Web Server

UniSim Tutor is a knowledge capture and propagation tool used to help process operators improve their problem diagnosis and trouble shooting skills. For easy access the student interacts with the tool using a web browser. The content for the trainee i.e. the exercises are created by the content developer using the **UniSim Tutor desktop application** which, for security reasons, is stored in an SQL database. UniSim Tutor accesses the SQL database using the **UniSim Competency Suite Server**. The trainee taking an exercise interacts with the content using a web browser for which it is necessary to install an additional server i.e. the **UniSim Tutor Web Server**. Installing UniSim Tutor Web Server will automatically turn on all the **Internet Information Services (IIS)** that are required to serve up the Tutor website to connected clients. If IIS is not enabled, then it can be enabled from control panel Windows feature turn on and off utility.

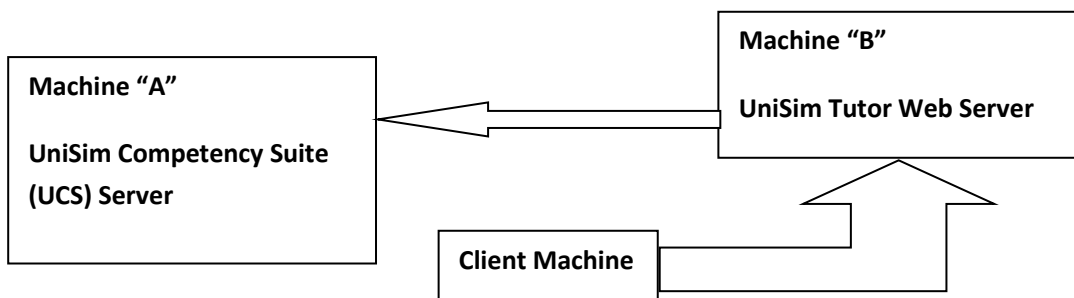
Both **UniSim Tutor Web Server** and **UniSim Competency Suite Server** only need to be installed on one machine, it is possible to install the servers on a single machine or two separate machines. Client machines only need a browser and a URL to access the Tutor content for training no other install is required for client access.

### UniSim Web Tutor – Single Server Installation



This is the simplest method to configure Tutor setup as **UCS server & Tutor Web server** will be installed on the same machine. Single server setup works in both Domain as well as workgroup. Tutor Web application can be accessed from the client computer using a web browser with the following URL <https://localhost/tutor> or <https://Machinename/tutor>. Honeywell recommends enabling SSL for the Tutor website however it will still function in a non-secure setting (using http).

### UniSim Web Tutor – Two Server Installation

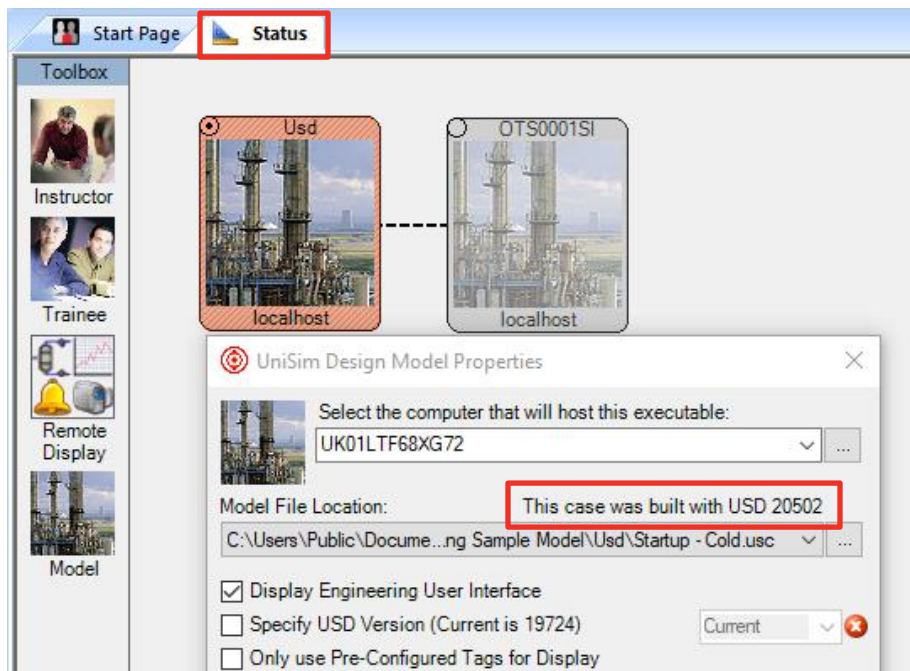


To distribute the load in a Tutor Web installation, it is possible to install server components on different machines. These machines must be in **domain**, which will provide enhanced security to allow credentials to be passed between servers. **NOTE:** Two server setup is not possible if the machines are in a **workgroup**.

The machines hosting the servers (UCS server, Tutor Web server) and all the clients must be in same domain. UniSim Competency Suite installation guide has the detailed steps (like Enabling delegated authentication, IIS application Pool identity configuration, IIS authentication section configuration, Enabling SSL & security configuration) which are mandatory for configuring Tutor Web in distributed server mode. Tutor Web application can be accessed from any client machine using web browser [https://webserver\\_machinename/tutor](https://webserver_machinename/tutor).

## **Unisim Design OTS build recommendation**

TAC has detected that some customers are experiencing instability with a subset of USD OTS builds. The builds known to be affected are R450 OTS 20558-20571 and R460 OTS 21509-21515. Customers using these builds are advised to contact us. Check by looking at the status display in USO, right click the USD engines, select “properties” to view the case build details (Engineer User Role necessary).



## **Operator Competency Software Updates available**

Operator Competency Software Updates are now available for currently supported versions of UniSim Competency Suite

### **UniSim Competency Suite R470 Patch Releases... (no patch released yet)**

### **UniSim Competency Suite R461 Patch Releases... (no patch released yet)**

### **UniSim Competency Suite R460 Patch Releases...**

The latest patch for UniSim® Competency Suite R460 is Patch 5 (released on March 20, 2019). The main corrections are described in the previous quarter newsletters.

### **UniSim Competency Suite R452 Patch Releases...**

The latest patch for UniSim® Competency Suite R452 is Patch 4 (released on March 27, 2019). The main corrections are described in the previous quarter newsletters.

### **UniSim Competency Suite R451 Patch Releases...**

The latest patch for UniSim® Competency Suite R451 is Patch 2 (released on April 11, 2018). The main corrections are described in the previous quarter newsletters.

**Article submitted by – Rakesh Kumar V G, HPS Technical Support – Operator Competency.**

[Back Home](#)

## UniSim® Design Suite



### New Usability features in UniSim Design R470

This month's article describes some of the changes made in UniSim Design R470 to improve usability.

All customers, who have not yet done so, will need to register to use the Knowledge Base links in this article. Please follow [this link](#) for full details. Having registered please visit <https://www.honeywellprocess.com/support> and Login before following the links in this article:

Full details of UniSim Design R470 may be found in the Knowledge Base here: [UniSim Design Suite R470 Information](#)

An archive of all the UniSim Design Guardian Newsletter articles can be found [here](#).

The following features are covered:

- Customizable Standard Conditions & what properties they affect
- New '...Flashed@ Std Cond' stream Correlations
- Object Description – flowsheet label improvements
- New 'Stream Thickness Scheme'
- Calc Order Tool reporting improvements
- Flowsheet lock Improvements
- Recycle and Adjust Improvements
- Case Scenario Manager Improvements

### **Customizable Standard Conditions & what properties they affect**

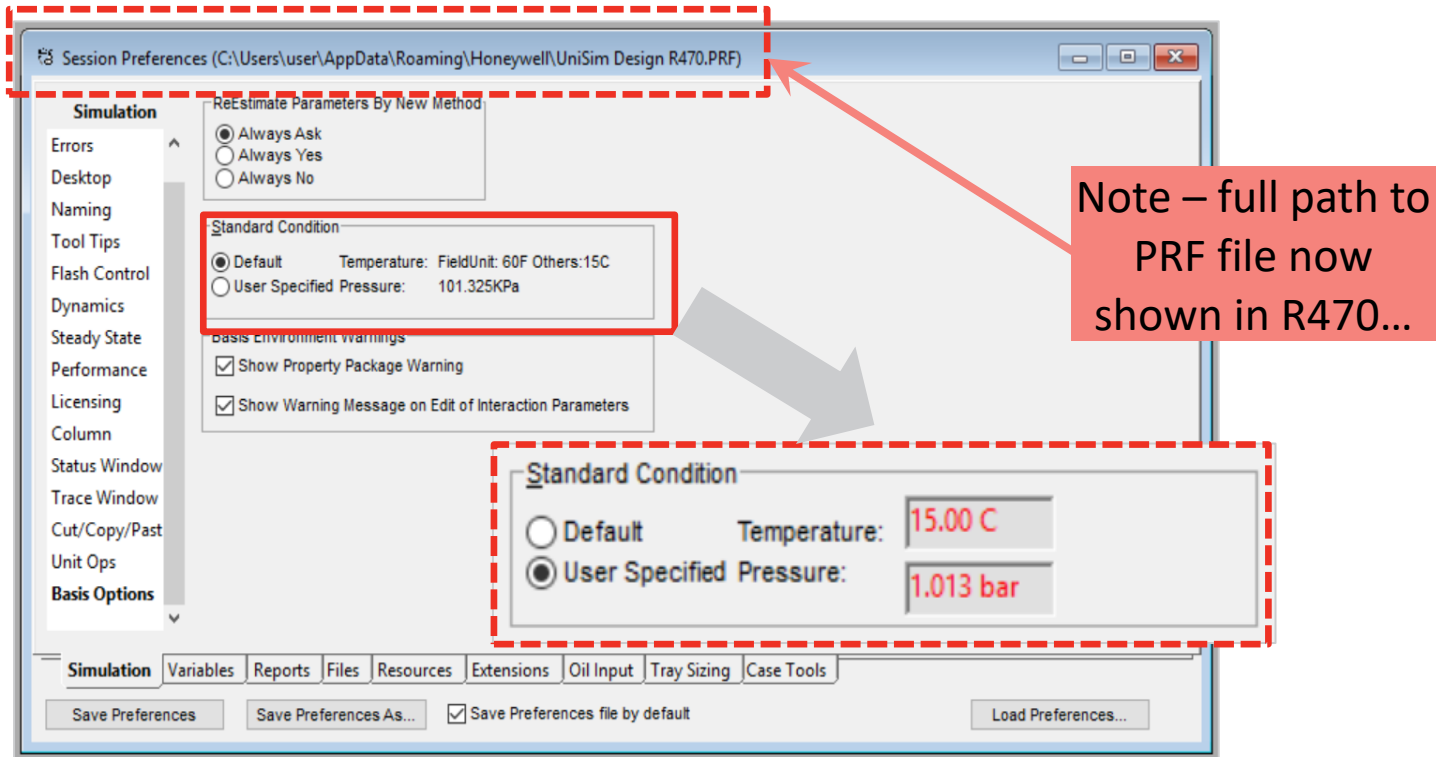
Historically the Standard Conditions in UniSim Design were fixed and could not be adjusted, now the user may set them explicitly, by selecting on the UniSim Design Preferences (**Tools > Preferences** menu option):

Either

- Default: 1 atm and 15C (If C or K temperature units are in use) or 60F (F or R Temperature units)

Or

- User specified from **Simulation** tab **Basis Options** page in **Preferences**



Note as well another change in UniSim Design R470 - now the location of the PRF file (saved preferences) is shown explicitly

For more information about standard conditions in UniSim Design please see the Knowledge Base article [71229](#) - What are the Standard Conditions in UniSim Design?

### Which stream correlations are affected?

A change in standard conditions affects all the properties on the Conditions and Properties pages of the stream which include the keyword 'Std' but not the keyword 'ideal'. For example, 'Std. Gas Flow' is affected because this uses the density of an ideal gas at the specified standard conditions but 'Std Ideal Liq Vol Flow' is not affected because this is based on the weighted average density calculated using the 'Ideal Liquid Density' property of each component.

Stream Name	Feed 1	Vapour Phase	Liquid Phase
Vapour / Phase Fraction	0.9002	0.9002	0.0998
Temperature [C]	15.56	15.56	15.56
Pressure [bar]	41.37	41.37	41.37
Molar Flow [kgmole/h]	298.8	269.0	29.82
Mass Flow [kg/h]	7596	6383	1214
Std Ideal Liq Vol Flow [m3/h]	19.95	17.42	2.534
Molar Enthalpy [kcal/kgmole]	-2.153e+004	-2.074e+004	-2.865e+004
Molar Entropy [kJ/kgmole-C]	149.8	154.4	108.3
Heat Flow [kcal/h]	-6.433e+006	-5.579e+006	-8.543e+005
Liq Vol Flow @Std Cond [m3/h]	<empty>	<empty>	2.752
Fluid Package	Basis-1	Basis-1	Basis-1
Phase Option	Multiphase	Multiphase	Multiphase

Stream Name	Feed 1	Vapour Phase	Liquid Phase
Act. Volume Flow [m3/h]	124.0	121.4	2.584
Std. Gas Flow [STD_m3/h]	7434	6692	741.7
Std. Ideal Liq. Mass Density [kg/m3]	380.7	366.4	478.9
Liq. Mass Density [Std. Cond] [kg/m3]	<empty>	<empty>	441.0
Liq. Vol. Flow [Std. Cond] [m3/h]	<empty>	<empty>	2.752
Liq. Vol. Flow - Sum[Std. Cond] [m3/h]	2.752	0.0000	2.752
Liq. Vol. Flow-Flashed@Std Cond [m3/h]	0.0000	<empty>	<empty>
Gas. Vol. Flow-Flashed@Std Cond [STD_m3/h]	7434	<empty>	<empty>
Act. Vol. Flow-Flashed@Std Cond [m3/h]	7395	<empty>	<empty>

For more information please see the Knowledge Base article [71213](#) – “How are the various volume flow properties calculated?”

## New ‘...Flashed@ Std Cond’ stream Correlations

A further change for UniSim Design R470 is the addition of several new stream correlations:

- Liq. Vol. Flow-Flashed@Std Cond
- Gas. Vol. Flow-Flashed@Std Cond
- Act. Vol. Flow-Flashed@Std Cond

Here the overall stream is flashed to the specified standard conditions and then the total liquid or gas flows are displayed.

### How does this differ from the existing Std. properties?

For the other ‘..Std.’ properties no flash is done to work out what phases are present at standard conditions. They simply use the COSTALD (corresponding states) density (for liquid) or ideal gas molar volume (for gas) to work out what density the stream and each phase would have at standard conditions

For more information please see Knowledge Base article [105214](#) - New ‘...Flashed@ Std Cond’ stream Correlation”.

### Object Description – flowsheet label improvements

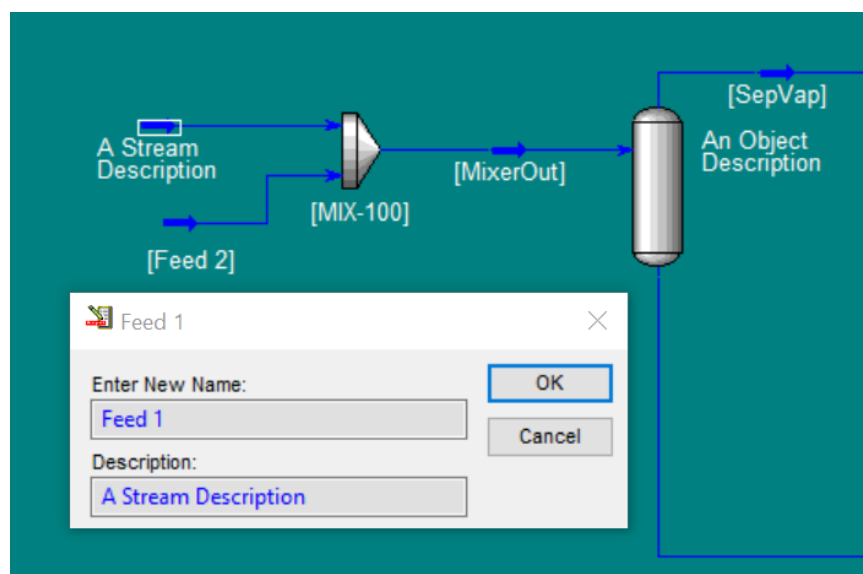
Object Description is one of the properties that can be shown as the PFD label by using a shortcut key (in this case **Shift+R**).

See the **Help > Hot-Key List** menu option and then look on the **PFD** page for all the possible Shift+ combinations. Press **Shift+N** to return to Object Names.

The Object Description may be modified on the **Worksheet** tab, **Notes** page of a Material Stream or the **Design** tab **Notes** page of a Unit Operation. Or select the object on the PFD and press the F2 key to bring up an editing window for **Name** and **Description** as shown below.

If an object does not have a Description entered, then the object Name will show instead when **Shift+R** is pressed. From UniSim Design R470 onwards the Name shows in [square brackets] as an indicator that no Description is entered (as shown below).

A typical use for the Object Description might be to enter the PFD or P&ID tag for given streams/unit operations. Hence giving extra flexibility when modelling.



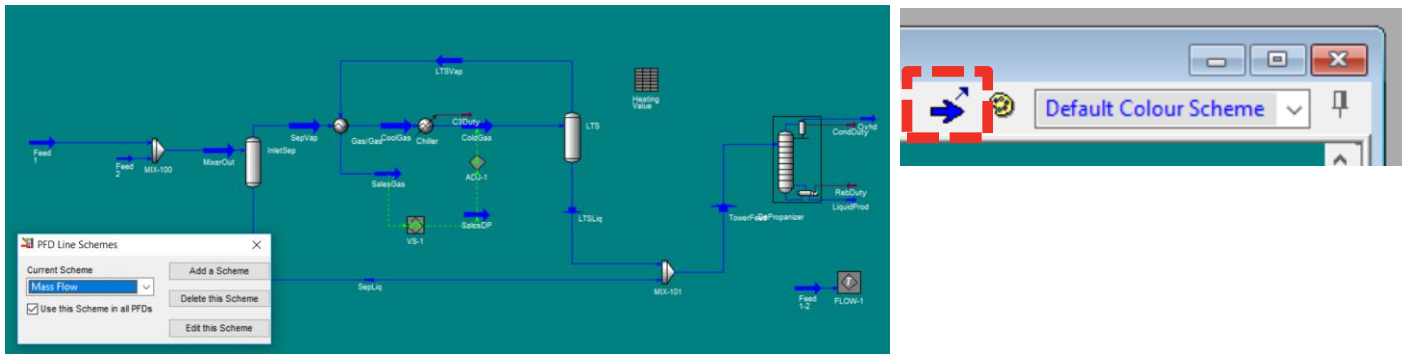
For more information about “Object Description”, please see the Knowledge Base article [105126](#).

There are many Shift +?  
Combinations for Flowsheet  
label variables  
See Help > Hot Key List > PFD

## New 'Stream Thickness Scheme'

In previous versions of UniSim Design, changing the thickness of streams on the flowsheet was possible only by manually adjusting each stream object on the PFD. Now users have the possibility of configuring the flowsheet so that streams size automatically based on a selected variable (by default the mass flow).

The Stream Thickness Scheme is available on the PFD toolbar button as shown in the image below. By clicking the red-highlighted button a dialogue box appears allowing the user to enable the scheme, configure the variable used and choose the default boundary values for each stream icon size.



For more information about the "Stream Thickness Scheme", please see the Knowledge Base article [99193](#).

## Calc Order Tool reporting improvements

The Calculation Order tool enables the user to see the order in which each object on the flowsheet is dealt with by the UniSim Design steady-state solver. More details can be found in section 11.23 of the User Guide documentation.

In UniSim Design R470 the tool now shows the total Elapsed Time of each run and percentage of each object's Cumulative Time against the total Elapsed Time. Calc Order Tool results can be displayed on the flowsheet as the label against each object by using the hot key combination **Shift + J**. Press this combination again to toggle to a different result.

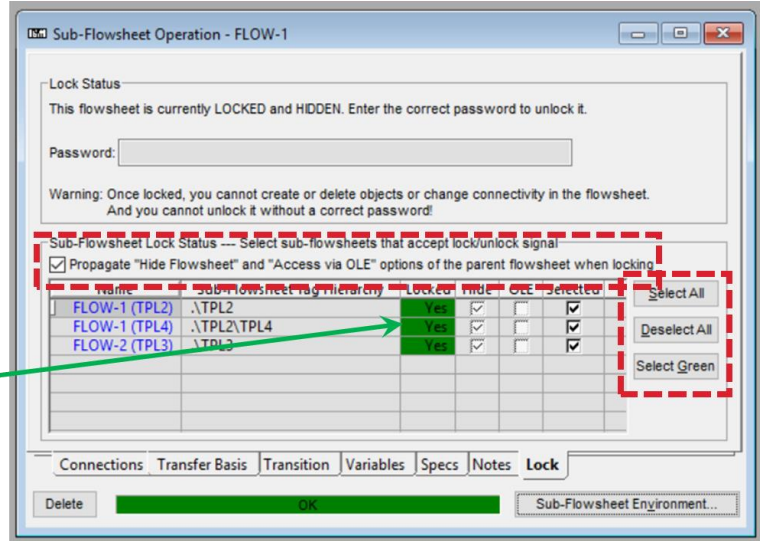
Run Index	Calc Order	Unit Op Name	Calc Count	Type	Flowsheet	Calc Level Record	Calc Level	Elapsed Time	Cumulative Time	% of Total
1	21637	RebDuty @COL1	475	Energy Stream	DePropanizer (COL1)	500	500	000:00:00.00	000:00:00.00	0.10
1	21638	LiquidProd @COL1	475	Material Stream	DePropanizer (COL1)	500	500	000:00:00.00	000:00:00.00	0.14
1	21639	Reflux @COL1	713	Material Stream	DePropanizer (COL1)	500	500	000:00:00.00	000:00:00.00	0.12
1	21640	Main TS @COL1	713	Tray Section	DePropanizer (COL1)	500	500	000:00:00.00	000:00:00.00	0.14
1	21641	Boilup @COL1	713	Material Stream	DePropanizer (COL1)	500	500	000:00:00.00	000:00:00.00	0.18
1	21642	Main TS @COL1	714	Tray Section	DePropanizer (COL1)	500	500	000:00:00.00	000:00:00.00	0.15
1	21643	Ovhd @COL1	476	Material Stream	DePropanizer (COL1)	500	500	000:00:00.00	000:00:00.00	0.13
1	21644	Condenser @COL1	476	Partial Condenser	DePropanizer (COL1)	500	500	000:00:00.00	000:00:00.00	0.34
1	21645	LiquidProd @COL1	476	Material Stream	DePropanizer (COL1)	500	500	000:00:00.00	000:00:00.00	0.14
1	21646	Reboiler @COL1	476	Reboiler	DePropanizer (COL1)	500	500	000:00:00.00	000:00:00.00	0.31
1	21647	CondDuty @COL1	476	Energy Stream	DePropanizer (COL1)	500	500	000:00:00.00	000:00:00.00	0.08
1	21648	RebDuty @COL1	476	Energy Stream	DePropanizer (COL1)	500	500	000:00:00.00	000:00:00.00	0.10
1	21649	To Condenser @COL	476	Material Stream	DePropanizer (COL1)	500	500	000:00:00.00	000:00:00.00	0.10
1	21650	To Reboiler @COL1	476	Material Stream	DePropanizer (COL1)	500	500	000:00:00.00	000:00:00.00	0.09
1	21651	Reflux @COL1	714	Material Stream	DePropanizer (COL1)	500	500	000:00:00.00	000:00:00.00	0.12
1	21652	Boilup @COL1	714	Material Stream	DePropanizer (COL1)	500	500	000:00:00.00	000:00:00.00	0.18
1	21653	DePropanizer (COL1)	238	Column Flowsheet	DePropanizer (COL1)	2500	2500	000:00:00.02	000:00:07.16	39.43
1	21654	CondDuty	476	Energy Stream	Case (Main)	500	500	000:00:00.00	000:00:00.00	0.06
1	21655	Ovhd	476	Material Stream	Case (Main)	500	500	000:00:00.00	000:00:00.00	0.21
1	21656	RebDuty	476	Energy Stream	Case (Main)	500	500	000:00:00.00	000:00:00.00	0.10
1	21657	LiquidProd	476	Material Stream	Case (Main)	500	500	000:00:00.00	000:00:00.05	0.15
1	21658	ADJ-1	238	Adjust	Case (Main)	3500	3500	000:00:00.00	000:00:00.40	2.28

## Flowsheet lock Improvements

Any flowsheet within a UniSim Design model can be locked and hidden to make it impossible to change topology and invisible (including OLE access) by making settings on the Lock tab.

In UniSim Design R470 this feature has been enhanced to allow the user to automatically propagate the lock/unlock signal to contained flowsheets.

Green indicates that Sub-Flowsheet uses same password as parent



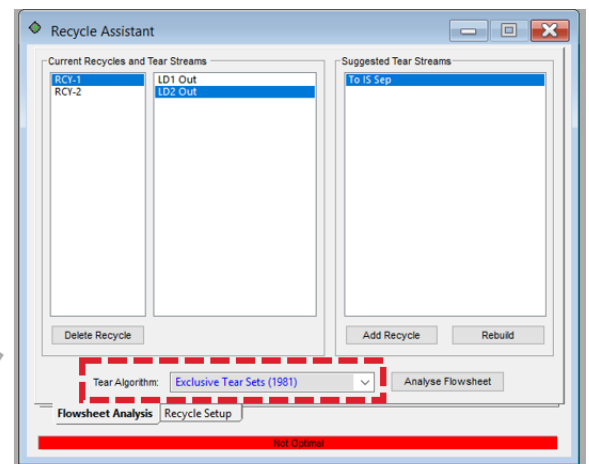
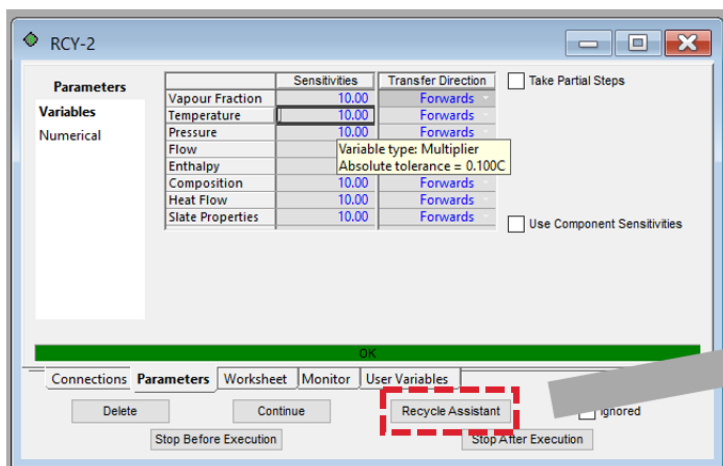
For more information, please see the Knowledge Base article [105127](#).

## Recycle and Adjust Improvements

### Recycle

In UniSim Design R470 two new features have been added to the Recycle.

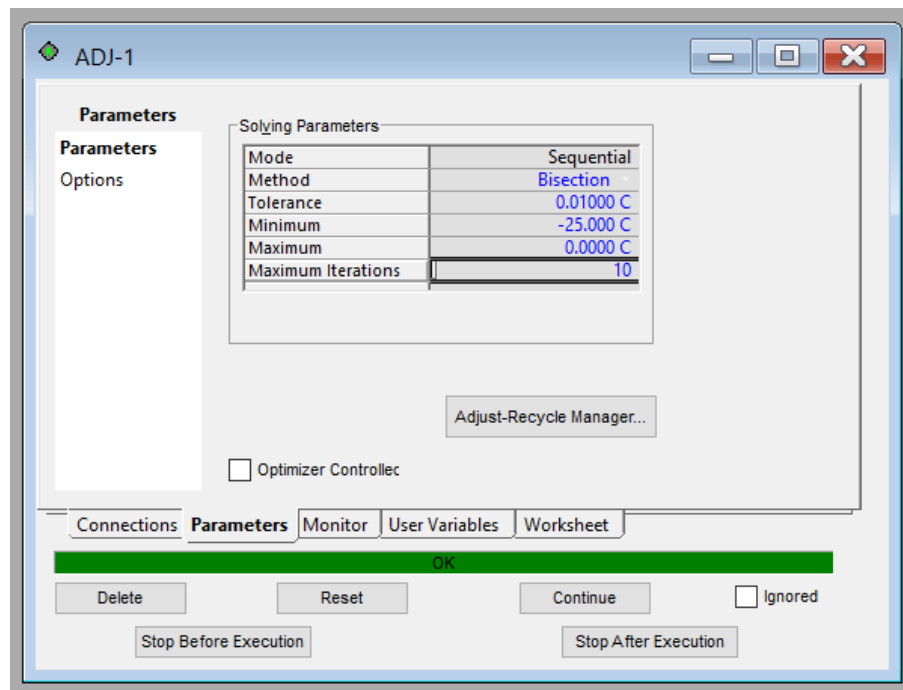
- A new algorithm “Exclusive Tear Sets (1981)” has been added to help suggest Recycle tear stream locations
- The yellow flyby window on the Recycle Sensitivities on the Parameters tab Variables page now shows the Absolute Tolerance that is used internally





## Adjust

A simple new Bisection searching method has been added to the Adjust operation. The user needs to enter the range (Minimum and Maximum) and then the adjust method simply bisects the range till an answer is found



## Case Scenario Manager Improvements

Several new features were added to the Case Scenario Manager in UniSim Design R470:

- The user may configure a Scenario to automatically update when a new version of Case is detected
- A new Check & Update Scenario button has been added which can trigger a scan for newer cases (otherwise this happens periodically)
- A new scaling factor option is available, when setting up variable propagation, that allows multiple variables to be scaled by the same factor.
- Improved filtering – The Object Name Filter checkbox located on the lower bottom corner allows the user to filter the variable selection per object instead of entire object class. When the checkbox is checked on, the fourth group Object Name Selecting column will be displayed and listed all the objects which have the current variable selected in the third group. The user can decide which objects should be selected to show the variable by checking on/off the checkboxes.

## Newsletter Articles

We aim to provide articles of interest to the UniSim Design user community. If you have any feedback or have suggestions for topics to cover here please feel free to [contact us](#); we value your input.

*Article submitted by – Dragos Marin, Ilie Stafie & James Martin, UniSim Design Global Support Team.*

## On-demand Webinars

- [Learn How to Auto-Calibrate Kinetic Reactors Using Multiple Datasets](#)
- [Is Tuning & Calibration of Your Reactors](#)

[Back Home](#)

## Profit® Blending and Movement Suite

### PBO Enhancements

**Did you know...?** Profit Blend and Movement (PBM) R510 provides several enhancements to the Profit Blend Optimizer (PBO) application. One of the key enhancements is a new optimization mode – Composite.

As part of the blend configuration carried out by the engineer, desired blend property control objectives are specified. The blending objectives are used by PBO when it carries out the blend optimization calculations.

The default blend objective is Property Control, which minimizes property off-specification deviation i.e. to bring the blend on-spec. This is referred to as **control mode**.

In previous versions, the following alternative blending optimization objectives were available:

- Minimum Cost: to minimize the cost of the blend based on component costs. This is referred to as **cost mode**.
- Minimum Giveaway: to minimize property deviation from the low or high specification limit, based on property costs. This is referred to as **Giveaway mode**.
- Minimum Distance: to minimize deviation from the current target recipe, or from high or low component limits. This is referred to as **Minimum Distance mode**.

PBO now provides an additional blending optimization objective:

- Composite (NEW): this combines three objectives (Minimum Distance, Minimum Giveaway and Minimum Cost) into one composite objective. This is referred to as **Composite mode**, and is set as follows:

$Wt\_A * MinDist + Wt\_B * Giveaway + Wt\_C * Cost + Recipe Damping$

where  $Wt\_A$ ,  $Wt\_B$  and  $Wt\_C$  are the Composite objective weighting factors for Minimum Distance, Giveaway and Cost respectively.

Note: The composite blend optimization mode is only available if the NOVA solver is used. The composite blend optimization mode is NOT available if the MINOS solver is used.

PBO blend optimization is carried out in multiple sequential stages, with each stage optimizing for one of the blending objectives. Each succeeding stage preserves the optimum achieved in the previous stage, while using any remaining degrees of freedom to optimize for an additional objective. The following blending objective combinations may be configured by the engineer:

- Control - Giveaway
- Control - Cost
- Control – Cost - Giveaway
- Control – Giveaway - Cost
- Control – Minimum Distance
- Control - Composite

For more information on BPM, or any of the PBM applications, please contact your Honeywell Account Manager or your local Application

#### **Application Support Contact Information:**

- The Americas: [rac.support@honeywell.com](mailto:rac.support@honeywell.com)
- Europe, Middle East and Africa: [bma.support.emea@honeywell.com](mailto:bma.support.emea@honeywell.com)
- Asia Pacific: [bflex.support.ap@honeywell.com](mailto:bflex.support.ap@honeywell.com)

[Back Home](#)

# DynAMo Alarm Suite

## M&R R202.1 Hotfix 5 + ACM R321.12 Hotfix 2 Announcement

M&R R202.1 Hotfix 5 has been released. The Software Change Notice (with embedded links to media download) has been published to HoneywellProcess.com → Documents.

ACM R321.12 Hotfix 2 has also been released. As this is a small update zip package this has been published to HoneywellProcess.com → Downloads.

### Problems Resolved

M&R R202.1 Hotfix 5 includes the following enhancements:

- Continuous widget layout in PDF reports
- Tag details in Alarm Flood report
- New time range shortcuts
- Modifying the report schedules created by other users
- Customizing the display order of KPIs
- Thresholds for D&E KPIs
- Symptomatic Analysis report – tabular view
- Customizing the definition for alarm flood

The following PARs are resolved with this update:

PAR	Issue Description
RDYNAMO-2079	The “Alarm Properties” icon appears in all the widgets even if D&E connection is not configured.
1-BLF2KTR	Imported report does not work if a base custom report with the same name exists already.
1-BQRJMP6	Stale Alarm Over Time report displays multiple entries for the same tag.
1-BTCNC1X	The criteria of priority change for re-alarms must not be case sensitive.
1-BLF2KRZ	In some systems, M&R is unable to export the reports to PDF.
B7J46YZ	Sometimes, the Unmanaged Tags widget shows incorrect data.
RDYNAMO-2141	Widgets that display trend charts (Ex. Average alarm rate) should not display the aggregate value trend if only one Operator Position is selected. (usability issue).
1-BV5OB3B	Deleting a published report causes the base custom report to disappear from the Custom Report menu. Refreshing the M&R webpage brings up the base custom reports back.
1-BR5CTR5	Enhance Rules Identification to support handling Null values between regular expression characters.
1-BF9STNB	Enhance Rules identification to support same End of Line Marker (EOM) and outcome of Regular expression for end of Column mapping
BU0XPGB	Scheduled Reports with "Grp by OP" option is not being emailed when stacked report has MFA widget
1-AO5LUNH	Improvement in Tag Count Check when Tags Asset is moved within a Site

The SCN can be downloaded from the link below which includes a link to download the zip package:

[DynAMo Metrics and Reporting R202.1 Hotfix 5](#)

Note: This update requires DynAMo Metrics & Reporting R202.1 with or without the earlier hotfixes.

This is a cumulative update that includes DynAMo Metrics & Reporting R202.1 Hotfix 1-4.

ACM R321.12 Hotfix 2 includes the following enhancements:

- Alarm Help support across firewall (Alarm Help Router)
- Experion R511 Support

The following PARs are resolved with this update:

PAR	Issue Description
<b>778S26S &amp; 1-3HP029F</b>	Alarm help support for NORSOK blocks ATTENTION: The resolution for this issue requires Experion R501.6 Hotfix 1. Contact Honeywell Support for the installation package.
<b>1-B4DDCBH</b>	During enforcement, ACM logs the message 'Determine Access Failed to Look Up via ADSI' message as Error in the Event Viewer. Change the message type from Error to Warning.
<b>1-AXE6VJN</b>	For TPN REGPV tags, ACM does not manage the DEVHITP trip point.
<b>1-BE5E4W1</b>	After installing ACM R321.12, TagSync Reconfiguration fails with the error message "Object variable or with block variable not set".
<b>1-BUA463R</b>	While migrating asset data from EMB to the new local Asset Model configuration utility, asset names longer than 50 characters are truncated.
<b>1-BV9GS4R</b>	Alarm Help support across firewall
<b>1-BVQABLL</b>	Console Release operation fails if the size of the base file exceeds 131MB

The update package which includes the SCN can be downloaded from the link below:

[ACM R321.12 Hotfix 2](#)

Note: This update requires ACM R321.12 with or without hotfix 1 (restricted release only).

This is a cumulative update that includes ACM R321.12 Hotfix 1.

If you have any question concerning this Heads-Up Message, then please contact HPS Technical Support

[Back Home](#)

# DynAMo Operations Suite

## R230.2 Patch 2

### What's new in this release

#### DOI

- User can view the LR write back tags from the forecast view of the instructions page by clicking the Limit Write Tag Detail icon. The Write tags will be displayed in a separate column in the LR Variable Limits page.
- Forecast view of the limits will now show the completed instructions along with the future values of all the instructions based on the selected time range.
- User can view the Limit Change Details of the instruction by clicking the View Limit Change Details icon in the instructions console. You can view the modified values along with details like Last Modified By, Last Modified Date, and Actual Start Time. The modified values are highlighted in yellow. Note: The page size in the Limit Change Details grid is taken from the filter panel.

#### DOM

- User can now delete a comment alone from deviation analysis in Deviation Summary, Target Summary and Monitoring snippet pages.

#### DOL

- A new setting Allow\_Appending\_OriginAssetName has been introduced in logbook. This setting will allow the user to disable the parent asset name from appearing as a prefix for all child asset comments belonging to the same parent child hierarchy.

### Issues addressed in this patch

The R230.2 Patch 2 is a cumulative Patch for R230.2. The following table contains issues fixed in R230.2 Patch 2 release. For issues fixed in R230.2 Patch 1, refer to the R230.2 Patch 1 SCN.

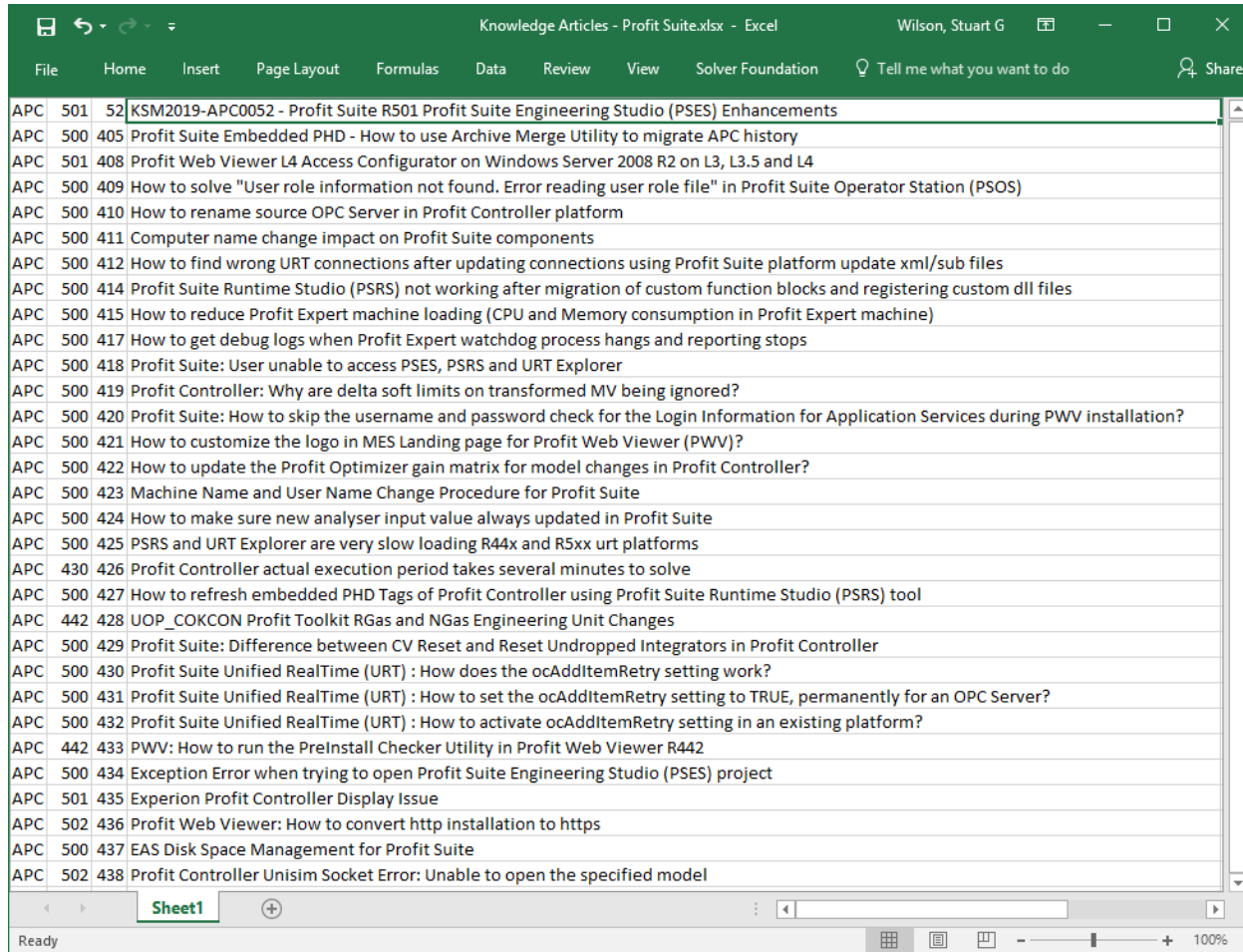
PAR ID/Jira ID	Description
1-BZ20PL7	Logbook comments snippets are not getting saved in shift log after browser refresh.
1-BZD977J	Edit icon is appearing even in edit mode of DET snippet and Matrix snippet
1-BUVHGC2	Delete icon disappears in edit mode of DET snippet.
1-C2PPTJ9	Not able to multiselect targets and provide reasons.
RDOS-4375	Not able to add comments for shift in Matrix Snippet if the comment is formatted. This issue is observed after navigating away from the page and coming back to the page
RDOS-4508	System should give a warning if the user leaves the Comments page without saving the comments.
RDOS-4504	The update button is hidden when the comments pop up is maximized and viewed.
RDOS-4514	When a comment is updated, the focus of the page shifts to the top of the page
RDOS-4596	Hide Create Standing Order icon in Comments page.

<b>RDOS-4956</b>	Formatting of the comments in Matrix Snippet is lost when the report is saved and reopened for editing.
<b>RDOS-4597</b>	Apply Preference icon is not appearing in the Comments page.
<b>RDOS-4835</b>	Recursive cross-shift summary's hang fire jobs are not getting deleted on deletion of the cross-shift summary.
<b>1-BZ7G6XD</b>	In shift summary display table, data is missing from the table for a few snippets after submission.
<b>RDOS-4846</b>	Rollup DET with default columns, show error in fetching data in print preview
<b>RDOS-4955</b>	Additional dialog is being added in Matrix snippet when user clicks edit comment after report submission.
<b>RDOS-4947</b>	In the comments page, performance issue is observed because of memory leak while switching the assets multiple times
<b>RDOS-5056</b>	Sometimes the task page does not load even when there is no load on the system.
<b>RDOS-4513</b>	Clicking any action (like Save, acknowledge etc.) is causing the grid to move to the first page when there are multiple pages in DOM Summary page
<b>RDOS-4530</b>	The filtering of contributing assets based on target groups is having issues
<b>RDOS-4561</b>	Split based on shift is creating duplicate deviations.
<b>RDOS-4999</b>	In the Target Management instruction page, the scroll option is not available when there are more records. This behavior is observed only in full screen mode. The page size filter is not filtering the page according to the value set.
<b>1-BYPD5PN</b>	If scope security is applied, then Limit Instruction and Standing Order cannot be activated at the child level in the hierarchy
<b>RDOS-4509</b>	Asset sequence under asset list dropdown in any DOS module should be according to the order set in the asset hierarchy node
<b>RDOS-4527</b>	Asset display name should be displayed instead of the Asset Name in the asset drop down in copy instruction template page and Operations Alert Client page

# Profit Suite

## Profit Suite Knowledge Article Quarter: Summary of Articles – 4Q19 (to end December)

Please refer to the August 2018 BG Newsletter for all the details regarding this Profit Suite Knowledge Article Quarter series and this quarter we publish the Summary of Articles for 4Q19 on the portal below:



Article ID	Article Number	Article Title
APC 501	52	KSM2019-APC0052 - Profit Suite R501 Profit Suite Engineering Studio (PSES) Enhancements
APC 500	405	Profit Suite Embedded PHD - How to use Archive Merge Utility to migrate APC history
APC 501	408	Profit Web Viewer L4 Access Configurator on Windows Server 2008 R2 on L3, L3.5 and L4
APC 500	409	How to solve "User role information not found. Error reading user role file" in Profit Suite Operator Station (PSOS)
APC 500	410	How to rename source OPC Server in Profit Controller platform
APC 500	411	Computer name change impact on Profit Suite components
APC 500	412	How to find wrong URT connections after updating connections using Profit Suite platform update xml/sub files
APC 500	414	Profit Suite Runtime Studio (PSRS) not working after migration of custom function blocks and registering custom dll files
APC 500	415	How to reduce Profit Expert machine loading (CPU and Memory consumption in Profit Expert machine)
APC 500	417	How to get debug logs when Profit Expert watchdog process hangs and reporting stops
APC 500	418	Profit Suite: User unable to access PSES, PSRS and URT Explorer
APC 500	419	Profit Controller: Why are delta soft limits on transformed MV being ignored?
APC 500	420	Profit Suite: How to skip the username and password check for the Login Information for Application Services during PWV installation?
APC 500	421	How to customize the logo in MES Landing page for Profit Web Viewer (PWV)?
APC 500	422	How to update the Profit Optimizer gain matrix for model changes in Profit Controller?
APC 500	423	Machine Name and User Name Change Procedure for Profit Suite
APC 500	424	How to make sure new analyser input value always updated in Profit Suite
APC 500	425	PSRS and URT Explorer are very slow loading R44x and R5xx urt platforms
APC 430	426	Profit Controller actual execution period takes several minutes to solve
APC 500	427	How to refresh embedded PHD Tags of Profit Controller using Profit Suite Runtime Studio (PSRS) tool
APC 442	428	UOP_COKCON Profit Toolkit RGas and NGas Engineering Unit Changes
APC 500	429	Profit Suite: Difference between CV Reset and Reset Undropped Integrators in Profit Controller
APC 500	430	Profit Suite Unified RealTime (URT) : How does the ocAddItemRetry setting work?
APC 500	431	Profit Suite Unified RealTime (URT) : How to set the ocAddItemRetry setting to TRUE, permanently for an OPC Server?
APC 500	432	Profit Suite Unified RealTime (URT) : How to activate ocAddItemRetry setting in an existing platform?
APC 442	433	PWV: How to run the PreInstall Checker Utility in Profit Web Viewer R442
APC 500	434	Exception Error when trying to open Profit Suite Engineering Studio (PSES) project
APC 501	435	Experion Profit Controller Display Issue
APC 502	436	Profit Web Viewer: How to convert http installation to https
APC 500	437	EAS Disk Space Management for Profit Suite
APC 502	438	Profit Controller Unisim Socket Error: Unable to open the specified model

Final note on KAs is the above table shows only the public published articles, however on rare occasions there is a need to share internal/confidential KAs within Honeywell and these are not published publicly, although they also have Article ID numbers, which might account for gaps and apparent missing article numbers.

## **Profit Suite R502.1 is now available for download**

Profit Suite™ R502 builds on R501 and R500 functionality delivering incremental improvements specifically in Profit Executive (PEX), Profit Web Viewer, Profit Suite Engineering Studio, Profit Suite Runtime Studio and Infrastructure (PEX integration with Profit Blend Optimizer (PBO) and new Input/Output OPC logging feature). In addition, Flexera licensing has been improved with one time licensing of multiple activation IDs and bin file validity extending from one to 4 days. Finally, R502 has a strong maintenance release flavour with over 50 Product Anomaly Reports (PARs) fixed. The full details of these new features and functional release specifics/download locations are given below. Please note also, the updating of Intuition Core Components to R292.

### **Summary of the New Features in R502**

**Profit Executive** – specifically the following 3 enhancements have been made:

1. Profit Executive (PEX) has been enhanced to integrate with Profit Blend Optimizer (PBO) software, which required BLC modifications, optimization/solver changes to handle non-linear blend laws and enhancements to Profit Web Viewer (PWV) displays;
2. Introduction of Flowsheet to distribute calculations across flow network, which includes a dynamic and continuous hybrid model allowing for discontinuities and tank hold-up with static non-linear elements e.g. blenders;
3. The Proxy Limits calculations have been further enhanced to incorporate all the above;

**Profit Web Viewer (PWV)** – the following improvements have been made:

1. Lab Update is now supported;
2. Profit Suite Operator Station (PSOS) to PWV theme file migration is now supported;
3. PWV themes are enhanced to include multiple trend, summary, detail views and configurable environment settings e.g. colours at a global or scope role;
4. PWV PEX displays now include a Process Display for the configured PEX Flowsheet;
5. PWV themes developed in older releases can be migrated to R502;

**Profit Suite Engineering Studio (PSES)** – obviously changes required for PEX improvements, but also DMC Converter improvements to handle higher order models and settling times problems.

**Profit Suite Runtime Studio (PSRS)** – changes are made for PEX to allow the hybrid model-based platform to be built and configured, which includes BLC connections to/from the Flowsheet.

**Infrastructure** – infrastructure and configuration changes required for PEX communications to/from PBO have been implemented, but also the following 2 improvements are key:

1. New Input/Output OPC logging feature, which records all OPC reads/writes for all platforms, and for Profit Controller application and MV statuses are also logged. The log is configurable either for max disk space and/or time span limited;
2. Flexera Licensing Improvements include one-time entry of multiple activation IDs in one bin file, whose validity has been extended from one to four days to allow for over weekend activations;

**Honeywell Intuition Core Components R292** – is provided as a separate install to support TLS 1.2, which is only necessary if Profit Web Viewer is installed and is being actively used;

**R502 Functional Release Specifics** – Profit Suite™ R502.1 has been released and is available for download on the Honeywell Process Solutions Support Website (<http://www.honeywellprocess.com>). R502 consists of four files:

Profit Suite R502.1.exe – this is the main patch for the Server and Client sides and should be installed wherever Profit Suite R500.1 has been installed. Since R502 is a cumulative patch it includes all R501 features/fixes, so there is NO need to install R501 before installing R502;

Profit Suite R502.1 DMZ.exe – Used for L4 access. This patch is installed on a clean Windows Server node located in DMZ when there is no trust relationship between L4 and DMZ network. If Profit Suite R501.1 DMZ patch is already installed there's no need to install the R502 DMZ patch;



Profit Suite Documentation R502.1.exe – the R502 documentation patch, which should be installed on nodes where Profit Suite R500.1 has been installed;

Honeywell\_Intuition\_Core\_292.zip – Intuition Core software must be upgraded to IC292 for Profit Web Viewer R502 to support TLS 1.2. Note that this installation (that cannot be rolled back) is separate from the Profit Suite R502.1. **This IC292 MUST be installed on ALL nodes where R500.1 Profit Web Viewer has been installed BEFORE installing Profit Suite R502.1;**

In addition, there is a Profit Suite R502.1 Software Change Notice.pdf. Please note this SCN is under Latest Documentation and the four part Patch under Latest Downloads accessible by just searching on Profit Suite R502.

## **Profit Suite PS R442.1 Patch001**

The Profit Suite™ PS R442.1 Patch001 has been released and is available for download on Honeywell Process Solutions Support website <http://www.honeywellprocess.com>.

The patch addresses problems and offers improvements requested since the release of Profit Suite R442.1 as described in the patch SCN document available on the Support page of the Honeywell Process Solutions website, but specifically three main issues are addressed:

1. The previously selectively released PS R442.1 Profit Optimizer Patch001 is now included within this single R442.1 Patch001;
2. The previously selectively released PS R442.1 UOPCokConTkUpdate Patch001 is now included within this single R442.1 Patch001;
3. Following a review of the R501 PAR fixes 20 of them have now been re-applied and fixed in this R442 Patch001;

In conclusion, this PS R442.1 patch consolidates two previously selectively released R442 patches and with over 20 fixes from R501 allows customers to stay on R442 without a full R500 media release upgrade and retain ULM licensing if so desired.

Please Note: this patch is for and should be installed after Profit Suite R442.1 only, but it can be installed over the top of or instead of the Profit Optimizer or UOPCokConTkUpdate Patch001s.

The patch consists of two files (Patch and SCN):

PS R442.1 Patch001.exe – this is for Profit Suite R442 Server and Client installations.

Please note the SCN is under Latest Documentation and the Patch under Latest Downloads accessible by just searching on Profit Suite R442.

For more information on Profit Suite™ or to place a software order, please contact your Honeywell account manager or email:

### **HPS Technical Support Contact Information:**

- [apc.apptech@honeywell.com](mailto:apc.apptech@honeywell.com) for North and South America regions;
- [apc.support.emea@honeywell.com](mailto:apc.support.emea@honeywell.com) for Europe, Middle East and Africa and Asia Pacific regions;

## **TaijiPID R310.2 Patch is now available for download**

The Taiji™ PID R310.2 Patch fixes the following three historically long standing High Priority Product Anomaly Reports (PARs).

1-8XU2LA5 - When a PID loop is taken for Step Testing the preset SP test limits defaults to the SP Limits, this has now been resolved;

1-87RSMGI – Taiji tuning is incorrect, this has now been resolved;

1-7X3V3JB - Taiji browse for OPC tags does not provide the correct OPC tagname when importing data from OPC HDA, this has now been resolved;

In addition, although the PAR # 1-A68COZ1 - Unable to install Taiji Tuning Service in Windows Server 2016 operating system, which would require a full media release, has not been fixed, the workaround to achieve this has been documented in the Knowledge Article TAIJI:310:0022/19 – ‘How to install TaijiPID on Windows Server 2016 operating system’ available on the web portal.

The R310.2 Patch and the Software Change Notice are both available for download from the Honeywell Process Solutions Support Website (<http://www.honeywellprocess.com>).

For more information on Taiji™ and CPM™ or to place a software order, please contact your Honeywell account manager or email:

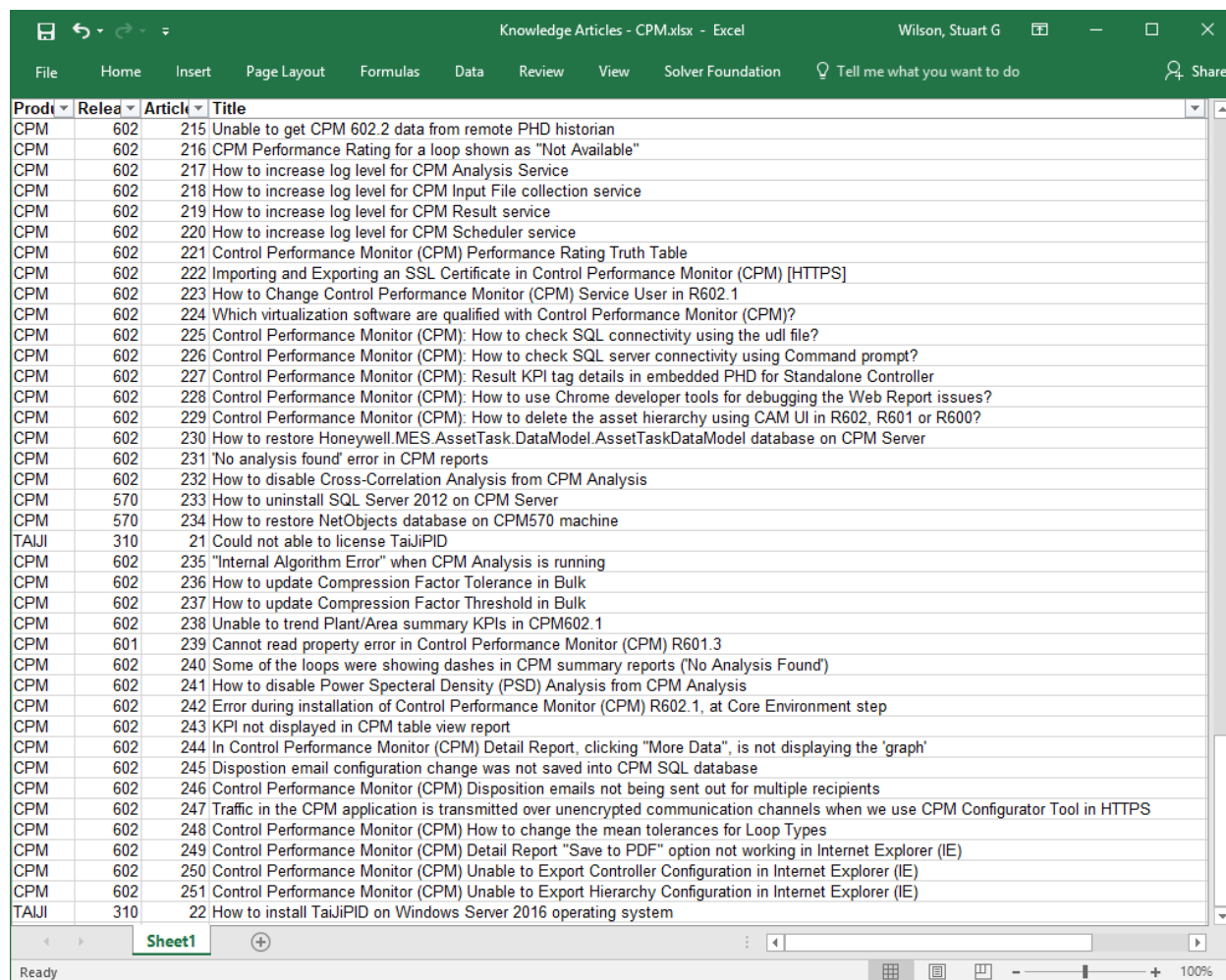
### **HPS Technical Support Contact Information:**

[cpm.support.emea@honeywell.com](mailto:cpm.support.emea@honeywell.com) for all global queries.

[Back Home](#)

## Control Performance Monitor (CPM) Knowledge Article Quarter: Summary of Articles – 4Q19 (to end December)

Please refer to the September 2018 BG Newsletter for all the details regarding this CPM Knowledge Article Quarter series and this quarter we publish the Summary of Articles for 3Q19 to date on the portal below:



Prod	Relea	Articl	Title
CPM	602	215	Unable to get CPM 602.2 data from remote PHD historian
CPM	602	216	CPM Performance Rating for a loop shown as "Not Available"
CPM	602	217	How to increase log level for CPM Analysis Service
CPM	602	218	How to increase log level for CPM Input File collection service
CPM	602	219	How to increase log level for CPM Result service
CPM	602	220	How to increase log level for CPM Scheduler service
CPM	602	221	Control Performance Monitor (CPM) Performance Rating Truth Table
CPM	602	222	Importing and Exporting an SSL Certificate in Control Performance Monitor (CPM) [HTTPS]
CPM	602	223	How to Change Control Performance Monitor (CPM) Service User in R602.1
CPM	602	224	Which virtualization software are qualified with Control Performance Monitor (CPM)?
CPM	602	225	Control Performance Monitor (CPM): How to check SQL connectivity using the udl file?
CPM	602	226	Control Performance Monitor (CPM): How to check SQL server connectivity using Command prompt?
CPM	602	227	Control Performance Monitor (CPM): Result KPI tag details in embedded PHD for Standalone Controller
CPM	602	228	Control Performance Monitor (CPM): How to use Chrome developer tools for debugging the Web Report issues?
CPM	602	229	Control Performance Monitor (CPM): How to delete the asset hierarchy using CAM UI in R602, R601 or R600?
CPM	602	230	How to restore Honeywell.MES.AssetTask.DataModel.AssetTaskDataModel database on CPM Server
CPM	602	231	'No analysis found' error in CPM reports
CPM	602	232	How to disable Cross-Correlation Analysis from CPM Analysis
CPM	570	233	How to uninstall SQL Server 2012 on CPM Server
CPM	570	234	How to restore NetObjects database on CPM570 machine
TAJI	310	21	Could not able to license TaijiPID
CPM	602	235	"Internal Algorithm Error" when CPM Analysis is running
CPM	602	236	How to update Compression Factor Tolerance in Bulk
CPM	602	237	How to update Compression Factor Threshold in Bulk
CPM	602	238	Unable to trend Plant/Area summary KPIs in CPM602.1
CPM	601	239	Cannot read property error in Control Performance Monitor (CPM) R601.3
CPM	602	240	Some of the loops were showing dashes in CPM summary reports ("No Analysis Found")
CPM	602	241	How to disable Power Spectral Density (PSD) Analysis from CPM Analysis
CPM	602	242	Error during installation of Control Performance Monitor (CPM) R602.1, at Core Environment step
CPM	602	243	KPI not displayed in CPM table view report
CPM	602	244	In Control Performance Monitor (CPM) Detail Report, clicking "More Data", is not displaying the 'graph'
CPM	602	245	Disposition email configuration change was not saved into CPM SQL database
CPM	602	246	Control Performance Monitor (CPM) Disposition emails not being sent out for multiple recipients
CPM	602	247	Traffic in the CPM application is transmitted over unencrypted communication channels when we use CPM Configurator Tool in HTTPS
CPM	602	248	Control Performance Monitor (CPM) How to change the mean tolerances for Loop Types
CPM	602	249	Control Performance Monitor (CPM) Detail Report "Save to PDF" option not working in Internet Explorer (IE)
CPM	602	250	Control Performance Monitor (CPM) Unable to Export Controller Configuration in Internet Explorer (IE)
CPM	602	251	Control Performance Monitor (CPM) Unable to Export Hierarchy Configuration in Internet Explorer (IE)
TAJI	310	22	How to install TaijiPID on Windows Server 2016 operating system

Final note on KAs is the above tables show only the public published articles, however on rare occasions there is a need to share internal/confidential KAs within Honeywell and these are not published publicly, although they also have Article ID numbers, which might account for gaps and apparent missing article numbers.

For more information on CPM™ please contact your Honeywell account manager or email:

### **HPS Technical Support Contact Information:**

[cpm.support.emea@honeywell.com](mailto:cpm.support.emea@honeywell.com) for all global queries.

[Back Home](#)

# Current Product Releases

## Advanced Applications:

### DynAMo Alarm Suite R202

- Metrics & Reporting
- Documentation & Enforcement
- Alerts & Notifications
- Process Safety Analyzer

### DynAMo Operations Suite R230

- Operations Management
- Operations Logbook
- Limit Repository

### UniSim

- UniSim Design R461.1
- UniSim Competency R461

### Business FLEX R250

- Ongoing support for Uniformance PHD 215, PHD 300, PHD 310 and PHD 320 as well as PI and other OPC HDA-compliant historians

### Profit Blending and Movement (PBM) Solution

#### Profit Blending and Movement (PBM) R500.1

- Blend Performance Monitor (BPM)
- Experion Blend Controller (EBC)
- Experion Tank Monitor (ETM)
- Profit Inventory Monitor (PIM)
- Profit Blend Controller (PBC)
- Profit Blend Optimizer (PBO)
- LIMS Viewer (LV)
- Profit Movement Management:
  - Movement Monitor (MM)
  - Movement Control (MC)

### Energy Dashboard R241

- Integrated suite to calculate and monitor actual and target energy use. May include Operations Monitoring, Profit Sensor Pro, UniSim Design, and Workcenter.

### Workcenter

#### Web-Based Visualization Analysis Solutions

- Workcenter Release 242

### Matrikon OPC

- Matrikon FLEX OPC UA SDK - R400.2
- Matrikon OPC UA Tunneller

### Profit Suite

- Release R442

### Uniformance

- Uniformance PHD 400
- Uniformance Process Studio R322
- Uniformance Asset Sentinel R511
- Uniformance Insight R210
- Uniformance Cloud Historian R122
- Uniformance Executive R310
- Uniformance KPI R121

### Symphonite Supply Chain and Production Management

- Production Manager Release 9.0
- Production Accounting and Reconciliation R210
- OptiVision R541

### Digital Suites for Oil and Gas

- DSOG R100 including Process Safety Suite, Production Surveillance Suite, Equipment Effectiveness Suite
- Production Surveillance Well Test R110

### Control Performance Monitor

- CPM CX R110
- CPM Standard R602.1
- Taiji PID R310

### Honeywell Pulse

- Release R110

[Back Home](#)

# Contact Information

## Americas Support Centre Contact Information

Advanced Alarm Management (DynAMo/AAM Suite)	<a href="mailto:opsHelp@honeywell.com">opsHelp@honeywell.com</a>	800-822-7673
Advanced Planning and Scheduling (APS)	<a href="mailto:support@honeywell.com">support@honeywell.com</a>	+403-216-2870
Blending & Movements (PBM/OM&S) Support	<a href="mailto:rac.support@honeywell.com">rac.support@honeywell.com</a>	+1-289-333-1500
OptiVision Help Desk	<a href="mailto:optihelpgroup@honeywell.com">optihelpgroup@honeywell.com</a>	+1-513-595-8944
Profit Suite Support	<a href="mailto:apc.apptech@honeywell.com">apc.apptech@honeywell.com</a>	1-800-822-7673
Technical Assistance Centre (TAC) – Americas		1-800-822-7673
Uniformance Help Desk	<a href="mailto:support@honeywell.com">support@honeywell.com</a>	+1-403-216-2870
UniSim Design Suite Support	<a href="mailto:Unisim.Support@honeywell.com">Unisim.Support@honeywell.com</a>	1-800-822-7673
UniSim Competency Suite Support	<a href="mailto:hpscusersupport@honeywell.com">hpscusersupport@honeywell.com</a>	1-800-822-7673

## Asia Pacific (AP) Technical Assistance Centre (TAC) for Advanced Solutions contacts

Advanced Process Control Support	<a href="mailto:apc.support.ap@honeywell.com">apc.support.ap@honeywell.com</a>	
Manufacturing Execution Solutions (Includes APS, BMA, MES, OMP, AAM and Uniformance PHD)	<a href="mailto:bflex.support.ap@honeywell.com">bflex.support.ap@honeywell.com</a>	
OptiVision Help Desk	<a href="mailto:p3its_onscall@honeywell.com">p3its_onscall@honeywell.com</a>	+ 358 20752 2300
Profit Blending and Movement (PBM) Solutions Support	<a href="mailto:bma.support.ap@honeywell.com">bma.support.ap@honeywell.com</a>	
UniSim Support	<a href="mailto:unisim.support@honeywell.com">unisim.support@honeywell.com</a>	
UniSim Competency Suite Support	<a href="mailto:hpscusersupport@honeywell.com">hpscusersupport@honeywell.com</a>	

## Honeywell Asia Pacific regional GCCC hotlines:

Australia	<a href="mailto:GCCC.Pacific.HPS@Honeywell.com">GCCC.Pacific.HPS@Honeywell.com</a>	1 300 301 135
China:	400-820-0386	800-820-0237
India:		1-800 2335051
Indonesia:		0018-03-440-212
Malaysia:		1 800-812-674
New Zealand:		0800 855 663
Pacific (outside Australia and New Zealand):		+65 6787 1788
Philippines:		1-800-1441-0223
Singapore:		6823-2215
Taiwan:		0800-666-051
Thailand:		0018-004-415-283

## Europe and Middle East and Africa, (EMEA) Technical Assistance Centre (TAC) for Advanced Solutions contacts

Control Performance Monitor (CPM)	<a href="mailto:CPM.support.emea@honeywell.com">CPM.support.emea@honeywell.com</a>	
Alarm Management (DynAMo/AAM)	<a href="mailto:DynAMo.support.emea@honeywell.com">DynAMo.support.emea@honeywell.com</a>	
OptiVision Help Desk	<a href="mailto:p3its_onscall@honeywell.com">p3its_onscall@honeywell.com</a>	+ 358 17 57 89 300

<b>EMEA Advanced Solutions Helpline</b>		+32 (0)2 728 2200
Advanced Process Control& Optimization	<a href="mailto:apc.support.emea@honeywell.com">apc.support.emea@honeywell.com</a>	
MES BusinessFlex	<a href="mailto:mes.support.emea@honeywell.com">mes.support.emea@honeywell.com</a>	
Production Control Centre	<a href="mailto:kunde@honeywell.com">kunde@honeywell.com</a>	+47 6676 2180
Profit Blending and Movement (PBM)	<a href="mailto:bma.support.emea@honeywell.com">bma.support.emea@honeywell.com</a>	
UniSim Competency Suite Support	<a href="mailto:hpscusersupport@honeywell.com">hpscusersupport@honeywell.com</a>	
UniSim Support	<a href="mailto:unisim.support@honeywell.com">unisim.support@honeywell.com</a>	
<b>Automation College</b>	<a href="http://www.automationcollege.com">www.automationcollege.com</a>	

For questions, comments or archived copies of the Guardian newsletter, please contact Sandhya Karnam at [Sandhya.karnam@honeywell.com](mailto:Sandhya.karnam@honeywell.com).

### Honeywell Process Solutions

1250 West Sam Houston Parkway South  
Houston, TX 77042

Honeywell Control Systems Ltd, Honeywell House Skimped Hill Lane Bracknell RG12 1EB

555 Huanke Road, Zhangjiang Hi-Tech Park, Shanghai, China 201203

[www.honeywell.com/ps](http://www.honeywell.com/ps)

[Back Home](#)