

BENEFITS
GUARDIANSHIP
NEWSLETTER

QUARTERLY NEWS / Q1

Welcome to the quarterly Benefits Guardianship e-Newsletter.
Here you will find the latest product updates, new release information, industry news and Honeywell Connected Industrials solution articles.

This issue includes information on:

- Be Aware ADVISORY BW 2025-02: PHD R430 Broken CPU Affinity.
- Honeywell Inspection Rounds: Configuring Shift Models in EasyConfig
- Honeywell Blend Optimizer KPIs
- Honeywell Workforce Competency ProSim Bridge Adapter
- UniSim Design Suite R510 release available
- Honeywell APC R520 release available from third quarter
- Honeywell Alarm Management: Reporting R2.3.0 release available
- Honeywell Operations Management – Knowledge Article Quarter: Summary of Articles – 2025
- List of Knowledge Articles published to Process.Honeywell.com

If you have any questions or comments, don't hesitate to contact us:

GlobalBGPDeliveryCentre@honeywell.com



ENTERPRISE DATA MANAGEMENT

- Be Aware ADVISORY BW 2025-02: PHD R430 Broken CPU Affinity

[READ ENTERPRISE DATA MANAGEMENT ARTICLES](#)



HONEYWELL BLENDING AND MOVEMENT

- Blend Optimizer KPIs

[READ BLENDING AND MOVEMENT ARTICLES](#)



UNISIM® DESIGN SUITE

- UniSim Design Suite R510 release available

[READ UNISIM DESIGN ARTICLES](#)



HONEYWELL ALARM MANAGEMENT

- HAM Reporting R2.3.0

[READ ALARM MANAGEMENT ARTICLES](#)



HONEYWELL INSPECTION ROUNDS

- Configuring Shift Models in EasyConfig

[READ INSPECTION ROUNDS ARTICLES](#)



HONEYWELL WORKFORCE COMPETENCY

- ProSim Bridge Adapter Now Supports Experion SCADA & SIM-SM Adapters

[READ WORKFORCE COMPETENCY ARTICLES](#)



HONEYWELL APC

- Honeywell APC R520 product discontinued: PSOS Web Server, Profit Expert, Profit XL and APC HMIWeb Library

[READ HONEYWELL APC ARTICLES](#)



HONEYWELL OPERATIONS MANAGEMENT

- Knowledge Article: Summary of Articles – 2025

[READ OPERATIONS MANAGEMENT ARTICLES](#)



If you received this Honeywell notification from an associate and would like to receive your own copy, [please subscribe](#) > Get the latest news in your inbox!

Training Classes

Find upcoming training to improve your knowledge.

[SAVE YOUR SPOT](#)

Online Support

- [Create a Support Request](#) online.
- [Monitor](#) your Support Request
- Visit the [Customer Support](#) page.



[> Try the Knowledge Base <](#)

[UPCOMING PRODUCT RELEASES | CONTACT](#)

Enterprise Data Management

Be Aware ADVISORY BW 2025-02: PHD R430 Broken CPU Affinity.

AFFECTED CUSTOMERS:

Customers using PHD release R430.1 on relatively large systems that have a high RDI count, and/or have a client load which results in a burst of concurrent connections.

ANOMALY SUMMARY

Microsoft made changes to CPU thread affinity behavior in Windows between Windows Server 2016, Windows Server 2019 and Windows Server 2022. Code changes in PHD R430.1 to attempt to handle these changes can cause additional overheads and high CPU usage on larger PHD systems during thread creation.

POTENTIAL CUSTOMER OBSERVABLE SYMPTOMS:

- Unexpectedly high CPU usage when:
 - all RDIs are started
 - a burst of concurrent connections to PHD is being made (by CHC, UI and other products that use a pool of connections)
- Slowness in query responses
- Slowness in all operations in an RDP session to the PHD server itself

PROBABILITY OF OCCURRENCE:

- Very low on smaller PHD systems with lower RDI counts and lower client load.
- Some chance of occurrence on medium-sized systems, depending on client load profile.
- Much higher chance of occurrence on larger systems with a large RDI count, and with a client load which results in a burst of concurrent connections.
- Use of RDC will increase the chance of occurrence.

For Further Documentation:

PHD patch release R430.1.2 resolves the mentioned issue. The official release of this patch is schedule for end of Q1 2025 however for affected customers GTAC will provide an early release version.

Before considering installation of the beta version of the patch:

- Ensure hardware resources are appropriately sized for the PHD system size
- Ensure anti-virus and related products have been configured with appropriate exclusions
- If PHD is running on VMware, ensure VMware tuning has been applied

If the described observable symptoms still occur, then contact GTAC to request a beta version of the patch.

Disclaimer:

CUSTOMER'S FAILURE TO IMPLEMENT THE RECOMMENDED UPDATES OR ACTIONS, INCLUDING WITHOUT LIMITATION, RECOMMENDED PATCHES OR UPDATES TO ANY SOFTWARE OR DEVICE, SHALL BE AT CUSTOMER'S SOLE RISK AND EXPENSE. CUSTOMER SHALL TAKE ALL APPROPRIATE ACTIONS TO SECURE AND SAFEGUARD ITS SYSTEMS AND DATA. HONEYWELL SHALL HAVE NO LIABILITY FOR (I) CUSTOMER'S FAILURE TO IMPLEMENT THE RECOMMENDED UPDATES OR ACTIONS OR (II) CUSTOMER'S FAILURE TO SECURE AND SAFEGUARD ITS SYSTEMS AND DATA. SUCH FAILURES CAN VOID HONEYWELL'S WARRANTY OBLIGATIONS.

Approved by the Field Action Committee & Issued by Global TAC

[Back Home](#)

Honeywell Inspection Rounds (HIR)

The Shift model defines the duration and pattern of the work shifts in an organization. For example, a “12hr- 12hr” shift model contains two shifts of duration. After the second shift is completed, the first shift starts, and the cycle repeats continuously.

However, during special occasions such as Ramadan, the shift model may include three shifts – a 6-hour- day shift and 6-hour- evening shift and 12-hour-long night shift. During such times, we can enable the Shift Model feature in EasyConfig and select the required shift model from the list of configured models.

Configuring Shift Models in EasyConfig

In EasyConfig, the above scenario is configured by creating a Default Shift and Ramadan Shift Model to it as follows:

- Shift Model 1 of duration 12h-12h (Default shift)
- Shift Model 2 of duration 6h-6h-12h (Ramadan shift)

NOTE

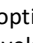
By default, the Inspection Rounds application considers the Used working time setting that are configured in the Planning board.

Preconditions

Need explicit permission (EC Admin) to perform these actions. Contact the Honeywell support team to obtain the required user role.

Procedure

Perform the following steps to setup the shift model in EasyConfig:

1. Navigate to EasyConfig
2. On the left, Choose the configuration  option. You see the Levels Hierarchy tree on the left.
3. To configure the shift model for all the levels, click the Enterprise node (root node) in the Levels hierarchy tree on the left.
OR
To configure the Shift model for a specific level only, select that level from the tree. You see the Configuration screen on the right. Expand Shift Model and turn on the toggle button to activate the shift model feature from EC. Otherwise by default system will take Planning board shift model. Notification indicates if your changes are successfully saved.

NOTE

If the shift model feature is disabled at the enterprise level, then we cannot enable it for a specific level.

4. Select Add Shift Model and enter the name of the shift. If you would like to set this regular shift as the default for all days, click on the “Set as Default” option. (Note that only a regular shift can be designated as the default, and it does not require a start date or end date.)
5. For specific shifts, such as the Ramadan shift, which are designated for a particular period, it is essential to provide both the start date and end date. It is advisable to include the exact start time for the shift on the first day and the last shift time for the final day. After that, click SAVE. The shift model will be created and will appear in the “Available Shift Models” section.

Shift Model

×

Name

Default

☒ Set as Default

Start Date (UTC)

MM-DD-YYYY

HH:MM (-5:00 UTC)

End Date (UTC)

MM-DD-YYYY

HH:MM (-5:00 UTC)

CANCEL

SAVE

Shift Model

×

Name

Ramadan

☐ Set as Default

Start Date (UTC)

03-17-2025

08:30


End Date (UTC)

04-01-2025

08:30

CANCEL

SAVE

6. To plan the shift, choose Create New. A Shift plan model popup screen appears.
7. Enter the required values for Key, Starting Hour, Starting Minute, Duration, and Working Days. It is important to ensure that the entire shift plan covers a full 24-hour period. Even if the industry operates on a 12-hour shift plan, we must still account for 24 hours and select the "Disable Scheduling" option in the shift plan model.
8. Choose Save to confirm the setting.
9. To add an additional shift plan in the same model, choose + Add Shift Plan and follow step-7.
10. To edit or delete a Shift plan, choose  next to the shift plan and select Edit or Delete respectively from the drop-down list.

Your changes take effect immediately.

Note : All times are in UTC

+ Add Shift Model			
SHIFT MODEL ▾	START DATE (UTC) ▾	END DATE (UTC) ▾	...
Default			...
Ramadan	03-17-2025, 08:30	04-01-2025, 08:30	...

Available Shift Models

[Add Shift Model](#)

Default Default



+ Add Shift Plan				
KEY ▾	STARTING HOUR (UTC) ▾	STARTING MINUTE (UTC) ▾	DURATION (MIN) ▾	WORKING DAYS ▾
DAY SHIFT	03	00	720	Sun, Mon, Tue, Wed, Thu, Fri, Sat
NIGHT SHIFT	15	00	720	Sun, Mon, Tue, Wed, Thu, Fri, Sat

Ramadan



+ Add Shift Plan				
KEY ▾	STARTING HOUR (UTC) ▾	STARTING MINUTE (UTC) ▾	DURATION (MIN) ▾	WORKING DAYS ▾
DAY SHIFT	03	00	360	Sun, Mon, Tue, Wed, Thu, Fri, Sat
EVENING SHIFT	09	00	360	Sun, Mon, Tue, Wed, Thu, Fri, Sat
NIGHT SHIFT	15	00	720	Sun, Mon, Tue, Wed, Thu, Fri, Sat

[Back Home](#)

HIR SaaS Updates details

The most recent version update is Honeywell Inspection Round R8.4.6. Below are the details of the update.

Honeywell Inspection Rounds R8.4.6 update

[MOVOR-19530] - ND : Bug fixes

[MOVOR-19328] - Movelets : Map view is not working in ART

[MOVOR-19361] - Recommendations tile should be aligned correctly to see the priority & type correctly at the bottom

[MOVOR-19374] - Dashboard : Filter not working as expected when navigating to third page from incidents pie chart

[MOVOR-19671] - Easyconfig - User should be taken to page number 1 by default in Round Results page

[MOVOR-19585] - EasyConfig Bug Fixes

[MOVOR-19590] - Started rounds in Edit rounds screen issues

[MOVOR-19554] - Issue page missed entry to be deleted when the round started in online mode and completed in offline mode, later synced

[MOVOR-19704] - Mobile - Readings, Comments, Observation are vanished when user Redoes the round

[MOVOR-19602] - 500 Internal server error when navigating to second depth ND page

[MOVOR-19574] - ND api: Missing security header in https response

[MOVOR-19573] - Missing security headers in https response

[MOVOR-19702] - Easyconfig - Round Result Page keeps on loading even though round results are existing

[MOVOR-19691] - Easyconfig - Page Keeps on loading when user clicks on Load Attributes button in the Assets page

[MOVOR-19690] - Easyconfig - Export level is failing with error SEVERE: (TypeError) : Cannot read properties of undefined (reading 'map_0')

[MOVOR-19689] - Easyconfig - Type and Value fields are optional during extending the task but currently shows as mandatory

[MOVOR-19715] - Missing Secure and HTTPOnly Flags for Cookies for cookies

[MOVOR-19692] - Mobile : Issue with asset has no task

[MOVOR-19708] - Easyconfig - User is not able to edit and submit this Asset

[MOVOR-17719] - Security Risk: Twistlock - Third party container image for gridgain contains issues

[MOVOR-17699] - Security Risk: BDH - Spring Framework

[MOVOR-19147] - Security Risk: PSIRT - Envoy Proxy - HTTP/2 Continuation frames can be utilized for DoS attacks

[MOVOR-19312] - EasyConfig (Acelen/Inovyn) : Filters are getting reset after approval of rounds in Round Approval Page

[MOVOR-19455] - Fix Twistlock and BDH issues in ND API, ND Common and Write API

[MOVOR-19454] - Upgrade latest GridGain and deploy in OR

[MOVOR-19610] - Upgrade GridGain R8.9.9, check security reports and validate ND

[MOVOR-19519] - adjust get userInfo for ADFS non-standard behaviour

[MOVOR-19521] - EasyConfig : Download Errors button needs to be enabled for errors <=5

[MOVOR-19510] - EasyConfig : Add limit type and deviated limit value to the Task table in the Asset details page of Round result (show in red)

[MOVOR-19314] - security remediation for media, hfir-rest, service-event components

[MOVOR-19408] - MAF : Adjust the deletion DCs based on index

[MOVOR-19551] - MAF : Add an index based on scheduled start time for both round result and missed

[MOVOR-19513] - MAF : Delete MAF index after MD deletion

[MOVOR-19540] - Round when started in offline mode and later synced in online mode shows the status as Inprogress in Round Result section

[MOVOR-19619] - MAF: Use the new index of scheduled start time for fetching the issues during cleanup job

[MOVOR-19577] - Movelets : Add reExecuted flag inside attached properties

[MOVOR-19608] - MAF: Resolve compatibility issues due to changes of MAF Server Framework

[MOVOR-19647] - MAF : Adjust missed scheduler not to set missed for re-executed rounds

[MOVOR-19488] - MAF: Script to trigger Task Deviations for R7 & R8

[MOVOR-19642] - Create consolidated Connector build (binaries, reports) from R8.4.1 to R8.4.6.

[MOVOR-19643] - Create consolidated SQL scripts from R8 to R8.4.6

[MOVOR-19649] - Check and include exception handling for SQL Script execution in Connector installer

[MOVOR-19458] - ND API: API to get all tasks deviation details irrespective of limit criticality, limit type or the drill down filters

[MOVOR-19611] - Connector: Include issue id for rounds to have hyperlink to Approval workflow

[MOVOR-19612] - ND API: Make query changes to get issue id for rounds and validate

[MOVOR-19552] - HFIR-REST: Adjust Issue listBy category API

[MOVOR-19578] - HFIR-REST: Update the APIs error message header and handle the duplicate Users error message

[MOVOR-19451] - Dashboard : PART-4 - Field operation should be able to view the all tasks deviation details at one go irrespective limit Criticality and Type

[MOVOR-19453] - Dashboard : Navigation Label name on the top of the page to be changed from "Asset -> Deviation" to "Assets with "Critical/Medium/Low" Task Deviation"

[MOVOR-19452] - Dashboard : Top 10 count by rank KPI && DATA With level separate by category KPIs placement to be swapped to accommodate more details.

[MOVOR-19339] - ND : Display the bar chart for re-executed rounds when qty is 0

[MOVOR-19587] - EasyConfig : Consume the new listBy api to display the list of issues based on issue category

[MOVOR-19525] - EasyConfig : Enhancements in round result

[MOVOR-19485] - Create ND installer

[MOVOR-19486] - Validate ND installer

[MOVOR-19462] - Generate R8.4.6 consolidated build and validate

[MOVOR-19614] - Create R8.4.6 Connector installer and validate the migration scenario

[MOVOR-19615] - Create R8.4.6 ND installer and validate

[MOVOR-19405] - create MAF index to prevent unnecessary DC generation when cleanup issues

[MOVOR-19509] - EasyConfig : Deviation comment to be made visible in deviation tab (currently only in asset details page visible)

[MOVOR-19365] - Dashboard : PART-1 - Field operation should be able to view the all tasks deviation details at one go irrespective limit Criticality and Type

[MOVOR-19449] - Dashboard : PART-2 - Field operation should be able to view the all tasks deviation details at one go irrespective limit Criticality and Type

[MOVOR-19450] - Dashboard : PART-3 - Field operation should be able to view the all tasks deviation details at one go irrespective limit Criticality and Type

[MOVOR-19586] - EasyConfig/ND : Regenerate security scan reports (BDH, Twistlock, Coverity)

[MOVOR-19533] - Security vulnerability fixes for oidc-auth, logout and tokenx

[MOVOR-19621] - HFIR-REST: Migrate Issues entity to create new indices

[MOVOR-19638] - QA Testing Tasks + Any Bug Fixes

[MOVOR-19504] - EasyConfig/ND : Security Scan fixes and reports (BDH, Twistlock, Coverity)

[MOVOR-19499] - Security vulnerability fixes for auth service

[MOVOR-19404] - security remediation for portal/portal-sdk

[MOVOR-19403] - security remediation minio/nginx-unprivileged/redis

[MOVOR-19402] - Security remediation for event consumer dispatcher

Article submitted by –Abirami Chidambaram, HCI Technical Support – Honeywell Inspection Rounds.

[Back Home](#)

Honeywell Blending and Movement

Blend Optimizer KPIs

A new feature in Honeywell Blending & Movement (HBM) R530 is the calculation of key system health KPIs for Blend Optimizer. These KPIs can be collected by Honeywell's Embedded Services functions for subsequent reporting and analysis.

A DSS Server called DssKpi has been implemented to calculate the KPIs listed below:

- Last optimization cycle
- Cycle when the health of at least one analyzer for the specified blender becomes good
- Count of "On_control" cycles
- Count of "SolutionFound" cycles
- Count of "OnSpec" cycles
- Percentage of Count of "On_control" cycles (calculated as $100 * \text{OnCtrlCount} / (\text{General.Cycle Count} + 1 - \text{StartTrackingCycleNumber})$)
- Percentage of Count of "OnSpec" cycles (calculated as $100 * \text{OnSpecCount} / (\text{General.Cycle Count} + 1 - \text{StartTrackingCycleNumber})$)
- Percentage of Count of "SolutionFound" cycles (calculated as $100 * \text{SolutionCount} / (\text{General.Cycle Count} + 1 - \text{StartTrackingCycleNumber})$)
- Count of "Good Analyzer PV" cycles
- Percentage of Count of "Good Analyzer PV" cycles (calculated as $100 * \text{GoodAnalyzerPVCount} / (\text{General.Cycle Count} + 1 - \text{StartTrackingCycleNumber})$)

For more information on Honeywell Blending and Movement (HBM), Blend Optimizer, or the new BO KPIs, please contact your Honeywell Account Manager or your local Application Support office.

Application Support Contact Information:

The Americas: rac.support@honeywell.com

Europe, Middle East and Africa: bma.support.emea@honeywell.com

Asia Pacific: bflex.support.ap@honeywell.com

Any descriptions of future product direction intended updates, or new or improved features or functions are intended for informational purposes only and are not binding commitments on us; the sale, development, release or timing of any such products, updates, features or functions is at our sole discretion.

[Back Home](#)

Honeywell Workforce Competency:

Honeywell Process Training Simulator (PTS) is part of the comprehensive Honeywell Workforce Competency, which helps better train today's industrial workforce.

Process Training Simulator (PTS):

Process Training Simulator is a state-of-the-art dynamic process simulator specifically designed for the process industry. It provides comprehensive simulation features like process design; operating strategy development; process troubleshooting; regulatory control testing; and personnel training.

ProSim Bridge Adapter Now Supports Experion SCADA & SIM-SM Adapters

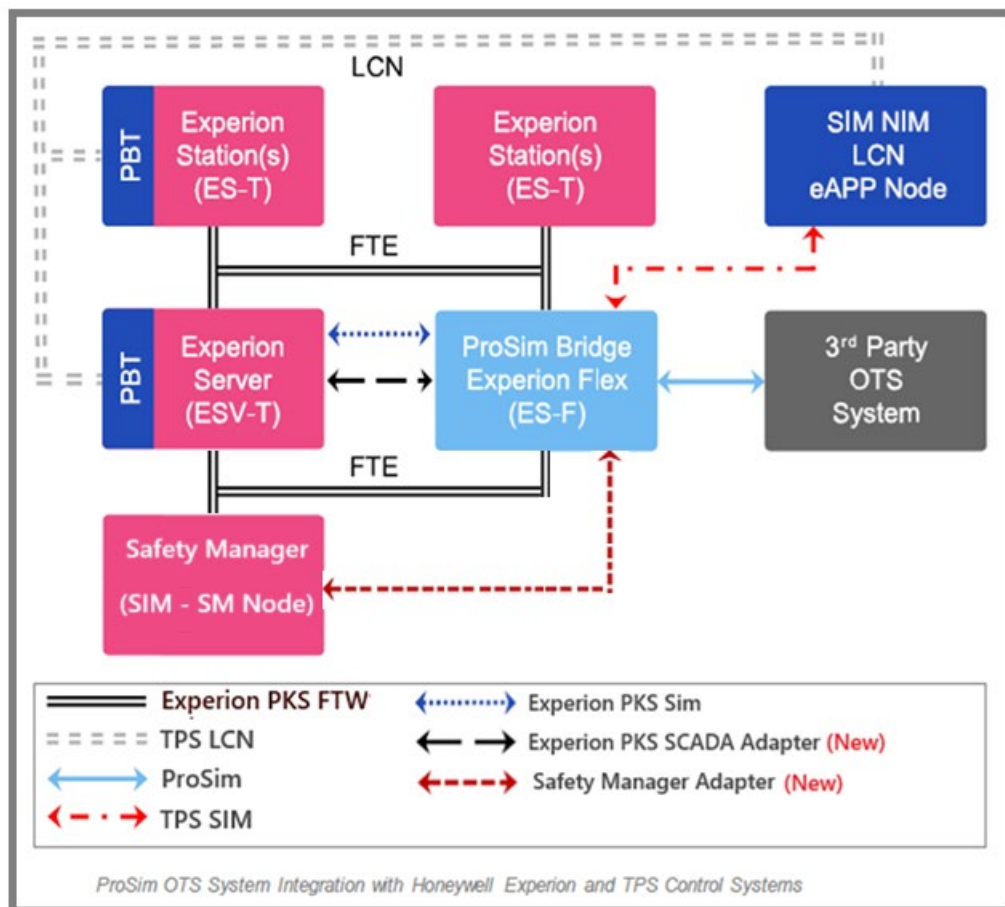
ProSim Bridge Adapter

Honeywell ProSim Bridge is used by OTS vendor simulation solution providers to integrate their training simulation models with Honeywell Experion and/or TPS control system components for console Operator Training. It includes a fully supported base software platform, Experion interfaces, third-party interface, and productivity toolkits for TPS/SM/SCADA simulation.

ProSim Bridge Adapter is a lightweight COM-based link between the Process Training Simulator platform and an external simulation system. It facilitates control, automation, and safety system simulation, as well as connectivity for third-party Process Training Simulators. It provides high-fidelity training experience using the Honeywell Operating Console.

The platform supports features such as Freeze, Unfreeze, Initial conditions, Backtracks, Snapshot Save, and Restore. It supports integration via the TPS Local Control Network (LCN) and/or the Experion Fault Tolerant Ethernet (FTE).

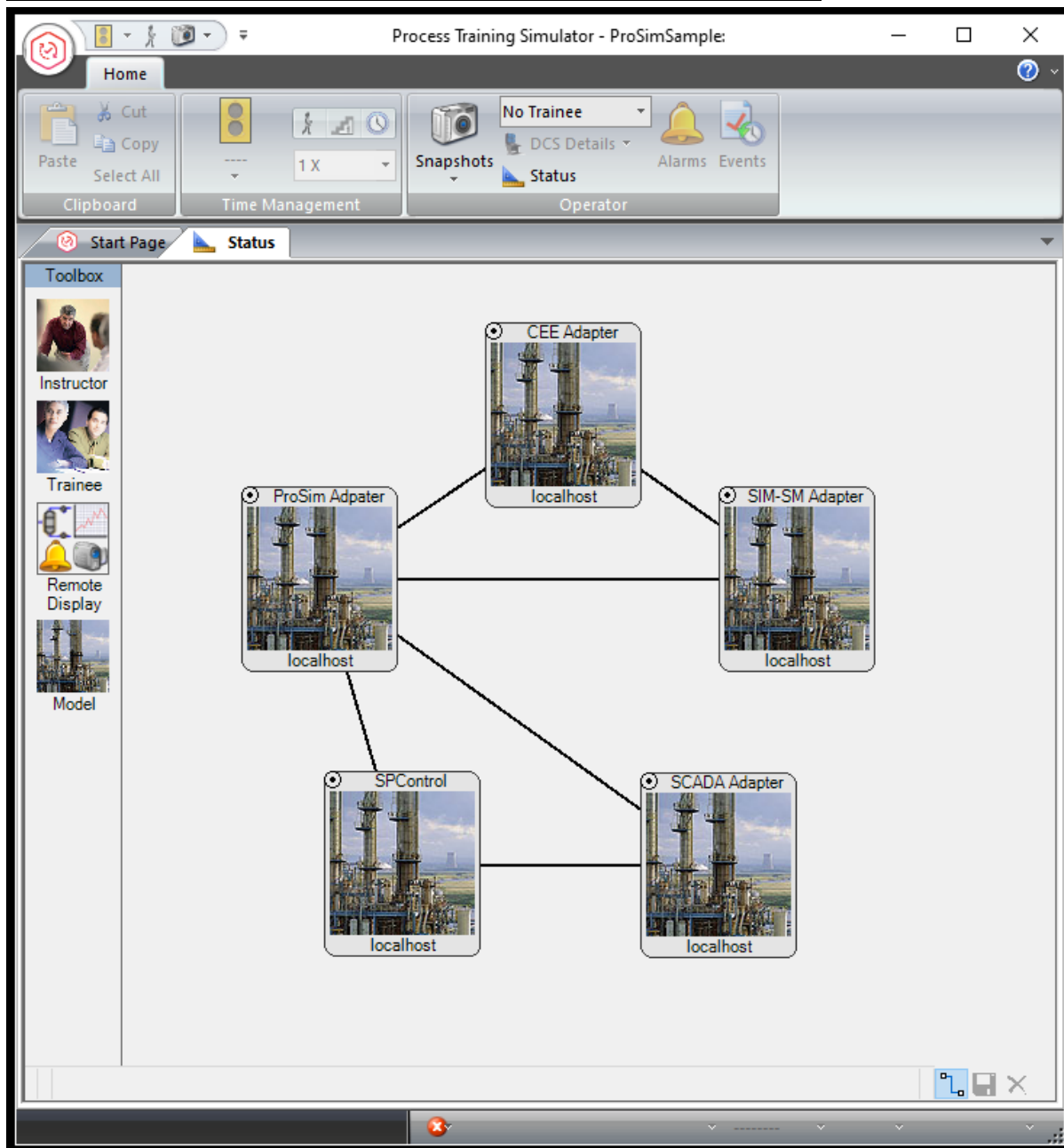
Before the release of the Workforce Competency Version R530.2, the ProSim Bridge Adapter supported EPKS and TPS simulations and SM and SCADA emulations. From R530.2 onwards, it now supports SIM-SM and SCADA Adapters as shown in the block diagram below.



With the ProSim Bridge Enhancement, the SIM-SM and SCADA Adapters may now replace the SM and SCADA emulations, enabling the capabilities of adapters. Here are the key benefits of this enhancement:

- **No Reconfiguration Needed:** Users can now make changes related to SIM-SM or SCADA without needing to reconfigure the SPControl model. This saves time and reduces potential errors during the update process.
- **Centralized Information Source:** The Experion server serves as a single source for all translated points. This streamlines data management and ensures consistency across the system.
- **Flexible Point Management:** It is now much easier to add or remove SCADA and SM points. This flexibility allows for quicker adaptations to user needs or changes in system requirements.
- **Improved Engineering User Interface:** The user interface for the SCADA and SM adapters has been enhanced, making it more intuitive and user-friendly for engineers.
- **Seamless Integration with Engineering Studio:** The Experion SCADA and SM Adapters are fully integrated with Engineering Studio, which simplifies tasks related to model generation.

[Back Home](#)



[Back Home](#)

Updates available

Honeywell Workforce Competency R530 update

The latest update for Workforce Competency R530 is 530.2.1.0 (released on March 11th, 2025)

2/27/2025 HCPP-29478	Fix for TPS LOGIC block LOENBL with FL1 stuck.
2/27/2025 HCPP-29309	Fixed error in CL toolkit translation by adding logic for "when error" clauses in CL wait statements
2/27/2025 HCPP-27160	If R521.3 installed on PTS and the Yokogawa machines, It throws unwanted alarms and trips (Rebuilt)
2/27/2025 HCPP-29602	Implementation of PRD mode for Yokogawa PID controllers in Master-Slave configuration in OTS
10/2/2025 HCPP-29611	CS3000: IOP is not getting triggered in PID controller
10/2/2025 HCPP-29316	DSMDLL compilation of CS3000 DCS translated output throws errors for CALCU and LC64 blocks
10/2/2025 HCPP-29572	CS3000 translation failed by toolkit in PTS R530
3/02/2025 HCPP-29567	The PTS is creating SNST snapshot and exercise goes freeze though the auto save session state option is disabled in Workforce Competency.
3/02/2025 HCPP-27379	PTS Snapshot does not retain controller modes in CS3000 emulated layer
3/02/2025 HCPP-27338	FUNC-VAR block is not working as intended, Calculated PV (CPV) is not correct
3/02/2025 HCPP-29391	SIO-11 block logic is not working as intended
3/02/2025 HCPP-29362	SM Emulation: The Safety Manager First Out Alarm logic using ANN Type blocks not working in PTS
3/02/2025 HCPP-29390	SIM-SM Adapter and SCADA Adapter availability with ProSim bridge Solution
3/02/2025 HCPP-28944	GE Mark Vie controller version i.e., 06.08.00C Qualification
3/02/2025 HCPP-29388	Enable alarm parameters R/W for FBControlOp
3/02/2025 HCPP-29389	PTS App option to avoid dialog on model close
3/02/2025 HCPP-29226	IFS multi-OTS
1/16/2025 HCPP-29273	Fix for TPS Ratio block to include overall bias in output calculation
1/16/2025 HCPP-29272	Fix for TPS OrSel block CVEUHI/LO parameter should track XEUHI/LO and not downstream SPEUHI/LO.
1/16/2025 HCPP-26222	Save Location for Saving Event is not kept in the specified path when event is modified
1/16/2025 HCPP-29330	Unable to change the role of another domain user in user manager
1/16/2025 HCPP-28899	CEE Adapter: Communication fails from CeeAdapter to EPKS Input blocks with "CDA Error Message: %s: Change Not Permitted
1/16/2025 HCPP-28838	The Cee Adapter Model communication fails with an Error "Problem with SyncWrite of AI's to EPKS server
1/16/2025 HCPP-29400	The SIM SM Adapter snapshot files should be included in the Export Snapshot feature in PTS.
1/16/2025 HCPP-29146	The Cee Adapter Model communication fails with an Error "Problem with SyncWrite of AI's to EPKS server"
1/16/2025 HCPP-28923	BCAS mode related to SIM2 gcb, Shape(s) and Faceplate(s) in WFC R521.4
1/16/2025 HCPP-28736	Generic framework adapter does not read the DCS values after loading snapshot
1/16/2025 HCPP-28645	RQUP-04554271 CS3000 Toolkit: network card I/O to be supported
1/16/2025 HCPP-27763	CPV tracking downstream Value disabled when OTRK=low
1/16/2025 HCPP-27419	Rockwell API thread startup logic that can result in thread hangs which freezes the RLogixSimServer
1/16/2025 HCPP-27378	TRB: DeltaV Toolkit is not processing double quotations correctly; therefore, it continues to read in the entire file causing an out of memory error.
1/16/2025 HCPP-27351	PIDALL_CCS block is ramping its PV to SH value when it is changed from MAN to AUT mode
1/16/2025 HCPP-26679	Exatit synchronization message when a snapshot takes long to load.
1/16/2025 HCPP-29305	SM Emulation: The Safety Manager First Out Alarm logic using ANN Type blocks not working in PTS
1/16/2025 HCPP-27758	TRB: CCC adapter is not writing the StepSize parameter on the CCC Emulator
1/16/2025 HCPP-27372	TRB: DeltaV Step timing out too soon.

Honeywell Workforce Competency R521 update

The latest update for Workforce Competency R521 is R521.5.1.0 (released on September 9th, 2024)

02/08/24 HCPP-28645	DE: CS3000 Toolkit: network card I/O to be supported
05/08/24 HCPP-28381	PTS speed reported is less than minimum speed in this case of SIMIT Adapter (refer 2x Speed)
05/08/24 HCPP-28382	When launched the Model without Starting the SIMIT OPC didn't notice any Error reporting Time Out of the SIMIT OPC
05/08/28 HCPP-28590	Reset tag which is set to HIGH before saving the snapshot is coming back to LOW after reloading the snapshot
06/08/24 HCPP-28923	BCAS mode related to SIM2 gcb, Shape(s) and Faceplate(s) in WFC R521.4
09/08/24 HCPP-27963	TRB: BW-63870: R521.3.0 Yokogawa Server Connection Failing Between PTS for R521.3.0 Yokogawa Server
19/08/24 HCPP-28736	Generic framework adapter does not read the DCS values after loading snapshot
19/08/24 HCPP-28899	CEE Adapter: Communication fails from CeeAdapter to EPKS Input blocks with "CDA Error Message: %s: Change Not Permitted"
04/09/24 HCPP-28838	PTS: The Cee Adapter Model communication fails with an Error "Problem with SyncWrite of AI's to EPKS server"

Honeywell Workforce Competency R520 update

The latest update for Workforce Competency R520 is 520.3.3.0 (released on February 7th, 2025)

01/09/25 HCPP-29330	Unable to change the role of another domain user in user manager
09/20/24 HCPP-28838	The Cee Adapter Model communication fails with an Error "Problem with SyncWrite of AI's to EPKS server"
09/20/24 HCPP-28899	CEE Adapter: Communication fails from CeeAdapter to EPKS Input blocks with "CDA Error Message: %s: Change Not Permitted"
09/20/24 HCPP-26875	SM CDA points in alarm do not show in the Station's alarm display.

Article submitted by – Anne Colençon, HCI Technical Support – Workforce Competency.

[Back Home](#)

UniSim® Design Suite

UniSim Design – R510 Is Released

UniSim Design Suite R510 was released January 2025.

UniSim Design R510 brings forth new sustainability features as well as enhancements specifically designed for our valued existing customers in the upstream oil and gas sector, other hydrocarbon industries, and the fields of engineering, procurement, and construction (EPC).

The UniSim Design R510 release includes these key new features:

- UniSim Notifier:

Honeywell UniSim Notifier now includes a new feature on the Task Bar. This functionality allows users to easily access recent UniSim Design files and launch any installed version UniSim Design. Furthermore, users have the option to designate a specific version of UniSim Design as the default, which will open automatically from Explorer and COM.

- Sustainability:

- Carbon Capture (CCS): In R510, the Membrane Separation module is now supported for dynamics.
 - A Pressure Flow Tuning Parameter is introduced which can be adjusted to match the designed pressure drop and flow conditions.
 - Holdup for the Feed and Permeate channels are calculated dynamically.
- Green Hydrogen: The existing Proton Exchange Membrane (PEM) Electrolyzer unit operation is extended to work in dynamics to facilitate transient analysis of electrolyzer along with the balance of the plant, including electrolyzer degradation. The PEM Electrolyzer has also been extended to support multiple stacks.

- Thermodynamics:

- The Regression Environment provides tools for exploring the behavior of thermodynamic models, allowing users to determine and adjust interaction parameters and physical properties. Recent enhancements include improvements to the user interface, a more robust solver for phase equilibrium and property calculations, an advanced thermodynamic analysis tool and integration with NIST resources.

The Pure Component regression functionality now includes several new capabilities, such as the ability to regress pure component properties, including ideal gas properties and liquid density. Users can also import experimental data from NIST, regress pressure-dependent data, and compare calculated pure component properties with experimental results.

The Fluid Phase regression functionality now offers the ability to regress binary parameters using ternary liquid-liquid equilibrium (LLE) and vapor-liquid equilibrium (VLE) data. Additionally, it allows for the integration of NIST pure and VLE mixture data, introduces new dataset types specifically for Fluid Phase Regression, and provides plots to help visualize the optimization process.

A new Thermodynamic Analysis tool allows users to study a system of components at various temperatures and pressures.

- Improvements have been made to the existing eNRTL property package which has extended to multiple solvent systems, including some amines. When traditional components such as H₂O, CO₂, NH₃, H₂S, certain amines, and other substances are included, they are considered as electrolyte components in the electrolyte model. The eNRTL method can solve both chemical and vapor-liquid phase equilibrium and the electrolyte reactions are automatically incorporated into the system. Additionally, users can add their own reactions. R510 also adds an Electrolyte database with a selection of salts.
- A new Heat Transfer Fluids fluid package for simulation heating oils from the UniSim Design database, based on the PR-Twu equation of state.
- The Oil Manager now includes the new ASTM D7900 and D7169 standards:
 - ASTM D7169 represents a simulated distillation analysis created from high-temperature gas chromatography data.
 - ASTM D7900 specifically pertains to the light ends portion of the assay, covering compounds up to nC₉.

Additionally, the new ASTM D7900-D7169 combined assay type has been introduced.

- Biomass gasification now supports the characterization of biomass feed through the introduction of a hypothetical solid component. This enhancement facilitates the effective integration of biomass in gasifier unit operations.
- The Oil Manager now features a new Biofeeds option designed to process fatty acid profiles from both vegetable oil and animal fat feedstocks. The streams generated by the Biofeeds can be utilized to produce biodiesel through transesterification reactions. R520 includes sample cases showcasing reactors and reactive distillation columns for transesterification reactions.
- Enhancements have been made to the import functionality from PVTsim Nova, enabling the import of temperature-dependent binary coefficients (k_{ij} 's) and the Lohrenz-Bray-Clark (LBC) viscosity model parameters.
- Other miscellaneous enhancements:
 - Improvements to the PC-SAFT package to include a new association term and speed improvements.
 - A new HF-Ideal vapor model has been implemented for activity coefficient models, enhancing property calculations for HF.
 - New methods for estimating binary coefficients and Henry's constants for activity coefficient models have been introduced, utilizing UNIFAC, COSMO, and VTRP approaches.
 - Improvements in property/ parameter handling and regression capabilities for DIPPR components.

- **AI/ML Capabilities: UniSim Hybrid Model**

The feature has been extended to support the ONNX format, which serves as an open standard for representing machine learning models, ensuring compatibility across various frameworks and tools. This structure consists of a binary protobuf file that contains the model's architecture and parameters in a graphical format.

In terms of model support, it can import linear models, simple neural networks, and deep learning architectures. The extension includes input scaling and output unscaling factors or offsets as additional nodes within the ONNX graph.

Moreover, network layers and parameters are clearly labeled for efficient data extraction (e.g., `input_scaling_layer`). Additionally, the model's inputs and outputs are connected to the Machine Learning Evaluator before loading the ONNX file.

- **UniSim Connect: UniSim ALTView UniSim Dynamics**

- UniSim ALTView now provides the ability to incorporate plot and trends. This enhancement allows users to display trends from UniSim Design directly in ALTView and create plots by clicking the plot icon in the toolbar. Additionally, it supports both single-plot and multi-plot options for UniSim Design model variables.
- UniSim ALTView now adds a Dynamics toolbar for dynamic models. This toolbar includes several functionalities: it enables users to run or freeze simulations, execute in real-time, carry out single or multiple steps, monitor simulation time and model speed, and set data refresh intervals.

- **Column**

- Rate-Based Column Enhancements regarding additional mass/heat transfer correlations for heat/mass transfer coefficients and areas, Film discretization for mass/heat transfer, Reaction handling, Support user entered kinetic and equilibrium reactions for electrolyte systems.
- Improvements to Distillation Column regarding column enhanced to support eNRTL, Implement plots/tables for composition and transport properties for the mixed liquid phase, Additional column internal packing types, Additional hydraulic correlations for packed column.
- Enhancements regarding Sparse Solver to support for Murphree efficiency, Vaporization Efficiency and Extended Efficiency and linear Solver selection option.

- **Gasifier unit operation**

- The Gasifier unit operation and the Gasifier Reaction Section has been improved to accommodate multiple types of coal and/or biomass solid hypotheticals. Additionally, a new parameter calibration tool has been developed for Gasifier operation, replacing the previous tool to enhance the performance of parameter calibration.

- **Centrifugal Compressor**

- An Equipment Performance feature has been added to compare design specifications with actual field conditions through a Design Offset page that offers performance calibration capabilities. Users can calculate offsets based on measured discharge conditions, such as temperature and pressure, or directly specify efficiency and head offsets. The calibration mode is only available in Steady State, alongside compressor curves, enhancing the accuracy of performance assessments and supporting improved operational decision-making.

- Screw Compressor
 - A new option has been introduced for screw compressors that allows for the use of injected oil, which circulates within the compressor to serve as a lubricant, sealer, and cooling medium.
 - In Rating Mode, users can specify the cooling oil temperature and circulation oil flow rate to calculate the compressor discharge gas temperature.
 - In Design Mode, users can input the cooled oil temperature and discharge gas temperature to predict the required circulation oil flow rate.
 - The injected oil enters at the inlet, blends with the compressed gas, and separates from the gas at the discharge end, before circulating back to the inlet. Additionally, key physical parameters related to the circulated oil, including disengagement, recovery, and cooling metrics, can be exported for user reference on the Process Flow Diagram (PFD).
- Fired Heater
 - The Fired Heater has been enhanced to work in steady state and accommodates a variety of input scenarios. It supports multiple passes and allows for various fuel and air inputs, enabling the calculation of fuel flow and thermal efficiency under the assumption of complete combustion. Users can customize specific sections of the heater, including the radiative, convective, and economizer sections.
- UniSim EO:
 - The EO Simultaneous Flash VLE functionality has been enhanced in version R510.
 - The 3-Phase Total Condenser now supports subcooling. When subcooling is enabled, users can specify either the desired degrees of subcooling or the target temperature to achieve.
 - Support for the NVIDIA GPU Linear Solver is available for the simultaneous solution engine utilizing the NOVA NLA solver in UniSim EO. This feature requires NVIDIA GPU hardware. Significant benefits can be observed on large models (over 100,000 equations/variables) when using a capable GPU, such as the NVIDIA A100. This functionality is applicable only to the 64-bit version of EO.
- UniSim Pressure Relief Systems

PRS continues to be developed including improvements in the new vessel Initialization option for external fire scenarios which allows to define simultaneously pressure, temperature and liquid level.
- UniSim Excel Interface Tool

The UniSim Excel Interface now offers portability for Browser Mode, similar to the capabilities of the legacy Browser tool. Additionally, templates can be saved and archived for future access, even if the tool is not currently installed.

For further information about UniSim Design R510, including details of how to obtain it, please see: [UniSim Design R510 information](#) (Visible without signing in, but includes some links that do require a sign-in.)

[Back Home](#)

Videos and Technical Webinars

The following two Knowledge Base articles have the indexes for the “How do I ...” and technical webinar video series:

- [UniSim Design How do I video series](#)
- [Technical Webinar series - Index](#)

These articles require a sign-in. (Visit process.honeywell.com, click on “Sign In” at the top right then “Create an Account,” find instructions in the [UniSim Design Suite Technical Support – User Guide](#). Also, watch [UniSim Design - How do I - Use the Knowledge Base?](#))

Look out for links to these videos on the UniSim Design Home/“What’s New” page. (If you don’t see this view, activate it with the gear wheel or person button at the top right.)

Follow these links to view other relevant Knowledge Base articles (visible without signing in):

- [Existing customers - how to obtain UniSim Design Suite R510 and earlier](#)
- [UniSim Design Suite Installation and Licensing Instructions - Commercial Release versions](#)

Newsletter Articles

We aim to provide articles of interest to the UniSim Design user community. If you have any feedback or have suggestions for topics to cover here, please feel free to [Contact Us](#); we value your input.

Article submitted by Irina Florea, UniSim Design Suite Global Support Team

[Back Home](#)

Honeywell APC

Product Discontinuation

Honeywell APC R520 is planned for release third quarter 2025. As part of Honeywell APC R520, the following products will be discontinued.

1. **PSOS Web Server**

PSOS Web Server was introduced in Profit Suite R400 and will be discontinued in APC R520.

It has been replaced with APC Web Viewer (APCWV), released in Profit Suite R440. APCWV does not require any additional licensing.

2. **Profit Expert**

The Profit Expert software will no longer be available in APC R520. Functionality has been replaced with the CPA (Control Performance Analytics) product line. For customers with a Profit Expert license, please contact GTAC to validate and coordinate eligibility for a CPA software license replacement.

3. **Profit XL**

The Profit XL toolkit will be removed from APC R520 due to the discontinuation of Excel Automation by Microsoft. While some customers have been able to successfully continue running Profit XL, with bypassed security, these workarounds are not inline with the Experion Security Model. Additionally, these workarounds are not always predictable due to changing Microsoft Security Updates. As an alternative, sites may consider to use SDK or vbscript toolkits. Additionally, Python libraries, via the APC Python Socket, may serve as a replacement for Solver requirements. Please consider to contact GTAC for possible implementation alternatives / coding examples.

4. **APC HMIWeb Library**

The APC HMIWeb Library (shapes and displays) will no longer be provided or supported by GTAC in APC R520. While most customers use PSOS / APCOS as their Operator interface, some Experion customers have opted to leverage the APC HMIWeb shape and display library. These displays integrate with Experion Advanced OPC Tags and the Experion URT System Interface. Unfortunately, the APC HMIWeb library was originally developed in Experion R2xx, and with each new Experion release requires significant revamps, particularly with the existing ActiveX components. As such, support for these displays has become overly onerous, and the difficult decision was made to no longer include this option as part of the APC solution. Even though these HMIWeb files will no longer be provided, sites may continue to leverage the Experion Advanced OPC Tag for use with their custom HMIWeb displays, which may include the legacy APC library. Customers can continue to use APCOS and Web Viewer as the primary and supported GUI.

For any questions or concerns, please reach out to your local GTAC support team.

[Back Home](#)

Honeywell Forge Alarm Management

Honeywell Alarm Management | Reporting R2.3.0 (standard On-Prem installable offering)

We are pleased to announce that the **Honeywell Alarm Management | Reporting R2.3.0** has been released in March 2025. This release provides new functionality as well as addressing prior release issues.

New features include:

- Improved data collection and integration
 - Collect Historical data via OPC UA History
 - REST API's to expose Alarms & Event KPI's for integration purposes
 - Collector Redundancy
 - Enabled Services integration
 - APO Integration: Legacy ACM reports in M&R transition to APO
 - Special handling to Adopt PBM Dynamics
- Reporting Enhancements and improved usability
 - Allow Stacked Report Modification after Custom Report Creation
 - Allow multiple uses of the Stale Alarm widget in a Stacked Custom Report
 - Alarm Category creation and filtering on APO report
 - Rule Builder implementation in .Net

The Software Change Notice (SCN) will be published to Process.Honeywell.com for more information.

Honeywell Alarm Management (HAM) Product Family Consolidation in Process.Honeywell.com

Overview

We have now completed the consolidation of legacy Alarm Management product families and their respective products into the current product family name, **Honeywell Alarm Mgmt**. This change affects the following supported products:

Legacy Product Family Name	Product Name
AAM - Alarm Management	Alarm Configuration Manager
DynAMo	DynAMo Metrics & Reporting
DynAMo	UserAlert
Honeywell Forge Alarm Management	Alarm Performance Optimizer
Honeywell Forge Alarm Management	Honeywell Forge Alarm Management – Reporting
Honeywell Forge Alarm Management	Honeywell Forge Process Safety Analyzer

Knowledge Article Search Impact

When searching knowledge articles please filter on **Honeywell Alarm Mgmt** Product Family to limit the results to all alarm management products:

Enter search terms like product name or specific Keywords...

[Search Tips](#)

Filter Results

Honeywell Alarm Mgmt X

PRODUCT FAMILY

Select All Clear

- ☐ Alarm Management (607)
- ☐ Field Products (77)
- ☐ Forge Blending and Movement (40)
- ☐ Forge Operations Management (141)
- ☐ Forge Workforce Productivity (34)
- ☐ Gorter (1)
- ☒ Honeywell Alarm Mgmt
- ☐ Honeywell Forge (5)

1575 Items

Sort by date

**AddNavigationNode Error during ACM Web R120 Installation because Windows Users group does not have default permission****Summary:** During ACM Web R120.1 installation, AddNavigationNode error was returned. Re-installation did not solve the issue.**Article Number:** 000142253[SHOW MORE](#)**ACM Web 120 Routing Service not starting on L4****Summary:** Following installation and editing of 'ACMRoutingService.exe.config' on L4, ACM Web Routing Service on L4 server will not start**Submit Technical Support Request Impact**

When raising a Technical Support Request (SR) please use the Product Family **Honeywell Alarm Mgmt** so that all alarm management products will be listed under the Product field:

Submit Technical Support Request

For critical cases, you must call 1-800-822-7673

01 CUSTOMER & SUPPORT INFO / 02 PRODUCT INFO & SYSTEMS

* Product Family ⓘ

Honeywell Alarm Mgmt



Model Number ⓘ

Model Number

* Symptom ⓘ

Symptom



* Remote Connection Availability ⓘ

* Product ⓘ

Product



DynAMo Metrics & Reporting R210.1

DynAMo Metrics & Reporting R202.1

DynAMo Metrics & Reporting R201.1

DynAMo Metrics & Reporting R200.2

Customer Reference ⓘ

[Back Home](#)

Alarm Management Product Support Update

- **DynAMo Metrics & Reporting R210.x** support status changes to **Phased-Out** in May 2025
- **Process Safety Analyzer R20x** support status changes to **Phased-Out** in January 2025
- **Alarm Configuration Manager R321** support status changes to **Phased-Out** in December 2025

REMINDER! Experion upgrade to R520/530 causes DynAMo M&R Collector Data Corruption

If the Experion DCS is upgraded to R520+ from an earlier version, it may lead to data corruption problems with DynAMo Metrics & Reporting or HFAM Reporting installations. This migration can introduce extra (and invalid) Tagnames, potentially affecting the licensed tag-count limit for M&R. Additionally, it may result in the creation of extra Assets, which could negatively impact report performance.

For more details refer to knowledge article KSM2022-DYN003x.

Also refer to Knowledge Article 000189115 – ‘EAS ODBC R530 Client Hotfix Matrix’ which lists the ODBC version required against the Windows Operating System installed on the collector, and the minimum version of Experion required to communicate with the ODBC driver.

If you have any doubt please contact the Honeywell Alarm Management Technical Support (GTAC) team if you are planning to migrate to Experion R520+, they will review your system and inform you of what steps are needed to avoid system downtime.

Upgrading Experion to R520/530 prevents DynAMo D&E/ACM Clients from connecting to the application server

Experion 520+ recommends encryption types **AES256_HMAC_SHA1**, **AES128_HMAC_SHA1**, and **future encryption types** as default for Kerberos authentication to ensure secure communication and data integrity. Below is an extract from Experion documents:

Category	Policy	Value
Group policy	Network security: Configure encryption types allowed for Kerberos	AES128_HMAC_SHA1, AES256_HMAC_SHA1, Future encryption types

When these policy settings are implemented on the Experion server, the related client-server applications, like ACM, must be updated as well. Specifically, all client and server machines, along with service users, must be compatible with the new encryption types. If this compatibility is not achieved, it could lead to authentication problems during DCOM communication between the application client and server.

A knowledge article how to address this problem will be published soon. **If you are facing problems with ACM clients not connecting to the ACM application server then please contact the Honeywell Alarm Management Technical Support (GTAC) team.**

[Back Home](#)

Knowledge Article Quarter: Summary of Articles – 2025

Below is a list of knowledge articles published to **Process.Honeywell.com** for the following supported products:

- DynAMo Metrics & Reporting R202.1 – R210.1
- Honeywell Forge Alarm Management | Reporting R2.2.0 – R2.3.0
- Honeywell Forge Alarm Management | Documentation / DynAMo Documentation & Enforcement (ACM R321.12)
- Honeywell Forge Alarm Management | Alarm Performance Optimizer R1.0.0 – R2.0.0
- Honeywell Forge Alarm Management | Process Safety Analyzer R201.x – R2.2.0

Article Number	Products	Title	Summary
000191931	Alarm Configuration Manager R321	ACM Tag Synchronization task fails to start	ACM Tag Synchronization task fails to start with error "The operator or administrator has refused the request. (0x800710E0)".
000192933	Alarm Configuration Manager R321	ACM-Experion script engine fails	Experion script engine fails when ENFMSG(x) points are not valid. Error message "scpeng.exe:\$RCSfile\$:\$line\$ Can't get point number for point >ACMMSG(5)".
000191777	Alarm Configuration Manager R321 Alarm Performance Optimizer R1 Alarm Performance Optimizer R1.1.0 Alarm Performance Optimizer R2.0.0 DynAMo Metrics & Reporting R202.1 DynAMo Metrics & Reporting R210.1 Honeywell Forge Alarm Management – Reporting R2	What are the current SQL server versions and their 'Release to Manufacturing' version?	When SQL server database will not restore how do you find out what SQL server version you require to restore the back up
000192267	Alarm Configuration Manager R321 Alarm Performance Optimizer R1.1.0	The APO functionality is consistently becoming unresponsive	Summary : APO functionality is repeatedly getting stuck and requiring restarts of the APO Transfer Service
000192264	Alarm Configuration Manager R321 DynAMo Metrics & Reporting R202.1 DynAMo Metrics & Reporting R210.1 Honeywell Forge Alarm Management – Reporting R2.2.0 Honeywell Forge Alarm Management – Reporting R2.2.1 UserAlert R321	What are the Windows Operating Systems used in the latest versions of Experion PKS?	List all the Windows Operating Systems for the latest Experion R5xx point releases to ensure ACM, APO and HAM-R servers and clients are configured correctly
000192695	Alarm Performance Optimizer R2.0.0	Procedure to update self-signed to CA certificate in APO 2.0.0	Need a procedure to update APO 2.0.0 servers with customer provided CA certificates by replacing SSL certificates implemented during project commissioning phase.
000192437	DynAMo Metrics & Reporting R202.1	Failed to connect to the server error upon launching Collector UI	DynAMo Metrics and Reporting (M&R) R202 HF7 is installed freshly on a Windows 2019 Server. After Installation, the Collector UI was opened for configuration. The following Error: "Failed to connect to the server. Please contact Administrator" was noticed upon invoking the M&R collector UI.
000191810	DynAMo Metrics & Reporting R202.1	ODBC Streamer Fails when Connecting to Foxboro	All the necessary and accurate parameters have been entered on the ODBC Streamer Connection Details page. However, when clicking the Test Connection button on the Connection Details screen, the window closes unexpectedly. Error message in system event log states: "Faulting application name@ HoneywellODBCStreamerConfig.exe" and "Faulting module path: C:\Invensys\Aim\common\aimodbc.dll"
000192299	DynAMo Metrics & Reporting R202.1 DynAMo Metrics & Reporting R210.1 Honeywell Forge Alarm Management – Reporting R2.2.0 Honeywell Forge Alarm Management – Reporting R2.2.1	HAM-R Activate License issue using license activation utility	Using the License Activation Utility produces "Error – Object not set to an instance of an object" and finally the error "Unable to read config.xml : Could not find file C:\Program Files (x86)\Honeywell\License Activation Utility\WWWCommon\service\2.0\Config.xml"
000192047	DynAMo Metrics & Reporting R202.1 DynAMo Metrics & Reporting R210.1 Honeywell Forge Alarm Management – Reporting R2.2.0 Honeywell Forge Alarm Management – Reporting R2.2.1	How to install Experion RDM and ODBC Client without using full ESIS	Setting up the Honeywell Reporting Collector requires installation of Experion Redirection Manager and/or Experion ODBC Client when connecting to Experion systems. Utilizing the full ESIS package may not be practical because of its significant size and the possibility of it being unavailable on-site at a specific release
000191842	DynAMo Metrics & Reporting R202.1 DynAMo Metrics & Reporting R210.1 Honeywell Forge Alarm Management – Reporting R2.2.0 Honeywell Forge Alarm Management – Reporting R2.2.1	Complete cache regeneration very slow	Complete cache regeneration is taking over 48 hours to complete due to a very large database with only 32GB of system memory on the SQL Server
000192892	Honeywell Forge Alarm Management – Reporting R2.2.1	The Overall Average line is missing in the Average Alarm Rate widget after upgrade to HAM R221	Incorrect Average Alarm Rate (Hour) graph after HFAM 2.2.1 HF3 upgrade. HAM-Reporting was upgraded from R220 to R221. After a successful upgrade the Average Alarm Rate (Hour) the Overall Average line graph is missing. The widget has only the threshold line but not the overall average line.
000192786	Honeywell Forge Alarm Management – Reporting R2.2.1	Not able to create/save Event Store	This is a 4 server setup, installation was successful but event store is not able to save.

Article Number	Products	Title	Summary
000192446	Honeywell Forge Alarm Management – Reporting R2.2.1	HAM-R Reports Not Refreshing	Summary : After installing January MS patches, the filter buttons on HFAM do not work

[Back Home](#)

Honeywell Forge Operations Management

Knowledge Article: Summary of Articles – 2025

Below is a list of knowledge articles published to **Process.Honeywell.com** for the following supported products:

- Uniformance Executive R301 – 330.1
- Uniformance KPI R121 – R140.1
- Honeywell Forge Operations Logbook R240.1 – R246.2
- Honeywell Forge Operations Monitoring R240.1 – R246.2

Article Number	Products	Title	Summary
000192927	Honeywell Forge Operations LogBook R246.1 Honeywell Forge Operations LogBook R246.2	Shift summary report related issues after migrate R242 to R246	HTTP Error 404.0 not found for a submitted report. HOTO submitted report is not saved in PDF path.
000192837	Honeywell Forge Operations LogBook R246.1 Honeywell Forge Operations LogBook R246.2 Honeywell Forge Operations Monitoring R246.1 Honeywell Forge Operations Monitoring R246.2	License not activated error in HOM R246	License is expired or not activated error is observed after HOM R246 license activation is successful.
000192836	Honeywell Forge Operations LogBook R246.1 Honeywell Forge Operations LogBook R246.2 Honeywell Forge Operations Monitoring R246.1 Honeywell Forge Operations Monitoring R246.2	"Exceeded allowed" error when activating HOM R246 license	Activate HOM R246 license and receive "exceeded allowed" error.
000192813	Honeywell Forge Operations Monitoring R246.1 Honeywell Forge Operations Monitoring R246.2	Monitoring is lagging many times a day in HOM	Tag monitoring is not processing data and reprocessing data many times a day in Honeywell Operations Monitoring R246.2.
000192749	Honeywell Forge Operations LogBook R245.1 Honeywell Forge Operations Monitoring R245.1	User is unable to use Target Configuration on client machine	User is unable to use Target Configuration page on client machine. The admin user is able to use the Target Configuration page on the web server. On the client machine the page is loaded without target name after the target is selected.
000192627	Honeywell Forge Operations LogBook R246.2 Honeywell Forge Operations Monitoring R246.2	Asset exist in scope but not in Plant Hierarchy or Asset Configuration pages	There are assets observed in the Scope page but not in Plant Hierarchy or Asset Configuration pages.
000192265	Honeywell Forge Operations LogBook R246.2 Honeywell Forge Operations Monitoring R246.2	Unable to delete test asset	User cannot delete Test Assets due to error message "Error occurred. Provided asset Test doesn't exist. Failed to delete asset".
000192155	Forge Operations Logbook R242.1	The custom error module does not recognize this error	The error in MES log is "The remote certificate is invalid according to the validation procedure". In browser "The custom error module does not recognize this error" is observed.
000192225	Honeywell Forge Operations Management R246.1	HOM Runtime Update or Modify Procedure	Procedure for updating service account in HOM
000191986	Honeywell Forge Operations Management R246.1	Flexera License Activation error	Customer returned the license, moved the VMs to cloud, Activated license again where it throws error "Service not available"

[Back Home](#)

Current Product Releases

Advanced Applications:

Honeywell Alarm Management

- Reporting **R2.2.1**
- Alarm Performance Optimizer **R2.0.0**
- Documentation (**ACM R321.12.7**)
- Notifications (UA R321.2)
- Process Safety Analyzer **R2.1.1**

Honeywell Operations Management **R246.2**

- Operations Logbook
- Operations Monitoring
- Operations Instructions
- Operations Limit Repository

UniSim Design Suite

- UniSim Design **R500**

Honeywell Workforce Competency **R530.1**

- Process Training Simulator
- Tutor
- Curriculum
- ProSim

Honeywell Production Management

- Production Accounting and Reconciliation **R212.3**

Honeywell APC (Profit Suite)

- Release **R513.1**

Uniformance

- Uniformance PHD **R430**
- Uniformance Process Studio R323
- Uniformance Asset Sentinel **R532**
- Uniformance Insight **R240**
- Uniformance Cloud Historian R100
- Uniformance Executive **R331**
- Uniformance KPI **R140.1**

Control Performance Monitor

- Control Performance Analytics-Unified (CPA-Unified) **R610.1**
- Taiji PID **R320.2**

Honeywell Blending and Movement (HBM) Suite

- Blending and Movement (PBM) **R530.2**
- Blend Performance Monitor (BPM)
- Experion Blend Controller (EBC)
- Experion Tank Monitor (ETM)
- Profit Inventory Monitor (PIM)
- Profit Blend Controller (PBC)
- Profit Blend Optimizer (PBO)
- LIMS Viewer (LV)
- Profit Movement Management:
 - Movement Monitor (MM)
 - Movement Control (MC)

[Back Home](#)

Contact Information

All GTAC support should be directed through <https://www.process.honeywell.com/en-US/contact-us/customer-support-contacts/Pages/default.aspx> Portal.

Americas Support Centre Contact Information

Forge Blending & Movement (FBM/PBM/BMA/OM&S) Support	rac.support@honeywell.com	1-289-333-1500
OptiVision Help Desk	optihelpgroup@honeywell.com	1-513-595-8944
Honeywell Forge APC (Profit Suite) Support	apc.apptech@honeywell.com	1-800-822-7673
Technical Assistance Centre (TAC) – Americas		1-800-822-7673
Uniformance Help Desk	support@honeywell.com	1-403-216-2870
UniSim Design Suite Support	Unisim.Support@honeywell.com	1-800-822-7673
Honeywell Forge Workforce Competency Support	hpscusersupport@honeywell.com	1-800-822-7673

Asia Pacific (AP) Technical Assistance Centre (TAC) for Honeywell Connected Industrial contacts

Honeywell Forge APC (Profit Suite) Support	apc.support.emea@honeywell.com	
OptiVision Help Desk	p3its_oncall@honeywell.com	+ 358 20752 2300
Forge Blending and Movement (FBM) Solutions Support	bma.support.ap@honeywell.com	
UniSim Design Suite Support	unisim.support@honeywell.com	
Honeywell Forge Workforce Competency Support	hpscusersupport@honeywell.com	

Honeywell Asia Pacific regional GCCC hotlines:

Australia	GCCC.Pacific.HPS@Honeywell.com	1 300 301 135
China:	400-820-0386	800-820-0237
India:		1-800 2335051
Indonesia:		0018-03-440-212
Malaysia:		1 800-812-674
New Zealand:		0800 855 663
Pacific (outside Australia and New Zealand):		+65 6787 1788
Philippines:		1-800-1441-0223
Singapore:		6823-2215
Taiwan:		0800-666-051
Thailand:		0018-004-415-283

Europe and Middle East and Africa, (EMEA) Technical Assistance Centre (TAC) for Honeywell Connected Industrial contacts

Control Performance Monitor (CPM)	CPM.support.emea@honeywell.com	All global queries
OptiVision Help Desk	p3its_oncall@honeywell.com	+ 358 17 57 89 300

EMEA Honeywell Connected Industrial Helpline		+32 (0)2 728 2200
Honeywell Forge APC (Profit Suite)	apc.support.emea@honeywell.com	
Production Control Centre	kunde@honeywell.com	+47 6676 2180
Forge Blending and Movement (FBM)	bma.support.emea@honeywell.com	
Honeywell Forge Workforce Competency Support	hpscusersupport@honeywell.com	
UniSim Design Suite Support	unisim.support@honeywell.com	
Automation College	www.automationcollege.com	

For questions, comments, or archived copies of the Guardian newsletter, please contact Gunjeet Chaudhari at Gunjeet.Chaudhari@Honeywell.com.

Honeywell Process Solutions

1250 West Sam Houston Parkway South
Houston, TX 77042

Honeywell Control Systems Ltd, Honeywell
House Skimped Hill Lane Bracknell RG12 1EB

555 Huanke Road, Zhangjiang Hi-Tech Park,
Shanghai, China 201203

www.honeywell.com/ps

[Back Home](#)