

HONEYWELL INFORMATION, NEWS, AND TIPS



NOVEMBER 2019

In This Issue

Planning for the 2020 Americas Honeywell Users Group.....2

Profit Blending and Movement R510 Released.....2

R687.5 and TPN R688.3 Release Announcements3

Solution : Experion Alarm Pager & SMS using Generic GSM Modem.....4

Experion Update Matrix.....4

Experion Compatibility with TPN releases.....5

Experion Client Server Technical Audit Document.....8

EATON 8937-HN lifecycle update.....9

System Inventory Tool R300.1 Announced.....9

What is SIT and Why Do You Need It?.....12

System Inventory Tool: Is it safe to use in my control system?.....15

System Inventory Tool: Available with No Purchase Required.....16

Why it's Important to use the Latest Version of the System Inventory Tool.....17

System Inventory Tool (SIT) and Experion PKS Compatibility Matrix.....17

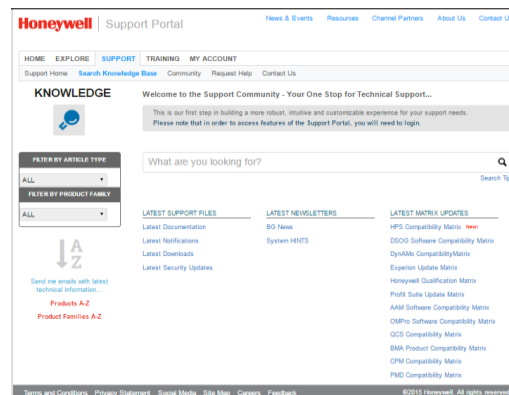
HPS Priority Notifications.....18

Products Revisions and Support Status19

Subscribe to HINTS

Login to www.HoneywellProcess.com. Go to Support > **Search Knowledge Base** and click on [System HINTS](#) under Latest Newsletters. In the page that opens, click on [Subscribe to Support Newsletters \(System HINTS\)](#)

The Search Knowledge Base page allows you to search our Knowledge Base with many technical support-related articles. So, if you need technical assistance, try the Knowledge Base first!



More Support Online (login)

You can also [create a Support Request online](#). You can monitor your Support Request cases by visiting the [Request Help](#) page. For all other support queries, please [contact our Customer Contact Center](#).

For questions or comments related to the HINTS newsletter, please write to [HPS System HINTS](mailto:HPS.System.HINTS).

Planning for the 2020 Americas Honeywell Users Group



In 2020, Americas Honeywell Users Group symposium will take place for the 45th time! Imagine being part of this special occasion, which takes in Orlando, FL.

We invite you to add the 45th Americas Honeywell Users Group in [your calendar](#).

June 21-25, 2020
Honeywell Americas Users Group Symposium
JW Marriott Orlando Grande Lakes
Orlando, Florida

The Steering Committee has started to develop the agenda. For questions or if you wish to submit ideas on topics, please do not hesitate to contact: usersgroup@honeywell.com.

Stay connected with: www.honeywellusersgroup.com.

Profit Blending and Movement R510 Released

On September 26, 2019, Honeywell released Profit Blending and Movement R510.

Profit Blending and Movement R510 represents the latest in Honeywell's effective, field-proven solution for managing and controlling material movements and blending operations in refineries, terminals, and other tank farms.

Functional enhancements introduced with PBM R510 include:

- New enterprise-enabled Blend Performance Monitor to store, update, analyze, and report blend information, enabling improvements to blend planning and execution.
- New HUE-driven Profit Blend Controller UI, enhancing presentation of blend information to improve operator effectiveness.
- New "Composite" blend property optimization objective function, providing flexibility in defining combinations and relative importance of the standard objectives 'minimum distance from starting recipe,' 'minimum giveaway,' and 'minimum cost.'
- Significant improvements in the performance of movement control functions for very large piping networks.

Hardware and Software Systems Requirements

On release of PBM R510, support for the following is provided:

- Experion R51x
- Microsoft Windows 10 Workstation and Windows Server 2016 (64 bit)
- SQL Server 2017 (64-bit)
- Internet Explorer 11 for the aforementioned OS platforms
- .NET 4.6.2
- Microsoft Office 2016 (32 bit only)
- Adobe Acrobat DC

Following the release of PBM R510, support for the following is planned to be verified:

- Experion R501.y
- SQL Server 2014 SP2 (64-bit)

R687.5 and TPN R688.3 Release Announcements

TPN R687.5 and TPN R688.3 maintenance releases are available for shipment.

The maintenance releases for TPN R688.3 contains PAR fixes related to:

- NG support on ELCN
- Fix for EHPM switch over with FFEO issue
- ELCN PAR fixes

The maintenance releases for TPN R687.5 contains PAR fixes related to:

- Fix for EHPM switch over with FFEO issue

Following this announcement, the TPN releases lifecycle statuses are as follows:

- R688.3 – Current
- R688.2 – Supported
- R688.1 – Phased-out
- R687.5 – Supported
- R687.4 – Supported
- R687.3 – Phased-out
- R686.4 - Supported
- R685.4 – Supported
- R684.x and older releases – Phased-out

Product lifecycle phases are defined by the Standard Product Support Policy as per Customer Resource Manual Tab PD23.

Honeywell's standard software release numbering scheme is RABC.D, where A = Series, B = Functional, C = Maintenance, and D = Point. TPS software releases will continue to follow the standard release numbering scheme. However, for TPN R680 and up only, the scheme is RABB.CD, in order to allow two digits for Functional release identification.

Only Latest and Latest-1 patches/updates are supported at the defined support level for the software functional release.

TPN software releases are available for electronic download and CD/DVD media distribution.

For more details related to this software release, refer to TPN R687.5 and TPN R688.3 SCN.

Solution: Experion Alarm Pager & SMS using Generic GSM Modem

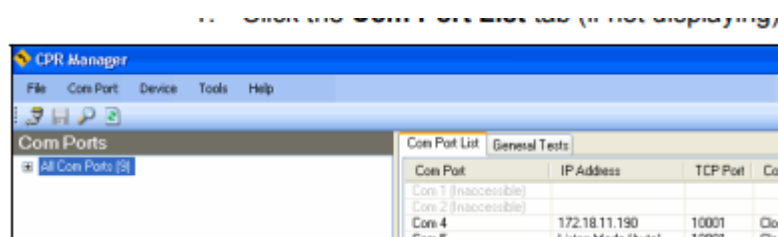
From Experion R410.7, R430.4, R431/R432 and R5xx onwards, a generic GSM modem (serial device with an embedded GSM) connected to Experion would be able to send SMS using the Experion Alarm Pager functionality without the need of subscribing to a pager service provider.

The Pager functionality would use the SIM card embedded in the GSM Modem to send SMS directly from the modem device.

There is no plan to qualify specific GSM modems. Any generic GSM modem responding to AT commands (and therefore exposed to Windows as a generic modem) would work.

The two most common modems that are used by projects currently are the M100 3G modem and the ETM9440-1 or equivalent.

If required, a Lantronix serial port extender can be used to create a virtual serial port on a virtualized EPKS server. The software that comes with this extender (CPR manager) is used to create the virtual serial port.



Article Number 104928 describes a typical configuration: Alarm pager with Digi One IAP and Cinterion BGS2T GSM modem.

Experion Update Matrix

We have updated the Experion Update Matrix to version 238.

The Experion Update Matrix can be found in attachment or on the following link (login required):

www.honeywellprocess.com/library/support/software-downloads/Experion/experion-update-matrix.zip

Version	Date	Update
v238	6-Nov-19	<p>Microsoft Security Update ISO - 15 Oct 2019 Microsoft Security Updates RMISO - 15 Oct 2019 - Honeywell Trace tab SUIT ISO User Guide - 15 Oct 2019</p> <p>EPKS R510.2 Tools and Controller Hotfix 7 EPKS R501.6 - release EPKS R501.6 Tools and Controller Hotfix 1</p> <p>PN2019-24A RAL2019-07 SN2019-11-01 01</p> <p><i>Housekeeping - updating links & applicable nodes</i></p>

Experion Compatibility with TPN Releases

We are sharing with you the Experion compatibility with TPN. We are also providing the required TPN release to enable Experion features.

Compatibility with TPN Releases

The following table presents the compatibility between the Experion (ESVT, ES-T, ACE-T) and TPN releases.

Experion Release Series	Minimum TPN System Software
R201, R21x, R301.x	TPN R641.2
R31x.x, R400.x, R410.x, R430.x, R431.x, R432.x, R500.x	TPN R535.1 or later R5xx releases in this series TPN R652.1 or later R6xx releases in this series
R501.2, R510.2	TPN R535.1 (or later R5xx) No Longer Supported TPN R687.5 with or without ELCN/EUCN
R501.4, R501.6, R511.1, R511.2, R511.3	TPN R535.1 (or later R5xx) No Longer Supported TPN R687.5 with or without EUCN TPN R688.3 with ELCN

In order to use some Experion features, later versions of TPN are required for proper integration with Experion. They are enumerated here:

This Version of TPN Software Release	Is Required for this Functionality	Notes
TPN R688.3	ELCN Phase 3	Experion R501.6, R511.3. ULM R301.21 is required
TPN R688.2	ELCN Phase 2	Experion R501.4, R511.1, R511.2. ULM R301.20 is required
TPN R687.4	Experion LCN (ELCN), Triconex Communication Module Interface (TCMI)	For TCMI capability, ULM R301.17 is also required A minimum of Experion R501.2 is required for ELCN functionality
TPN R686.4 (or later)	Enhanced Network Bridge (ENB)	ULM R301.16 is also required. For Experion Direct Connection capability (optional license), a minimum of Experion R432.2 is required
TPN R685.3 (or later)	EUCN Part 2b (i.e. automatic NIM point import to Experion database)	ULM R301.14 is also required
TPN R685.3 (or later)	Experion Hiway Bridge (EHB)	EHB is supported for on-process migrations starting R431
TPN R685.1 (or later)	EUCN Part 2 (i.e., peer-to-peer from C300 Controllers to EHPM Controllers)	ULM R301.12 is also required
TPN R685.1 (or later)	The ability to load sequence programs from the Experion Detail Display	Functionality will give warning message if attempted to be used from an earlier TPN version
TPN R684.2 (or later)	EUCN Part 1 (ENIM/EHPM) Functionality	Also, need ULM R301.11 (or later)

TPN R683.2 (or later)	Fully functioning integration for HMI Web TPS detail displays	Experion R410.x (or later) is also required
TPN R681.x (or later)	Proper integration of selective contact cutout functionality	Experion R311.x (or later) is also required
TPN R680.1 (or later)	Not displaying disabled alarms on Flex Stations	Experion R310.x (or later) is also required
TPN R680.1 (or later)	To allow the “Option to Display Uncertain Quality for TPS points” functionality	Option found in TPN Server component configuration

The Utilities & Load Module Media (ULM) contains (among other things) the EST and ESVT load modules, which are necessary for proper Experion integration.

Note: It is **crucial** to have the version of the ULM that matches with your version of Experion software to ensure proper integration. Listed below are specific features and their versions.

Utilities & Load Module Media (ULM) Requirements:

- The Utilities and Load Module Media (ULM) version for Experion R410.x is R301.9.
- The Utilities and Load Module Media (ULM) version for Experion R430.x/ Experion R431.x is R301.12.
- The Utilities and Load Module Media (ULM) version for Experion R432.x/ Experion R500.x is R301.16.
- The Utilities and Load Module Media (ULM) version for Experion R501.2, R510.2 is R301.19.
- The Utilities and Load Module Media (ULM) version for Experion R501.4, R511.1 and R511.2 is R301.20.

This Version of the EST Load Module	Is Required for this Functionality	Notes
EST.LO load module version 68.9 (or later)	Required for Experion console enable/disable functionality	Functionality introduced in Experion R500 and later
EST.LO load module version 68.1 (or later)	Required for “Message Clear Required” functionality	Also supported on TPN R53x.x with EST.LO load module version 53.2 (or later)
EST.LO load module version 68.5 (or later)	Required for the TPS System Status Indicator (S) and TPS Console Status Indicator (C) on the Experion Station status bar	Not supported in TPN R53x.x.

For full EUCN vs. Experion vs. TPN release compatibility, always refer to the “EUCN” tab in the latest “Experion Update Matrix” spreadsheet, which is available on honeywellprocess.com.

Experion Client Server Technical Audit Document

We have updated the GTAC Experion Client Server Audit Document with important lessons learned since the last release of the technical audit document.

46	Nov 2019	Added Check 92 – Station Configuration Cheat Sheet Added Check 93 - Checking C200/C300 Controller Internal Database Consistency
----	----------	--

Deliverables

- Audit_ClientServer_rev46.pdf
- GTAC_CS_Companion_rev46.zip
- Audit_ClientServer_rev46.doc

List of all GTAC Technical Audit Documents

Article #	Audit Document Title	Experion Scada	Experion with CDA points	Experion with TPS points	Experion with CDA and TPS points	EAS/RESS/Esriver
65350	Experion Server Client GTAC Audit Document	x	x	x	x	x
65389	Experion Network GTAC Audit Document	x	x	x	x	x
65349	EBR GTAC Audit document	only when using EBR	only when using EBR	only when using EBR	only when using EBR	only when using EBR
65322	GTAC Audit Document for Experion PKS Controllers		x		x	
65302	GTAC Audit Document for ACE		only when using ACE		only when using ACE	
65191	GTAC HMIWEB Audit Document	x	x	x	x	x
65346	Experion TPS Integration audit document			x	x	
65176	PHD Experion Link GTAC Audit document	only when using PHD	only when using PHD	only when using PHD	only when using PHD	only when using PHD
65434	Experion Virtualization GTAC Audit Document	only when using Experion Virtualisation	only when using Experion Virtualisation	only when using Experion Virtualisation	only when using Experion Virtualisation	only when using Experion Virtualisation
65131	Experion Orion Console and Thin Client Audit Document	only when using Orion Console or Wyse thin client	only when using Orion Console or Wyse thin client	only when using Orion Console or Wyse thin client	only when using Orion Console or Wyse thin client	only when using Orion Console or Wyse thin client

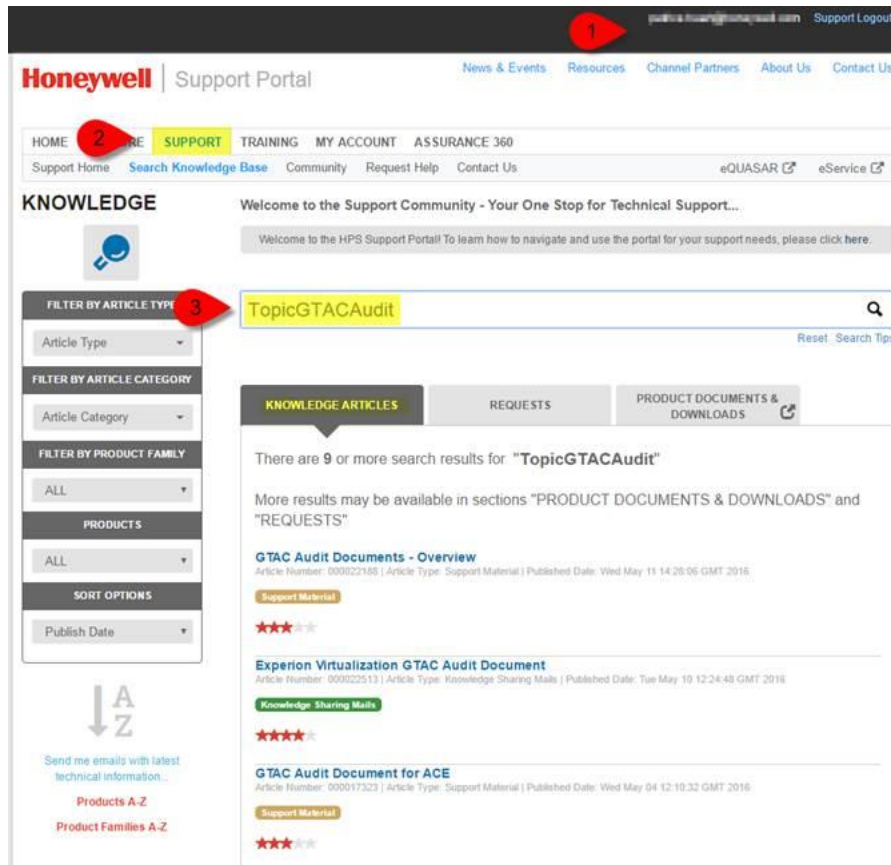
Instructions for Download

Once logged in to www.honeywellprocess.com, you would go to the Support Section, then search for “Client Server and Audit”.

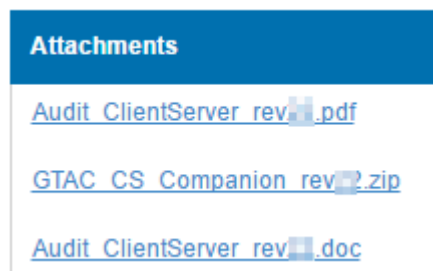
Then select “Experion Server Client GTAC Technical Audit Document”, which is article [65350](#).

GTAC is using the TOPICS feature in the Knowledge Base to cluster similar articles. For all our GTAC audit documents, the topic name to be used is “[TopicGTACAudit](#)”

When you search for this topic, it will return you also all other GTAC Audit documents (see example below).



Files can be downloaded from the Attachment section of the article as shown below:



EATON 8937-HN lifecycle update

8937-HN has been stopped by EATON-MTL due to obsolescence with immediate effect.

The replacement part is 8937-HN2 which is expected to be available in February 2020.

Meanwhile, please consider using MOXA extender – part number ICF-1150I-MSTT-HPSC in your application

System Inventory Tool R300.1 Announced

The System Inventory Tool R300.1 is now available for download from the [System Inventory Tool Landing Page](#) at no charge for all Honeywell accounts

The [System Inventory Tool](#) R300.1 is a self-service tool that HPS customers install on their Experion PKS R400.8 or newer system to scan the inventory details of the entire system, including network, Cisco switches and associated nodes at predefined intervals. The tool generates an inventory file that users upload to the [Support Portal](#) to see their inventory details in a logical and graphical overview, which is used to support Honeywell's automated online contract renewal process.

Provided at no cost for all customers, both contracted and non-contracted, the System Inventory Tool runs in the background and will not impact the control system performance.

After the System Inventory Tool has completed its scan, a .cab file is created and then either your Honeywell technician or the customer uploads the inventory file to the System Inventor Portal. The portal will display the licensed software sourced from Honeywell, shipped hardware sourced from Honeywell, and inventoried asset data collected by the System Inventory Tool.

New in R300.1

- Advanced Solution support on L3
- Additional support for QCS
- Support for Experion PMD
- Collect inventory for all network switches supported by Experion
- Improvements to the diagnostic tools to quickly detect and report on SIT failures (includes SAT and Device Discovery)
- Reworked device discovery
- Progress meter during the collection phase
- Profit Suite (APC) support
- Control Performance Monitor CX support
- Control Performance Monitor standard support
- Profit Blending Suite support
- Profit Movement Suite support
- DynAMo Alarm Management Suite support
- Uniformance Asset Sentinel support
- Matrikon OPC Servers support (see Appendix A for full list)
- Unisim Competency Suite support on L3

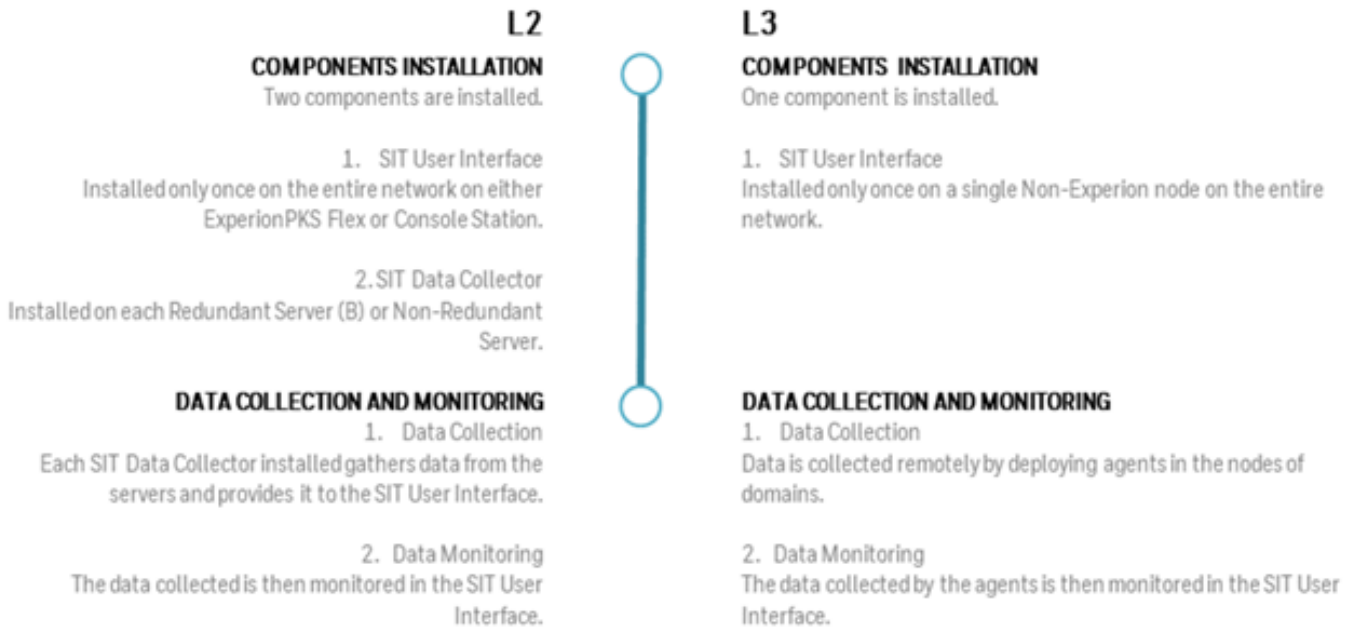
Installation

The System Inventory Tool R300.1 is a standalone installation, and therefore not integrated into the Experion R511 media package.

While the System Inventory Tool can be installed on Level 2 (L2) and Level 3 (L3), the installation and configuration on both levels are independent of each other. As such, users can choose to install it on either or both levels, based on the control system requirements.

Functionality of SIT on L2 and L3

Key features & differences on both levels



Information for System Inventory Tool R230 Users

Users who have installed R230.1, R230.2, or R230.3 versions of the System Inventory Tool should upgrade to R300.1 to ensure they have the latest support from Honeywell, unless they are currently running Experion R3xx.x, which is not supported by SIT R300.1. During the upgrade their current System Inventory Tool configuration will be retained.

Experion Compatibility

SIT Version	Supported Experion Version
R200.1	R301, R310, R400 and R430
R200.2	R301, R310, R400 and R430
R200.3	R301, R310, R400 and R430
R210.1	R3xx.x to R510
R210.2	R3xx.x to R510
R220.1	R3xx.x to R510
R230.1	R3xx.x to R510
R230.2	R3xx.x to R510
R230.3 (SIT patch must be installed on 32bit systems after R230.3 installation)	R400.8 to R511
R300.1	R400.8 to R511

QCS Compatibility

QCS Architecture Version	Experion PKS Layer	System Inventory Tool Release Support
RAE1xx	None	
RAE2xx	None	
RAE3xx	None	
RAE4xx	R101/201/210	No support
RAE5xx	R300/301/310/311	No support
R6xx	R 400.8	R300.1
R7xx	R5xx	R300.1

Appendix A

Matrikon Data Manager
Matrikon Desktop Historian
Matrikon OPC Server for GE Turbines
Matrikon OPC Funnel
Matrikon OPC Security Gateway
Matrikon OPC Server for Allen Bradley
Matrikon OPC Server for APACS Direct
Matrikon OPC Server for BACNet
Matrikon OPC Server for Bailey DCS [Infi 90]
Matrikon OPC Server for Citect
Matrikon OPC Server for Foxboro DCS
Matrikon OPC Server for GDA [ODBC]
Matrikon OPC Server for GE PLCs
Matrikon OPC Server for IEC 61850/61400-25
Matrikon OPC Server for IP21
Matrikon OPC Server for Johnson Controls N2
Matrikon OPC Server for KNX
Matrikon OPC Server for LonWorks LNS
Matrikon OPC Server for MarkV Direct
Matrikon OPC Server for MarkVI Direct
Matrikon OPC Server for Mitsubishi PLCs
Matrikon OPC Server for Modbus
Matrikon OPC Server for Moore APACS (API)
Matrikon OPC Server for Omni Flow Computers
Matrikon OPC Server for Omron
Matrikon OPC Server for OpenBSI
Matrikon OPC Server for ProRAE
Matrikon OPC Server for Provox (Direct)
Matrikon OPC Server for ROC
Matrikon OPC Server for RS3 RNI
Matrikon OPC Server for SCADA DNP3
Matrikon OPC Server for SCADA IEC 60870
Matrikon OPC Server for SCADA Modbus
Matrikon OPC Server for SCADA MOSCAD
Matrikon OPC Server for Siemens PLCs
Matrikon OPC Server for SNMP
Matrikon OPC Server for Vestas
Matrikon OPC Server for Wonderware InSQL (Wonderware Historian)
Matrikon OPC Server for Wonderware Intouch
Matrikon ORB
Matrikon OPC UA Tunneller - UA Proxy Component / UA Proxy
Matrikon OPC UA Tunneller - UA Wrapper Component / UA Wrapper

What is SIT and Why Do You Need It?

Overview

The System Inventory Tool (SIT) provides a comprehensive system inventory documentation solution to support Honeywell's contract renewal process. The tool enables our customers to complete their yearly

contract renewal online through an automated system, better manage risk, prepare for any migrations, and ensure compliance and continuous evolution of their control system.

The SIT collects asset data, which is then hosted in a secure Honeywell data center where the customer can view all their control system asset information (both hardware and software) through the System Inventory Portal. And, best of all, the tool is provided free of charge by Honeywell for all contracted and non-contracted sites and does not require an SESP contract or Assurance 360 service agreement.

Automated Online Contract Renewals and More

The SIT was developed to support online contract renewals. Gone are the days of the laborious task of manually reviewing contract renewal worksheets, trying to track changes via emails and phone calls, and providing results in a timely manner. No more lost notes or questions such as, “What did we do last year?” All updates and notes regarding asset quantities will be captured in the tool and carried forward year over year, making future contract renewals faster and easier. But contract renewals are just once a year—what else can you do with the tool?

Better Management of Risks

With the SIT, you have the ability to see all your control system assets by each MSID in the Honeywell System Inventory portal. With this view, product support status is shown for each asset. Do you know if your control system is using outdated equipment or assets no longer supported by Honeywell? Finding out answers like this is just a mouse click away in the portal.

When you can see all your equipment in a single view via the online portal, you know exactly what hardware and software are running, what is outdated and where improvements could be made—thus better managing risk.

Compliance and Continuous Evolution of Control Systems

With the asset topology feature found in the System Inventory Portal, you’ll have insight into the hardware components in each control system, thus avoiding lengthy delays to gather the right information when the system needs to be supported or expanded.

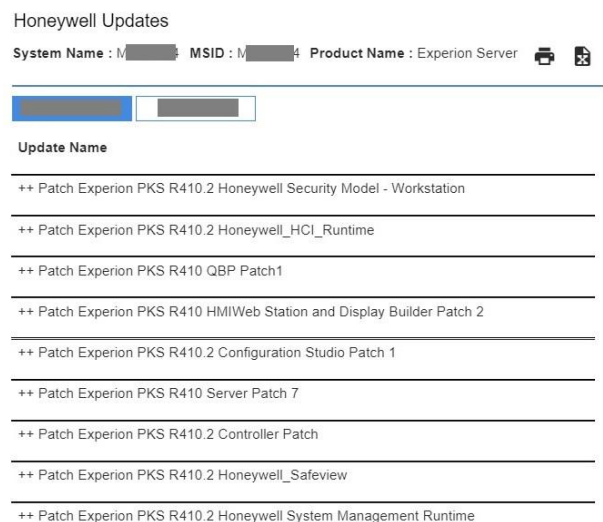
Today, control systems are more complex than ever before and there is limited information on how the different components need to interact. When you can visualize your entire system in one view, you increase awareness that leads to better decision-making.

Migrations

You have a budget for a migration, and in many cases it’s “use it or lose it.” So, how will you know where best to invest in your control system? Can you quickly review every MSID design, topology, and product support status for every asset? If you’ve uploaded your inventory asset data file to the System Inventory Portal, all this and more is just a mouse click away. And did we mention it’s free? That’s right—Honeywell offers this to all our customers at no cost. No contract or service plan of any kind is required.

Quickly Locate Assets

All assets are listed by Site > MSID and user-defined system names, and because each system name you choose is assigned to its respective MSID, finding your systems is easy—even if you don't know the MSID name.



What Can The Collected Asset Data Tell You?

Keeping track of the patches and updates you've installed on your servers and stations can be a time-consuming task. It requires logging into each server or node and checking through the control panel to see which patches and updates have been installed. Now, if you've run the SIT and uploaded your asset inventory file to the portal, just click on the server or console station and a complete list of all installed applications, patches and updates will be displayed in an easy-to-read table. Need to know which version of boot firmware is installed on a C300 controller? Just click on the MSID, select the controller and a table will display everything you need to know. Want even more flexibility? Export the data to an Excel spreadsheet and sort it or create a pivot table for convenient viewing.

What Data Does the Tool Collect?

The tool is designed to capture details of the existing system hardware and software versions, including servers, stations, controllers, I/O modules, node details, installed applications, and switch models.

How Can You View Your Data?

The System Inventory Portal allows customers and certain Honeywell account managers to see their account asset data. Within the portal, you can see all your servers, stations, controllers, nodes, and switch hardware and detailed information about each. Depending on which asset you're viewing, you can see the serial number, F/W, BIOS, installed software, support status, and much more. To access the portal, go to honeywellprocess.com/support and login with the same credentials used when you registered. Not registered? No problem! Registration is free and takes less than a minute. Once you are registered, login and select the Support tab, then select the System Inventory tab.

Series C I/O

System Name : M█████4 MSID : M█████4

IO Link	Name	Model	Slot/Card#	Hardware Revision	Boot FW	App FW	Serial
236IOLINK_1A	DI_HV_23	CC-PDIH01	23A	C	04.01.03	04.01.08	1█████3
236IOLINK_1A	DI_HV_19	CC-PDIH01	19A	C	04.01.03	04.01.08	1█████5
236IOLINK_1A	DO_24B_33	CC-PDOB01	33A	G	04.01.03	04.01.08	1█████1
236IOLINK_1A	DO_24B_32	CC-PDOB01	32A	G	04.01.03	04.01.08	1█████3
236IOLINK_1A	DI_HV_22	CC-PDIH01	22A	C	04.01.03	04.01.08	1█████2
236IOLINK_1A	DO_24B_31	CC-PDOB01	31A	G	04.01.03	04.01.08	1█████8
236IOLINK_1A	DI_HV_25	CC-PDIH01	25A	C	04.01.03	04.01.08	1█████3
236IOLINK_1A	DI_HV_24	CC-PDIH01	24A	C	04.01.03	04.01.08	1█████5
236IOLINK_1A	DI_HV_21	CC-PDIH01	21A	C	04.01.03	04.01.08	1█████7

Who Can See Your Data?

All inventory data is viewable by only the customer, the customer's account manager, and Honeywell GTAC. In the event you call for support, GTAC can quickly get needed information such as F/W version, BIOS version, hardware rev, etc. Nobody else can ever see the data-not even other Honeywell employees.

What Data are Collected?

When you log into the System Inventory Portal, you will see a list of your sites. Select a site and there are three icons: Licensed Software, Shipped Hardware and Inventoried Assets.

Licensed Software	Shipped Hardware	Inventoried Assets
List of all licensed software shipped by Honeywell to the customer. Includes TPS BLDR, EBR, Experion PKS, GUS, PHD, and DOC 3000 licenses.	A complete list of every piece of hardware shipped by Honeywell to the customer, sorted by most recently shipped. Includes product part number, description, serial number, and date shipped.	Comprehensive list of all assets on each control system. Includes servers, stations, controllers, LCN nodes, and switches.

Used by Customers Worldwide

Today, Honeywell has over 900 sites worldwide using the SIT in more than 2,500 control systems. Many customers have reported that the tool is easily installed, runs flawlessly, and that the time saved via the automated contract renewal process eliminated weeks of manual audit work. What used to be a tiresome and lengthy process can now be completed automatically, with 100% accuracy, and in less than a day.

Helpful Links

[System Inventory Tool Download](#)

[System Inventory Tool Portal](#)

[System Inventory Web Portal Training](#)

[Frequently Asked Questions](#)

The System Inventory Tool and Portal are Available at www.honeywellprocess.com/support.

<https://www.honeywellprocess.com/library/marketing/notes/System-Inventory-Tool-What-is-it-and-why-I-should-be-using-it.pdf>

System Inventory Tool: Is it safe to use in my control system?



The [System Inventory Tool](#) (SIT) is a self-service tool that HPS customers install on an Experion Flex or Console Station, along with data collectors on the Experion B Server (or non-redundant node) to collect asset data at Level 1 and Level 2, which is used to support Honeywell’s automated online contract renewal process.

The SIT generates an inventory file (.cab) that either the customer or Honeywell Field Support Specialist uploads to the secure System Inventory Portal where the user can see inventory details in a logical and graphical overview.

This tool is safe for use on your control system. It runs as a low-priority Windows Service Event, which means it will throttle down or even pause if other Windows Events need to take priority. As such, the tool will not put a burden on the control system, nor adversely affect the performance of the network or control system.

The SIT does not collect any sensitive data. No IP addresses or customer information are ever collected. The data collected are strictly related to the assets (e.g., BIOS version, F/W version, model number, serial number, H/W version, and other asset-only related information).

System Inventory Tool Security

-  **Does not collect sensitive data**
No IP addresses, MAC addresses, or any sensitive network information
-  **Cybersecurity**
Secure authentication on HoneywellProcess.com
Enhanced security and support via TLS 1.1 or higher
-  **Honeywell Data Governance team**
Data access highly restricted and protected via
Encrypted two-factor authentication

From January 2018 to February 2019, there was a 56 percent increase in SIT adoption worldwide for contracted sites, with almost 900 sites now using the tool without incident. In fact, many customers

have reported that the tool installation was straightforward, the tool runs without incident, and the time saved via the automated contract renewal process saved them weeks of manual audit work. What used to be a lengthy, rigorous process can now be completed automatically, with 100% accuracy, and in less than a day.

Summary	Contracted Sites			
	Pole	# of sites	# of sites using the tool	% of sites using the tool
AMER	665	514	77.29%	36.42%
APAC	147	68	46.26%	91.84%
EMEA	450	316	70.22%	46.98%
Global	1262	898	71.16%	55.98%

When it comes to the performance impact on a running control system, the following table summarizes typical system configuration CPU usage and time to complete. As you can see, CPU impact is typically in the single-digit percentage, and the time to process data is minimal. Keep in mind that time to

Node type	System configuration	Average additional % CPU used	Time to complete audit	Number of PCs being audited
ESVT – Server B	<ul style="list-style-type: none"> Dell PowerEdge R710 server (8) Processors: Intel(R) Xeon(R) CPU E5620 @ 2.40GHz Speed: 2,394 12 GB RAM 	Negligible	7 minutes 52 seconds to 11 minutes 33 seconds	4 PCs – Server, ACE, Console Station, Flex Station
ESVT - Server A	<ul style="list-style-type: none"> Dell PowerEdge R710 server (8) Processors: Intel(R) Xeon(R) CPU E5620 @ 2.40GHz Speed: 2,394 12 GB RAM 	4.8% – 8.9%	1 minute 40 seconds to 2 minutes 56 seconds	
EST	<ul style="list-style-type: none"> Dell Precision T5500 workstation (4) Processors: Intel(R) Xeon(R) CPU X5570 @ 2.93GHz Speed: 2,926 3 GB RAM 	2.7% – 6.5%	1 minute 23 seconds to 2 minutes 50 seconds	
Flex	<ul style="list-style-type: none"> VMware virtual platform (2) Processors: Intel(R) Xeon(R) CPU X5570 @ 2.67 GHz Speed: 2,666 2 GB RAM 	7.2% - 11.9%	4 minutes to 4 minutes 21 seconds	
ACE-T	<ul style="list-style-type: none"> Dell PowerEdge T610 server (8) Processors: Intel(R) Xeon(R) CPU X5560 @ 2.80GHz Speed: 2,794 4 GB RAM 	0.3% - 1.8%	1 minute 6 seconds to 3 minutes 27 seconds	

process will vary based on the size of the control system; number of nodes; and number of controllers, switches, servers, and stations.

The System Inventory Tool and Portal are available via www.honeywellprocess.com/support
<https://www.honeywellprocess.com/library/marketing/notes/System-Inventory-Tool-Is-it-safe-for-my-control-system.pdf>

System Inventory Tool: Available with No Purchase Required

Available to Experion PKS users with no purchase required, the Honeywell System Inventory Tool is a self-service solution for scanning the inventory details of your entire control system. This solution will enable you to:

- Know your system – view a level of granularity you haven't seen before
- Improve your service experience – every request starts with knowing your system inventory
- Make better decisions – plan migrations, upgrades and maintenance with more clarity

Get started today at <http://www.honeywellprocess.com/support>> System Inventory (requires log-in).

Why it's Important to use the Latest Version of the System Inventory Tool

The latest release of SIT R300.1 was updated with enhancements and fixes to identify assets that were not properly collected in earlier releases.

The SIT is designed to run automatically on a scheduled basis. Thus it is important to collect data on schedule and upload it to the portal to ensure recent asset information. This becomes more important as the team integrates additional tools with the Install Base Database (SIT portal).

The latest SIT can be downloaded [here](#).

System Inventory Tool (SIT) and Experion PKS Compatibility Matrix

Background

The compatibility matrix for Experion PKS and the [System Inventory Tool](#) (SIT) helps customers employ the correct version of the tool based on the version of Experion installed on their control system.

SIT Version	Supported Experion Version
R200.1	R301, R310, R400 and R430
R200.2	R301, R310, R400 and R430
R200.3	R301, R310, R400 and R430
R210.1	R3xx.x to R510
R210.2	R3xx.x to R510
R220.1	R3xx.x to R510
R230.1	R3xx.x to R510
R230.2	R3xx.x to R510
R230.3	R400.8 or newer
R300.1	R400.8 thru 511

HPS Priority Notifications

HPS Priority Notifications are available under “Latest Notifications” in [the Support Community](#). Be sure to check back regularly as new content is continually added in the form of notifications, Be Aware newsletters, Knowledge Base articles and updates.

Recent published notifications include:

Document Title	Product	Rel/Rev	Date Created
PN2017-21B Spurious Fault Error Code 32 reported for Universal Safety IO	Safety Manager, module type FC-RUSIO-3224 & FC-RUSLS-3224	Version 1.4 or lower	11/08/2019
PN2018-10A Universal Safety IO fails with error code 32 or 102	Safety Manager	R140, R145, R150, R151, R152, R153.1, R153.2, R153.3, R153.4, R153.5, R160, R161	11/08/2019
PN2019-24A FTE Comm Failure Between Specific Node Types	Experion PKS; Unit Operations Controller, Experion ELCN, Enhanced Logic Manager Module, Safety Manager SC	Experion PKS R500.X, R501.1, R501.2, R501.4, R510.X, R511.1, Safety Manager SC R200.2, R200.3, R201.1	11/01/2019
SN2019-11-01 01 Malware Protection and Awareness	Safety Manager, Safety Manager SC	R100 to R162, R200 to R201	11/01/2019
PN2019-26 HCILink Application Crash when used with Experion PMD R9XX System	HCILink Application Crash in Experion MX R70X with Experion PMD R9XX System	Experion MX Releases, R700.X, R701.X, R702.X	10/10/2019
PN2018-23B USC Fan Alarm Input Configuration	Safety Manager, Safety Manager SC	R140, R145, R150, R151, R152, R153, R154, R160, R161, R162, R200,	09/30/2019
RAL2019-06 Dell R740XL Honeywell OEM ID Firmware	Honeywell Experion PKS Server – MZ-PCSV65 – Dell R740XL	N/A	09/27/2019

Products Revisions and Support Status

Latest Media Revision	Latest Patch/Update	Functional Release - First Shipment Announcement	Support Status	Software Product Category
Alarm Configuration Manager R321	R321.11	2013-10	Supported	Standalone Software
Alarm Event Analysis R321	R321.5	2013-10	Supported	Standalone Software
Blending and Movement Automation R430.y	R430.4	2014-06	Supported	Software Package
Business Flex R250	R250.2	2016-10	Supported	Standalone Software
Control Performance Monitor R56x	R560.1	2013-03	Supported	Standalone Software
Control Performance Monitor R57x	R570.1	2014-12	Current	Standalone Software
Control Performance Monitor R60x	R601.2	2018-05	Current	Standalone Software
ControlEdge 2020 R14x	R140.1	2017-04	Supported	System Software
ControlEdge 2020 R15x	R151.1	2018-11	Current	System Software
DynAMo Alerts & Notifications (A&N) R200	UA R321.2	2013-10	Current	Standalone Software
DynAMo Documentation & Enforcement (D&E) R200	ACM R321.11	2016-05	Current	Standalone Software
DynAMo Metrics & Reporting (M&R) R200	R202.1	2017-03	Current	Standalone Software
DynAMo Operations Logbook (DOL) R200	R200.1	2017-02	Supported	Standalone Software
DynAMo Operations Logbook (DOL) R211	R211.4	2017-08	Supported	Standalone Software
DynAMo Operations Logbook (DOL) R220	R220.3	2018-06	Supported	Standalone Software
DynAMo Operations Logbook (DOL) R230	R230.1	2019-04	Supported	Standalone Software
DynAMo Operations Logbook (DOL) R230	R230.2	2019-08	Current	Standalone Software
DynAMo Operations Monitoring (DOM) R200	R200.1	2017-02	Supported	Standalone Software
DynAMo Operations Monitoring (DOM) R211	R211.4	2017-08	Supported	Standalone Software
DynAMo Operations Monitoring (DOM) R220	R220.3	2018-06	Supported	Standalone Software
DynAMo Operations Monitoring (DOM) R230	R230.1	2019-04	Supported	Standalone Software
DynAMo Operations Monitoring (DOM) R230	R230.2	2019-08	Current	Standalone Software
Experion Backup and Restore R50x	R500.1	2017-04	Supported	Software Package
Experion Backup and Restore R50x	R501.1	2017-04	Supported	Software Package
Experion Backup and Restore R50x	R501.2	2017-04	Current	Software Package
Experion HS R41x	R410.1	2013-07	Supported	System Software
Experion HS R43x	R430.1	2015-03	Supported	System Software
Experion HS R50x	R500.3	2017-08	Supported	System Software
Experion HS R51x	R510.2	2018-09	Supported	System Software
Experion HS R51x	R511.1	2018-09	Current	System Software
Experion LS R30x	R300.1	2009-11	Supported	System Software
Experion LS R40x	R400.1	2011-06	Current	System Software
Experion LX R11x	R110.2	2014-09	Supported	System Software
Experion LX R12x	R120.1	2015-03	Supported	System Software
Experion LX R50x	R500.2	2017-11	Supported	System Software
Experion LX R51x	R510.2	2018-11	Current	System Software

Experion MX CD Controls R61x	R610.1	2013-02	Supported	Software Package
Experion MX CD Controls R70x	R701.1	2017-03	Supported	Software Package
Experion MX CD Controls R70x	R702.1	2017-03	Supported	Software Package
Experion MX CDMV Controls R61x	R610.1	2013-02	Supported	Software Package
Experion MX CDMV Controls R70x	R701.1	2017-03	Supported	Software Package
Experion MX CDMV Controls R70x	R702.1	2017-03	Current	Software Package
Experion MX IDP Scout R61x	R610.1	2013-02	Current	Standalone Software
Experion MX IntelliMap R61x	R610.1	2013-02	Current	Standalone Software
Experion MX MD Controls R61x	R611.1	2013-02	Supported	Software Package
Experion MX MD Controls R70x	R701.1	2017-03	Supported	Software Package
Experion MX MD Controls R70x	R702.1	2017-03	Supported	Software Package
Experion MX MDMV Controls R61x	R611.1	2013-02	Supported	Software Package
Experion MX MDMV Controls R70x	R701.1	2017-03	Supported	Software Package
Experion MX MDMV Controls R70x	R702.1	2017-03	Current	Software Package
Experion MX/MXProLine R61x	R615.3	2013-02	Supported	System Software
Experion MX/MXProLine R70x	R701.2	2017-03	Supported	System Software
Experion MX/MXProLine R70x	R702.2	2017-03	Current	System Software
Experion PKS R43x	R431.4	2014-03	Supported	System Software
Experion PKS R43x	R431.5	2014-03	Supported	System Software
Experion PKS R43x	R432.1	2014-03	Supported	System Software
Experion PKS R43x	R432.2	2014-03	Supported	System Software
Experion PKS R50x	R501.4	2017-01	Supported	System Software
Experion PKS R50x	R501.6	2017-01	Supported	System Software
Experion PKS R51x	R510.1	2018-08	Supported	System Software
Experion PKS R51x	R510.2	2018-08	Supported	System Software
Experion PKS R51x	R511.1	2018-08	Supported	System Software
Experion PKS R51x	R511.2	2018-08	Current	System Software
Fail Safe Controller R71x	R710.9	2011-07	Supported	System Software
Fail Safe Controller R80x	R801.3	2014-10	Current	System Software
Field Device Manager R51x	R511.1	2019-09	Current	Standalone Software
Field Device Manager R50x	R501.4	2017-03	Supported	Standalone Software
Field Device Manager R50x	R500.1	2017-03	Supported	Standalone Software
Field Device Manager R43x	R430.1 (Patch 1)	2012-06	Supported	Standalone Software
Honeywell Trace R120	R120.1	2017-04	Supported	Standalone Software
Honeywell Trace R121	R121.1	2018-01	Supported	Standalone Software
Honeywell Trace R130	R130.1 Patch 2	2019-03	Current	Standalone Software
Immersive Competency	R100.1	2018-07	Current	Standalone Software
Integrated Automation Assessment R15x	R150.1	2018-02	Supported	Standalone Software
Integrated Automation Assessment R16x	R160.1	2019-12	Current	Standalone Software
Intuition Executive R22x	R220.1	2014-05	Supported	Standalone Software
Intuition Executive R23x	R230.1	2015-07	Current	Standalone Software
Intuition KPI R11x	R110.1	2014-05	Supported	Standalone Software
OptiVision R53x	R531.1	2012-01	Supported	Standalone Software
OptiVision R54x	R540.1	2014-08	Supported	Standalone Software
OptiVision R54x	R541.1	2015-12	Current	Standalone Software

PlantCruise R10x	R100.3	2013-07	Supported	System Software
PlantCruise R11x	R110.2	2014-09	Supported	System Software
PlantCruise R12x	R120.1	2015-03	Supported	System Software
PlantCruise R50x	R500.1	2017-11	Supported	System Software
PlantCruise R51x	R510.2	2018-11	Current	System Software
PMD R83x	R831.1	2015-02	Supported	System Software
PMD R90x	R900.2	2017-02	Supported	System Software
PMD R91x	R910.2	2018-12	Current	System Software
Predict-Amine	R4.0	2017-09	Supported	Standalone Software
Predict-Crude	R2.0	2015-09	Supported	Standalone Software
Predict-O&G	R7.1	2018-09	Supported	Standalone Software
Predict-Pipe	R5.0	2018-12	Supported	Standalone Software
Predict-RT	R140	2019-06	Supported	Standalone Software
Predict-SA	R2.0	2014-12	Supported	Standalone Software
Predict-SW (Sour Water)	R4.0	2018-12	Supported	Standalone Software
Procedure Analyst R41x	R410.0	2013-01	Supported	Standalone Software
Procedure Analyst R43x	R430.1	2015-06	Supported	Standalone Software
Procedure Analyst R50x	R500.2	2017-03	Current	Standalone Software
Process Safety Analyzer	R115	2017-06	Current	Standalone Software
Profit Blending and Movement R431.y	R431.4	2015-06	Supported	Software Package
Profit Blending and Movement R500.y	R500.2	2016-11	Supported	Software Package
Profit Blending and Movement R501.y	R501.2	2018-05	Supported	Software Package
Profit Blending and Movement R510.y	R510.1	2019-09	Current	Software Package
Profit Suit R41x	R411.1	2013-05	Supported	Standalone Software
Profit Suit R43x	R431.1	2014-12	Supported	Standalone Software
Profit Suit R44x	R441.1	2017-04	Supported	Standalone Software
Profit Suit R50x	R500.1	2018-10	Current	Standalone Software
Quality OptiMiser R540x	R540.1	2010-10	Supported	Standalone Software
Quality OptiMiser R550x	R550.1	2012-12	Supported	Standalone Software
Quality OptiMiser R550x	R550.2	2014-07	Current	Standalone Software
Quality OptiMiser for QCS R550x	R550.2	2014-12	Current	Standalone Software
Risk Manager R170	R170.1 Patch 3	2018-03	Supported	Standalone Software
Risk Manager R171	R171.1	2019-03	Current	Standalone Software
RTU2020 R11x	R110.1	2015-06	Supported	System Software
RTU2020 R12x	R120.1	2016-05	Supported	System Software
Safety Historian R20x	R201.1	2014-03	Current	System Software
Safety Manager R14x	R146.2	2010-05	Supported	System Software
Safety Manager R15x	R153.7	2012-04	Supported	System Software
Safety Manager R15x	R154.1	2012-04	Supported	System Software
Safety Manager R16x	R162.2	2014-10	Current	System Software
Safety Manager SC R20x	R201.1	2018-08	Current	System Software
Secure Media Exchange (SMX)	R102.3	(blank)	Current	Standalone Software
Socrates	R10.0	2019-03	Supported	Standalone Software
Symphonite Integration and Analytics R200.1	R200.2	2017-07	Supported	Standalone Software
Symphonite Integration and Analytics R201.1	R201.1	2019-09	Current	Standalone Software

Symphonite Production Accounting & Reconciliation	R200.1	2015-08	Supported	Standalone Software
Symphonite Production Accounting & Reconciliation	R201.2	2015-08	Supported	Standalone Software
Symphonite Production Accounting & Reconciliation	R210.1	2019-02	Current	Standalone Software
Symphonite RPMS	R510.1.8	2018-12	Current	Standalone Software
System Inventory Tool R21x	R210.2	2016-11	Supported	Standalone Software
System Inventory Tool R22x	R220.1	2017-09	Supported	Standalone Software
System Inventory Tool R23x	R230.1	2018-05	Supported	Standalone Software
System Inventory Tool R23x	R230.2	2018-05	Supported	Standalone Software
System Inventory Tool R23x	R230.3	2018-05	Supported	Standalone Software
System Inventory Tool R30x	R300.1	2019-09	Current	Standalone Software
System Performance Analyzer	R120.1	2019-01	Current	Standalone Software
TPN (AM) CLM R36x	R360.12	2002-01	Supported	System Software
TPN R685.x	R685.4	2016-06	Supported	System Software
TPN R686.x	R686.4	2016-10	Supported	System Software
TPN R687.x	R687.4	2018-02	Supported	System Software
TPN R687.x	R687.5	2018-02	Supported	System Software
TPN R688.x	R688.2	2019-01	Supported	System Software
TPN R688.x	R688.3	2019-01	Current	System Software
TPS (APP) CLM R20x	R200.2	2012-07	Supported	System Software
TPS Builder R43x	R430.1	2016-05	Supported	Software Package
TPS R42x	R421.3	2009-11	Supported	System Software
Uniformance Asset Sentinel R51x	R510.1	2017-04	Supported	Standalone Software
Uniformance Asset Sentinel R51x	R511.2	2017-10	Supported	Standalone Software
Uniformance Asset Sentinel R52x	R520.1	2018-12	Supported	Standalone Software
Uniformance Asset Sentinel R52x	R520.2	2019-07	Current	Standalone Software
Uniformance Executive R31x	R311.1	2018-03	Current	Standalone Software
Uniformance Insight R11x	R110.1	2017-10	Supported	Standalone Software
Uniformance Insight R20x	R200.1	2018-06	Supported	Standalone Software
Uniformance Insight R21x	R210.1	2015-08	Current	Standalone Software
Uniformance KPI R12x	R121.1	2017-05	Supported	Standalone Software
Uniformance KPI R13x	R130.1	2018-03	Current	Standalone Software
Uniformance PHD R32x	R321.1	2015-03	Supported	Standalone Software
Uniformance PHD R34x	R340.1	2017-10	Supported	Standalone Software
Uniformance PHD R40x	R400.1	2019-06	Current	Standalone Software
Uniformance Process Studio R32x	R322.2	2016-09	Current	Standalone Software
UniSim Competency Suite	R450.1	2016-11	Supported	Standalone Software
UniSim Competency Suite	R451.1	2016-11	Supported	Standalone Software
UniSim Competency Suite	R452.1	2016-11	Supported	Standalone Software
UniSim Competency Suite	R460.1	2018-04	Supported	Standalone Software
UniSim Competency Suite	R461.1	2019-01	Current	Standalone Software
UserAlert R321	R321.2	2013-10	Supported	Standalone Software
Web Order Services 54x	R540.1	2014-08	Current	Standalone Software

Note: Software releases not listed in the table are in “Phased Out” lifecycle status. The HPS Product Support Guide for Control, Safety and Monitoring Systems is available for download [here](#).

Only Latest and Latest-1 patches/updates are supported by GTAC at the defined support level for the software functional release.

Definitions:

“Software Package” means any HPS software product developed for the specific functional release of system software.

“Standalone Software” means any HPS software product developed for independent operation from a system software functional release.

“System Software” means machine-readable data and executable programs used to define the functionality of the HPS control system and standard hardware products, but does not include firmware, operating system, application software or other software products.