

WinPADS LIS-100

Parameter and readout software for data loggers and volume correctors



Applications

The WinPADS LIS-100 series is used in connection with a PC to program and read out ELSTER LIS-100 volume correctors and data loggers.

Brief information

The WinPADS LIS-100 consists of specific to each device WINDOWS programs, with which it is possible to set the parameters and read out the data from DS-100/A/B/V2 data loggers and from the data logger functions incorporated in EK-88 / 87 / 86 / 90 volume correctors.

Set up

All of the data necessary for the set up of the data logger functions can be input via the local interface as required. This data includes such things as the registration interval or the identification numbers necessary for the system connection (WinLIS) such as the customer and meter serial numbers.

Remote parameter settings

If, in the course of time, it is necessary to change any of the settings for the data logger functions in the devices, it is also possible to do this via remote data transfer with the aid of a modem without having to go to the station (with the exception of parameters used for official purposes).

Display of process data

The current process data for the EK-88 and EK-87 volume correctors, e.g. the current values for Q_b and Q_n or the gas pressure can be displayed either via the local serial interface or also via a connected modem in the form of a data block. This means that it is possible to obtain a precise analysis of the metering process and the ensuing volume correction process if required.

Readout of archive data

With the aid of the readout function, the archives of all of the volume correctors (with integrated registration) and data loggers can be read out and transferred. This can be done both via the local serial interface and via remote data transfer. The data can then be further processed with the WinLIS readout software.

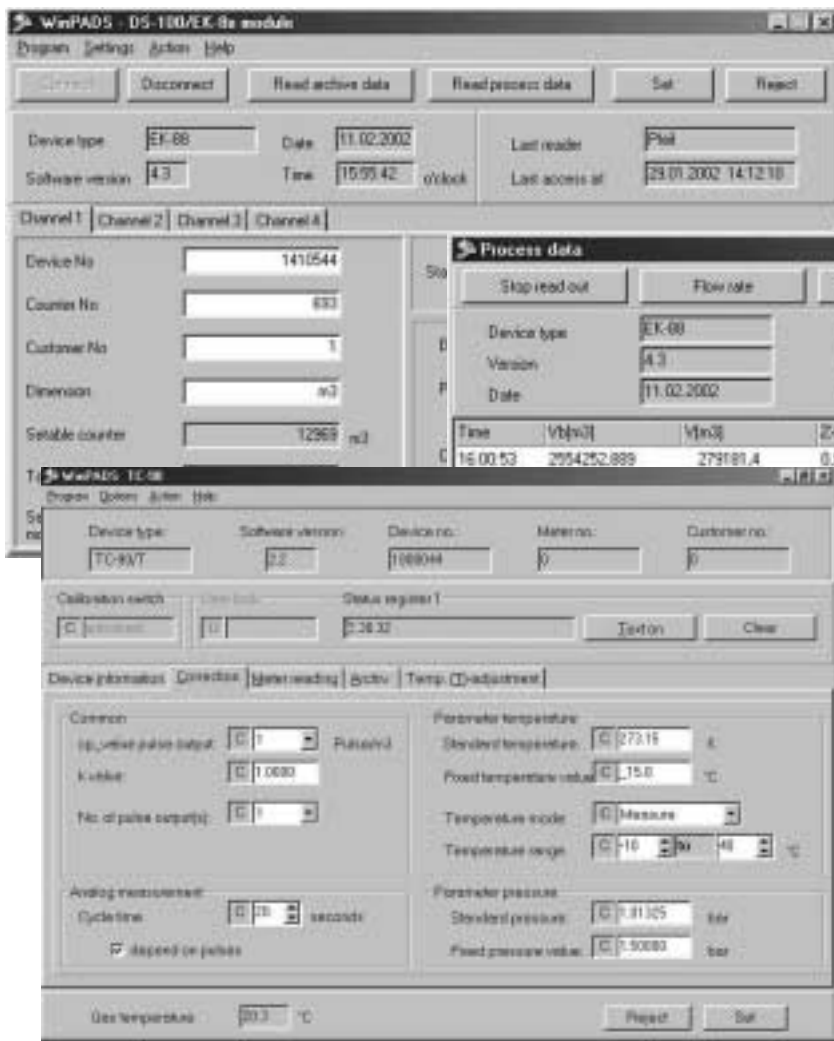
For routine readouts of the archive data the AS-200 mobile readout device can also be used as an alternative to a PC with the WinPADS LIS-100 software.

The WinCOMS control centre software (together with the LIS-100 readout module) also enables a fully-automatic remote meter readout.

Main features

- **Parameter settings for data loggers and data logger functions incorporated in volume correctors**
- **Settings for identification data**
- **Display of current status**
- **Display of status registers**
- **Readout of archive data via serial interface or remote data transfer**
- **Display of current process data from EK-87 and EK-88 volume correctors, both locally and remotely**
- **Simple installation and operation**

Example of applications



Programming the data logger function of an EK-87

Printout of a process data block of an EK-88

Settings for a TC-90/T temperature corrector

System requirements

Pentium I, 90 MHz, 64MB RAM

- 4 MB memory
- Windows 95/98/ME, Windows NT/2000
- One free serial interface for a KD-100/PS2 readout cable
- Either an internal or external Modem (analogue, ISDN, GSM)

Order information

Software			
Device	System	Software*	Order number
DS-100/x, EK-8x, EK-90	LIS-100	WinPADS100-DSEK	73017250
EK-90	LIS-100	WinPADS100-TC	73017251

* Download unter <http://www.elster.com>

Accessories			
Device	System	Description	Order number
KD-100/PS2	Any	Direct readout cable	73015152

Contact partners

Europe, Africa, Near & Middle East
 ELSTER Handel GmbH
 Steinern Straße 19-21
 55252 Mainz-Kastel, Germany
 Phone +49 6134 605-0
 Fax +49 6134 605-223

North & Latin America
 American Meter Company
 300 Welsh Road, Building One
 Horsham, PA 19044, USA
 Phone +1 215 830 1800
 Fax +1 215 830 1890

Asia, Pacific, Australia, New Zealand
 ELSTER AG
 Singapore Representative Office
 80 Marine Parade Road
 # 09-04 Parkway Parade
 Singapore 449269
 Phone: +65 -2477728, Fax: +65 -2477729

www.elster-amco.com

9530 PD EN 01 LIS-100