

# HONEYWELL SYSTEM INTEGRATOR TECH UPDATES



Submit a request to  
[SIAssist@honeywell.com](mailto:SIAssist@honeywell.com)

Access or [create](#) an account in  
**CHAMP**



## HIGHLIGHTS

### Technical Update Newsletter

The **Technical Update Newsletter** is published on a quarterly basis. This will provide updates about the Modular Systems product portfolio and the System Integrator Program. Below you will also find the important points of contact that can help you resolve your issues.

**System Integrators Assist** (SIAssist) is set up to support SIs globally. Technical and P&E Support will be provided to **Authorized SIs** during Pre-Bid, Post-Bid and on Ongoing basis. The SIAssist team has expertise in executing projects in various verticals / domains and applications. You can reach out directly to the expert technical team at [SIAssist@Honeywell.com](mailto:SIAssist@Honeywell.com) for your various needs during the selling and execution of projects.

This year, SIAssist completed more than 50 requests by end of March 2023 and provided support to more than 25 System Integrators.

**P&E initiative** is progressing well, so far 8 P&E requests have been served in Q1-2023. Under this initiative the SIAssist team will support various types of Modular Systems proposals, ranging from small to large scale.



## Digital University

Digital University is a Honeywell Process Solutions new training platform primarily dedicated to the Channel Partners registered for CHAMP. Digital University contains HPS product and solution trainings developed to elevate the technical capabilities of the Channel Partners and it is designed to grow with new and refreshed content.



Refer more details in Product Update section



## PRODUCT UPDATES

### ControlEdge™ PLC

#### ControlEdge™ R174 Release – Enhanced connectivity options, IO diagnostics, datalogging features now available

Honeywell's advanced Programmable Logic Controller (PLC) improves control performance while offering greater flexibility and lowering costs. The ControlEdge PLC connectivity story improved further with enhancements added in R174 enabling more direct access to cloud-based applications for visualization and analytics, reduced gateways, more data storage features and easier maintenance resulting in reduced cost and risk. The new features include:



- **Added IO variety with native connectivity to MasterLogic IO family including built-in diagnostics:**
  - DHCP (Dynamic Host Configuration Protocol) support in ControlEdge Builder for automatic IP address configuration of MasterLogic EtherNet/IP IO adapters
  - Hot Swap of IO modules for online removal and insertion
  - Hardware Diagnostics status of ML IO modules visible in ControlEdge Builder
- **Improved Network support for IIoT Applications like Cloud dashboards, Remote monitoring, and Edge Analytics through**
  - MQTT Protocol enhancement:
    - Store and Forward function (Event storage in buffer and backfill of history to host such as SCADA)
    - DNS (Domain Name System) based addressing for broker URL addresses
    - Multi-Gateway (Static Routing) setting for PLC Ethernet ports Eth1 and Eth2
- **Redundant Universal IO with added HART functionality**
  - UIO connected HART Device diagnostics/ data can now be viewed on FDM and accessed through ControlEdge Builder
- Enhanced remote communications for SCADA telecontrol applications in electrical power systems with support for IEC60870-5-104 outstation, especially benefitting regions like Middle East and Europe

- Datalogging functionality to record data locally for standalone or as a backup-data source to a Historian or SCADA
  - Variables can be logged (at multiple time rates) with timestamp and stored in controller flash/ SD card and retrieved as .csv files for use in reporting, troubleshooting etc.

## Safety Manager SC

The latest release R212 is a functional release adding the following functional enhancements:

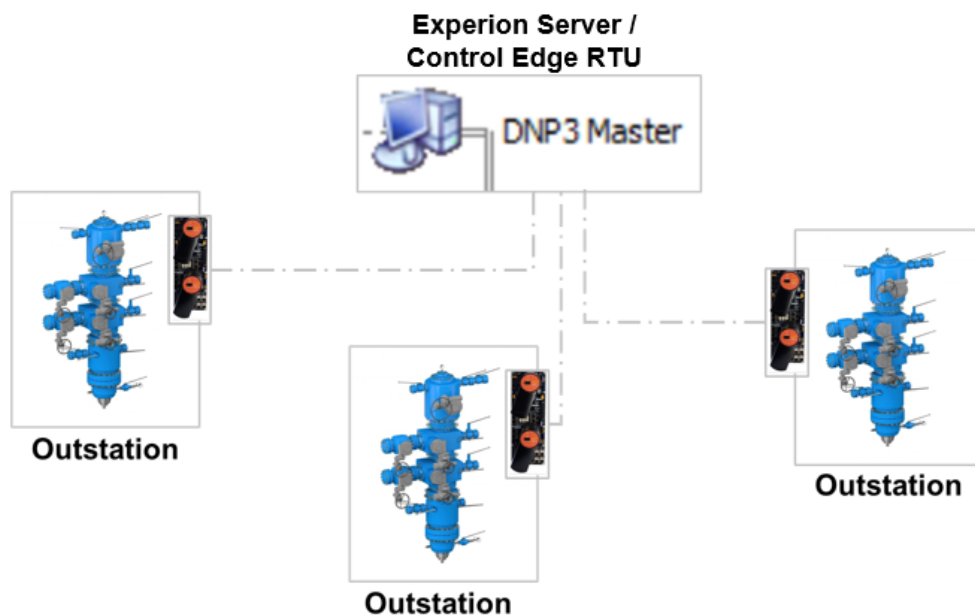
### New controller module – FC-SCNT02

- The FC-SCNT02 module can replace the FC-SCNT01 module online.
- The FC-SCNT02 module can be used as spare part for the FC-SCNT01 module
- The FC-SCNT02 module will function same as the FC-SCNT01 module.
- The FC-SCNT02 module will function with the other FC-SCNT01 module in the redundant SMSC Controller.
- The FC-SCNT02 is supported from Safety Manager SC release R200.2 and higher.



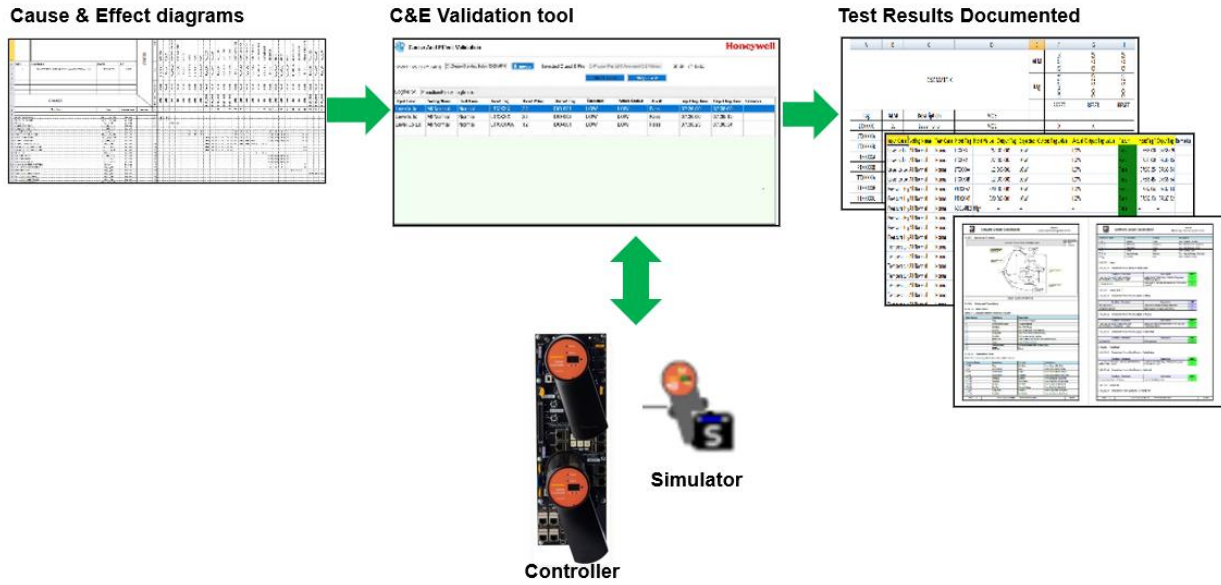
### DNP3 Protocol Outstation support:

- DNP3 protocol available in R212.
- New controller module (FC-SCNT02) is required.
- Safety Manager SC can act as an Outstation.
- Experion Server or Control Edge RTU can act as an DNP3 Master.
- DNP3 protocol is a licensed feature in Safety Builder



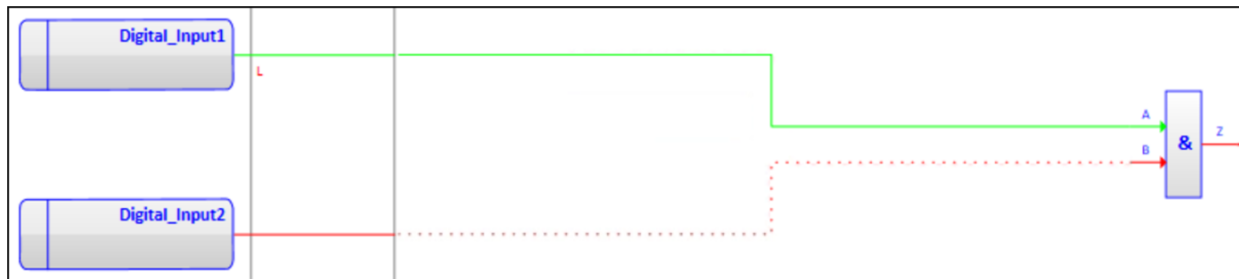
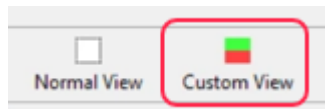
**Cause & Effect validation tool:**

- Automated validation between C&E diagrams and Logics running in the Controller or Simulator
- Available for Honeywell project teams and customers.
- Save time and cost during FAT and commissioning.



**Safety builder enhancements**

- Enhanced Logic Online view for better troubleshooting
  - Normal view
  - Custom view



## Safety Manager SC R212 licensing

- Scaled Licenses for DNP3 protocol
  - When the DNP3 protocol is used a scaled license is required
  - Depending on the number of outstations in a project the following license is required:
    - ✓ Small License – 0 – 50 outstations
    - ✓ Medium License – 51 – 250 outstations
    - ✓ Large License – 251 > outstations

Model Number	Description
FS-SC-DNP3-S	SMSC DNP3 OUTSTATION SMALL LICENSE
FS-SC-DNP3-M	SMSC DNP3 OUTSTATION MEDIUM LICENSE
FS-SC-DNP3-L	SMSC DNP3 OUTSTATION LARGE LICENSE

## R212 Cause & Effect validation tool

- Licenses for Cause & Effect validation tool
  - The Cause & Effect Validation tool R100.1 performs cause and effect validation by using data entered by the user and retrieving data from the customer Safety Builder application and connecting to the Off-Process Safety Controller.

Model Number	Description
FS-CNE-R100	SAFETY CAUSE & EFFECT TEST TOOL
FS-CNE-R100E	SAFETY C&E TOOL ELECTRONIC DOWNLOAD

## Honeywell Variable Frequency Drives

Honeywell VFD is designed with application support in mind, standard & hi-accuracy control

- MVS100 helps improve the performance of mechanical devices and equipment with a power PID, STO (Safety Torque Off)
- MVH100 delivers energy savings in industrial fan, pump and water treatment applications, covering high ratings up to 500kW, with energy saving (up to 30%)



- MVIS7 is a high-performance standard drive with precise closed-loop control of PID, precise control and advanced technology

## MasterLogic PLC

Key features of new update for MasterLogic PLC:

- Smart Remote IO solution to integrate with client system,
- Robust support to integrate and replace IO modules of competitors for high performance applications based on MasterLogic PLC
- Provides three options of networking, UTP, Fiber Optic (Single mode), mixed ports
- Support DHCP, ML I/O adapter will get IP address from DHCP server or client system
- Support Hot Swap, ML200 allows to replace modules on process
- Support Dual Power, ML200 supports dual power for redundancy in one rack
- Support serial interface modules to communicate with devices(slaves)
- support a wide protocol for interfaces

## MasterLogic PLC 200

- Enabling Asset Management for Redundant IO Systems with HART support, COM/DTM such as ML200 + FDM
- Support HART communication with slave devices in the Redundant ML200
- Enhanced Protocols, SNMP, OPCUA, Ethernet/IP, DHCP



## MasterLogic 50

- Provides IO modules with lower cost
- Provides Weighing module, Load-cell
- Support a wide protocol for interfaces, discrete control-EtherCAT, CANopen, Ethernet/IP, Modbus

## Digital University

Honeywell has recently reorganized course content, added new courses, and will continue to update the offerings to provide with a wider range of topics and learning opportunities.

With our commitment to deliver the best possible learning experience, we're confident that these updates will take your education to the next level.

Visit Digital University today and explore the new and improved course platform.

Product	Training Description	Duration
ControlEdge PCD	Fundamentals, first connect, basic configuration and programming, communications between controllers, display creation	2h
ControlEdge PLC	First connect, basic software configuration and programming, communications between controllers and Experion integrations	2h
ControlEdge RTU	First connect, basic software configuration and programming, communications between controllers and Experion integrations	2.5h
ControlEdge UOC	Basic and advanced software configuration and programming	2h
Series8 C300	Basic and advanced software configuration and programming	1h
Safety Manager SC	Fundamentals, first time software configuration and programming, integration with Experion.	2h
Honeywell VFDs	Fundamentals, how to select and use software	0.5h
Experion HS	Fundamentals, installation, display creation, controller integrations, historization and batch processing.	5h
Experion LX	Fundamentals, installation, display creation, controller integrations, historization and batch processing.	6h
Experion LX Webinars	Webinars featuring capabilities, demonstration included	6h

Go on the HPS website [process.honeywell.com](http://process.honeywell.com) > Sign In > SIGN IN TO MY HONEYWELL and enter your credentials > Select [Channel Portal](#) > Select [Digital University \(Training Platform\)](#) from the CHANNEL HOME QUICK LINKS menu located on the left side of the CHAMP homepage to get to the Digital University home page.

Watch this [QUICK DEMO VIDEO](#) for a quick tour!



## PROGRAM UPDATES

### Demo Systems

Demo applications are designed and developed for various applications and for products like Experion® LX/C300, Safety Manager SC, ControlEdge™ HC900, ControlEdge™ PLC, ControlEdge™ RTU, ControlEdge™ UOC, Experion® PPC.

These are available in three packages:

- Integrated Demo
- ICSS Demo
- Individual Demo.

These demos support you in demonstrating and training customers on the Modular Systems portfolio. The applications and details are available with the SIAssist team. For more information, please contact [SIAssist@Honeywell.com](mailto:SIAssist@Honeywell.com).



## KNOWLEDGE ARTICLE

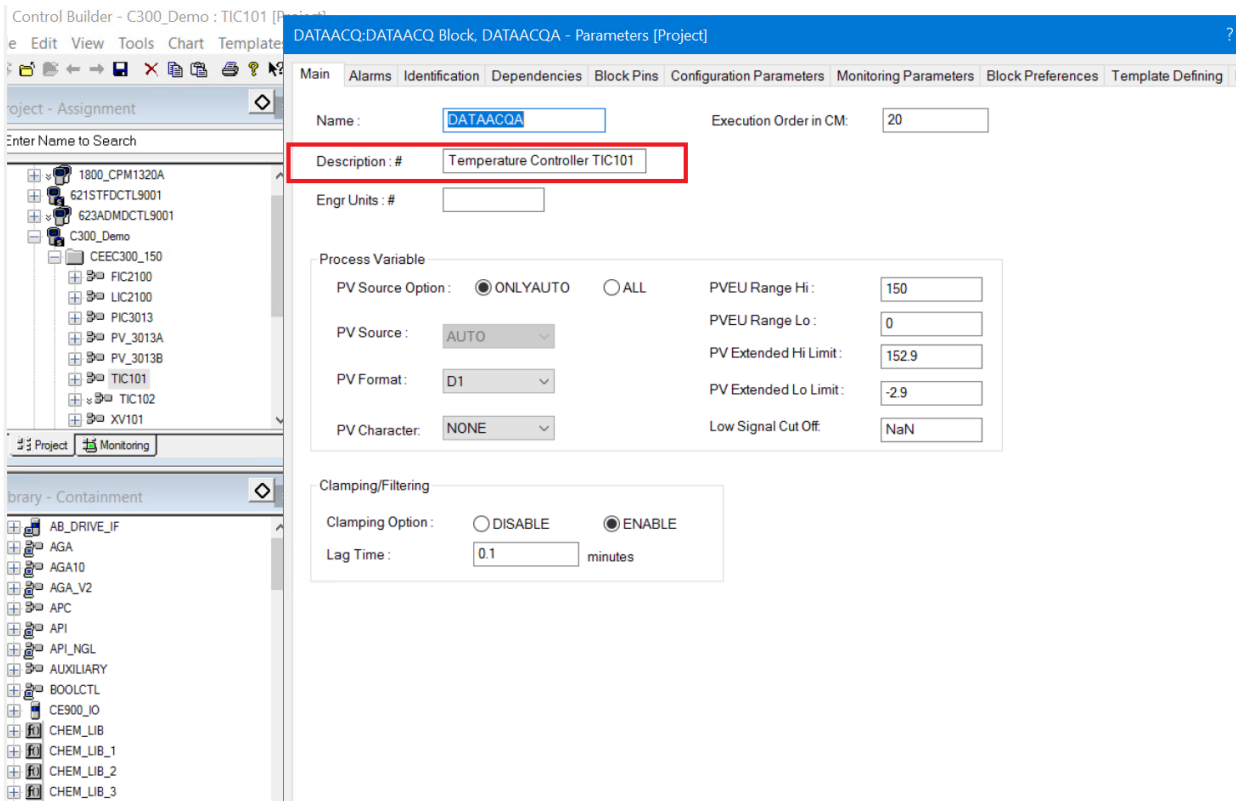
### **Configuration of Alarm in Control builder**

This is applicable for Experion LX/C300. Please note below steps for configuring the alarms in Control Builder tool.

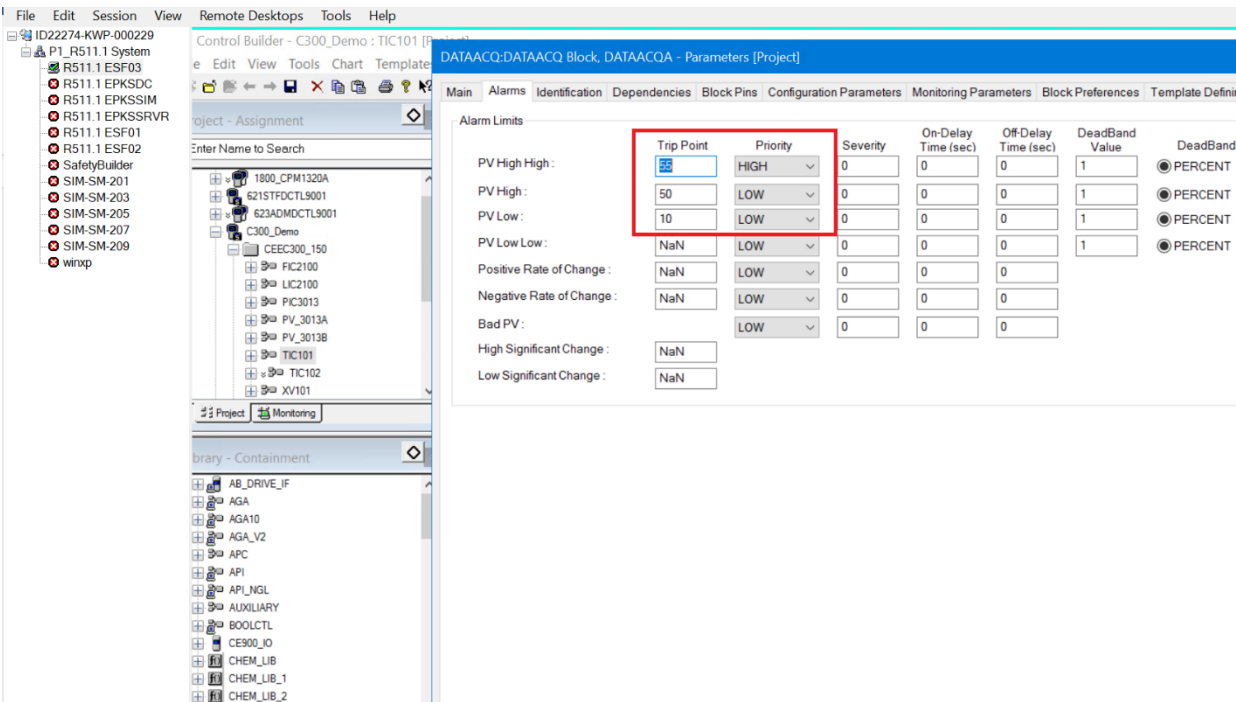
Open the Control Module in the Control Builder.

**In the DATAACQ block, open the Main Tab. Write the description**

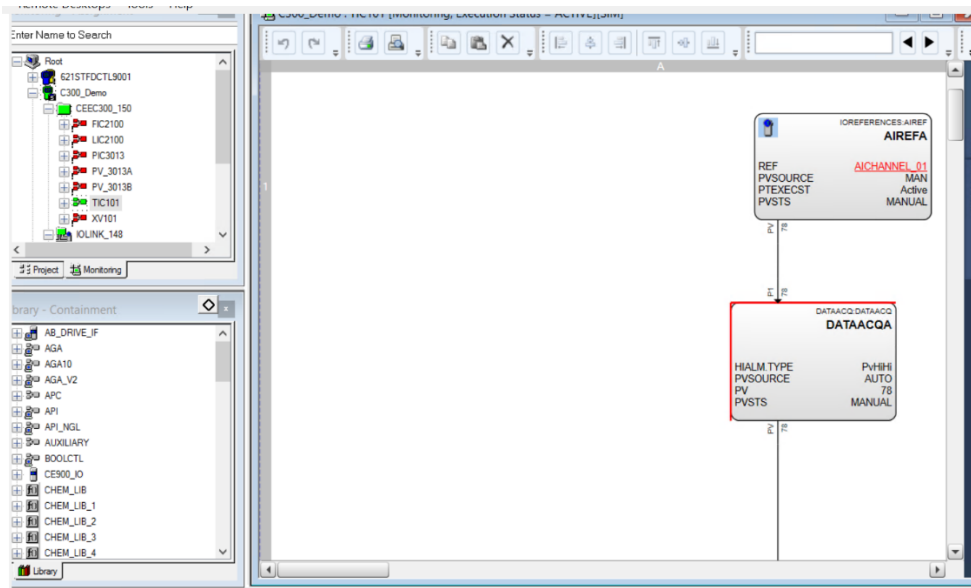




In the Alarms Tab, please set the Trip Point and its Priority.



Download the Control Module. CM will appear like below snap shot in monitoring mode.



On Station, in Alarms Window the Alarms will appear like indicated in below snap.

Alarms								
Location		View: (all alarms)		Clear All Filters		Reset View		
Date & Time	Location Tag	Source	Condition	Priority	Description	Trip Va...	Live Va...	U
3/7/2023 7:33:45	demo	TIC101	PVLOW	L 00	Temperature Controller TIC101	9.92	8.01	
3/7/2023 7:22:45	demo	TIC101	PVHIHI	H 00	Temperature Controller TIC101	78.00	8.01	
3/7/2023 7:22:45	demo	TIC101	PVHIGH	L 00	Temperature Controller TIC101	78.00	8.01	
3/7/2023 7:22:45	demo	TIC101	BADCTL	L 00		NaN	8.01	
5/24/2022 11:02:42	demo	FIC2100	BAD PV	L 00		NaN	??	
5/24/2022 11:02:42	demo	FIC2100	BADCTL	L 00		NaN	??	
5/24/2022 9:50:21	demo	LIC2100	BAD PV	L 00		NaN	??	
5/24/2022 9:50:21	demo	LIC2100	BADCTL	L 00		NaN	??	
5/24/2022 9:41:22	demo	PIC3013	BAD PV	L 00		NaN	??	
5/24/2022 9:41:22	demo	PIC3013	BADCTL	L 00		NaN	??	
5/24/2022 8:17:22	Unassigned Items	04_M1_WGT	PVLOLO	U 00		19.63	??	
5/24/2022 8:16:52	Unassigned Items	04_M1_WGT	PVLOW	H 00		39.63	??	
5/24/2022 8:09:34	Unassigned Items	04_M1_WGT	PVHIGH	H 00		60.03	??	
5/23/2022 15:10:44	demo	TIC101	BAD PV	L 00		NaN	8.01	
4/27/2022 7:39:49	demo	04_TIC101A	BADCTL	L 00		NaN	??	

Unacknowledged alarms: 15  
 Acknowledged alarms: 0  
 Shelved alarms: 0 of 0  
 Suppressed alarms: 0 of 0

Silence    Quick Shelve    Shelve...    Unshelve Alarm  
 Pause    Resume    Acknowledge Pag

Level of escalation	Escalation Timeline	GES Escalation Contact	Regional / Pole Leaders Contact	SI Program Contact
1	2 Days	<a href="#">Mukesh Chaudhari</a>	Regional Product Business Leader	N/A
2	4 Days	<a href="#">Piyush Chaturvedi</a>	Regional Business Leader	<a href="#">Swapnil Adkar</a>
3	6 Days	<a href="#">Dipankar Rautray</a>	Pole General Manager	<a href="#">Andrew Brodie</a>



**[Swapnil Adkar](#)**  
Sr. BDM Global SIs



**[Mukesh Chaudhari](#)**  
Sr. Systems Engineer Supervisor

### MODULAR SYSTEMS TECHNICAL SOLUTION CONSULTANTS

North EU <a href="#">Waqar Amin</a>	South EU <a href="#">Maurro Vaccarino</a>	Canada <a href="#">Dumar Jaramillo</a>	USA <a href="#">Bob Kotoski</a>	South AMER <a href="#">Raul Agundiz</a>
India <a href="#">Bhavin Patel</a>	China <a href="#">XueYong Shi</a>	META <a href="#">Nikhilesh Muraleedharan</a>	RoAP <a href="#">Mohd Zulfadli Hamzah</a> <a href="#">Dicky Suryapranatha</a>	

Honeywell © 2023. All rights reserved.  
This Newsletter is produced for Honeywell System Integrators only and not for further distribution.