

HONEYWELL SYSTEM INTEGRATOR TECH UPDATES



Submit a request to
SIAssist@honeywell.com

Access or [create](#) an account in
CHAMP



HIGHLIGHTS

Technical Update Newsletter

The **Technical Update Newsletter** is published on a quarterly basis. This will provide updates about the Modular Systems product portfolio and the System Integrator Program. Below you will also find the important points of contact that can help you resolve your issues.

Like last year, we have initiated the **2023 System Integrator Organization Competency Survey** on 29-Jun-23 and concluded on 18-Oct-23. This is being conducted to understand the SI organization's expertise across different verticals and Honeywell Modular Systems. Based on this survey, the SI organization will receive industry and product badges as a recognition of its expertise. Each badge will be valid for 1 year.

System Integrators Assist (SIAssist) is set up to support SIs globally. Technical and P&E Support will be provided to **Authorized SIs** during Pre-Bid, Post-Bid and on Ongoing basis. The SIAssist team has expertise in executing projects in various verticals / domains and applications. You can reach out directly to the expert technical team at SIAssist@Honeywell.com for your various needs during the selling and execution of projects.



This year, SIAssist completed more than 168 requests by end of Oct 2023 and provided support to more than 40 System Integrators.

P&E initiative is progressing well, so far 75 P&E requests have been served till end of Oct 2023. Under this initiative the SIAssist team will support various types of Modular Systems proposals, ranging from small to large scale.

Digital University

Digital University is a Honeywell Process Solutions new training platform primarily dedicated to the Channel Partners registered for CHAMP. Digital University contains HPS product and solution trainings developed to elevate the technical capabilities of the Channel Partners and it is designed to grow with new and refreshed content.



Refer more details in Product Update section



PRODUCT UPDATES

Digital University

Honeywell Academy offers its channel partner a quality learning experience designed to empower to advance education. Discover our digital training materials.

Go on the HPS website process.honeywell.com > Sign In > SIGN IN TO MY HONEYWELL and enter your credentials > Select [Channel Portal](#) > Select [Digital University \(Training Platform\)](#) from the CHANNEL HOME QUICK LINKS menu located on the left side of the CHAMP homepage to get to the Digital University home page.

Watch this [QUICK DEMO VIDEO](#) for a quick tour!

Exciting New Courses on Digital University!

Embark on a path of continuous growth with our latest additions:

1. ControlEdge PLC Technical Orientation Training: Explore the full potential of our product for newcomers, covering all its features.
2. ControlEdge PLC/RTU Labs: Hone your skills with hands-on self-practice sessions for common tasks.
3. Safety Manager SC Fundamentals Course: Dive in and create your first project with this comprehensive, interactive course.
4. Coming Soon: ControlEdge PLC/RTU Fundamentals Course: Step-by-step videos to guide you in creating, modifying, and troubleshooting your first project.

C300 Series 8 SC

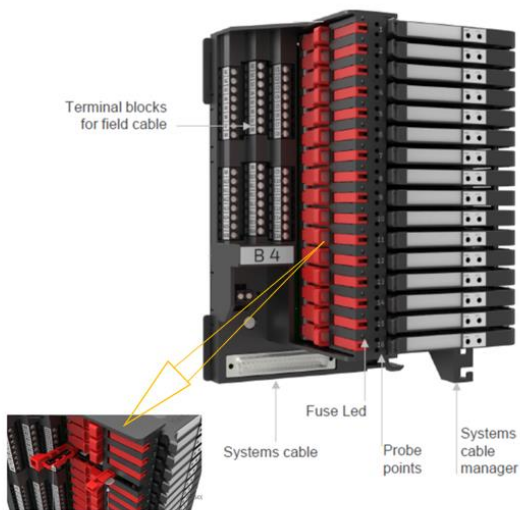
Revised Specifications of Series 8 Controller and IO for C300v5 controller (8C-PCNT05) & its Memory Backup Assembly Module (50182539-001)

Series 8 Controller and IO Specification document is applicable to Experion Plant Cruise (PC) and LX.

Starting from 1st October 2023, new version of C300 as 8C-PCNT05 controller along with its MBA to be considered for all new orders. Specification of 8C-PCNT05 are now available on CHAMP portal

Universal Marshalling Solution (UMS) – Safety

NEW MARSHALLING SOLUTION (UMS)



- 16 Channel Assembly DIN Rail mountable
- With integrated fuse and disconnects – LEAP™
- Flexible field wiring (2,3,4 Wire Signals)
- Slide in Adaptor modules
- Includes Intrinsically Safe (IS) Universal Adapters
- Industry's thinnest IS barriers 10mm
- HART PassThrough
- Uses Honeywell Mass termination Cable to IOTAs
- Certified for Safe and Hazardous area installation
- -40 deg C to +70 deg C

Compliances-

- Ingress protection : IP20 as per IEC 60529
- Conformance : IEC Ex (IECEX SIR 19.0067X), ATEX (SIRA 19ATEX4224X), cCSA us
- EMC standard : IEC 61326-1
- Compliance : RoHS

For Details Refer User Guide

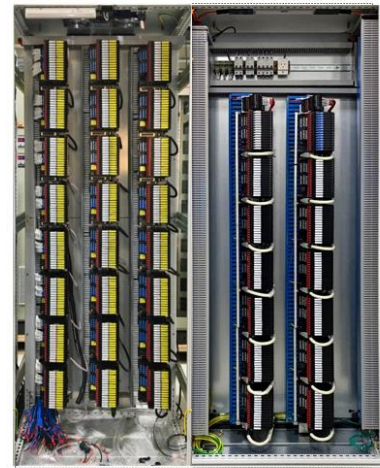
MARSHALLING TRANSFORMATION WITH UMS

MARSHALLING CABINET - CURRENT



- Cabinet standardization
- Easy Maintenance
- All Marshalling in one Form Factor
- Uses Honeywell Mass termination Cable to IOTAs

MARSHALLING CABINET – With UMS



- 1 UMS Assembly = 16 Channels
- 1 Column = 8 UMS Assembly
- 3 Columns = 1 Side Cabinet
- 6 Columns = 1 Cabinet

UMS - SAFETY

For Safety System

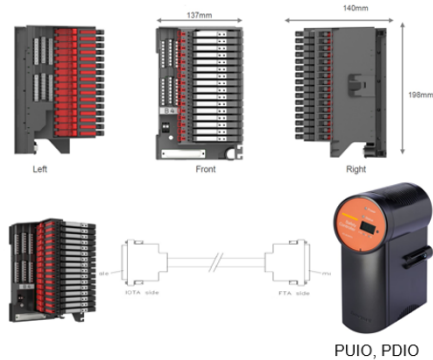
Module Number	Signal Type	Function	SIL	IS/NIS	Status
CC-UGIA01	NA	IS Baseplate / Assembly	3	IS	Released & TUV Approved
CC-UPTA01	Pass Through	Pass Through Adapter	3	NIS	Released & TUV Approved
FC-UDI501	DI with LM	DI with 5K End of Line resistor	3	NIS	Released & TUV Approved
FC-UDIR01	DI Relay	Relay Input	3	NIS	Released & TUV Approved
FC-UJIR501	DI Relay LM	Relay Input with 5K End of Line resistor	1	NIS	Released & TUV Approved
FC-UDOR01	DO Relay	Relay Output	3	NIS	Released & TUV Approved
FC-UAIA01	AI 3 Wire	3 wire AI	3	NIS	Released & TUV Approved
FC-UDIN01	Namur Proximity	N-type Proximity switch	2	NIS	Released & TUV Approved
FC-UDNS01	Namur Proximity	SN-type Proximity switch	2	NIS	Released & TUV Approved
FC-UAIS01	AI Sink	AI for Sink devices	2	NIS	Released & TUV Approved
FC-UGAI01	Analog Input	Isolator	2	IS	Released & TUV Approved
FC-UGAO01	Analog Output	Isolator	2	IS	Released & TUV Approved
FC-UGDA01	Digital Input / Output	Isolator,N	2	IS	Released & TUV Approved
FC-UDOF01	Digital Output Relay	Fire & Gas	2	NIS	Released & TUV Approved
FC-USCA01	Integrated FTA	High Current Baseplate	3	NIS	Released & TUV Approved

Termination Cables

Module Number	System	Description
FC-SIC5XXX	PUIO, PDIO	Mass Termination Cable

Foam Factor

Assembly (WxHxL) – 137 x 140 x 198 mm



PUIO, PDIO



PROGRAM UPDATES

Demo Systems

Demo applications are designed and developed for various applications and for products like Experion® LX/C300, Safety Manager SC, ControlEdge™ HC900, ControlEdge™ PLC, ControlEdge™ RTU, ControlEdge™ UOC, Experion® PPC.

These are available in three packages:

- Integrated Demo
- ICSS Demo
- Individual Demo.

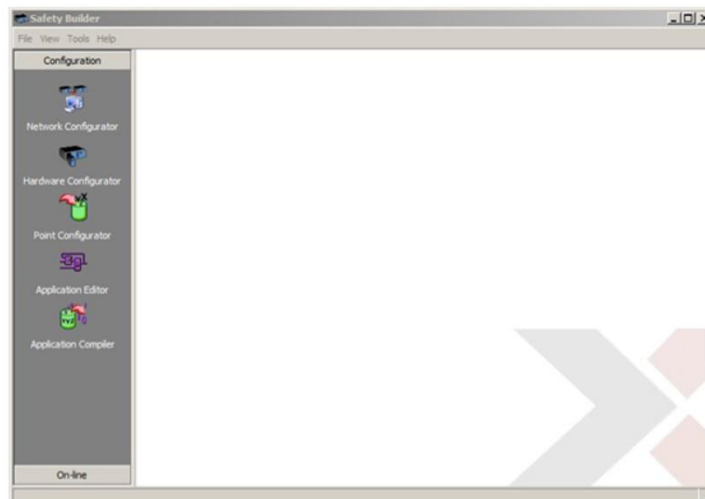
These demos support you in demonstrating and training customers on the Modular Systems portfolio. The applications and details are available with the SIAssist team. For more information, please contact SIAssist@Honeywell.com.



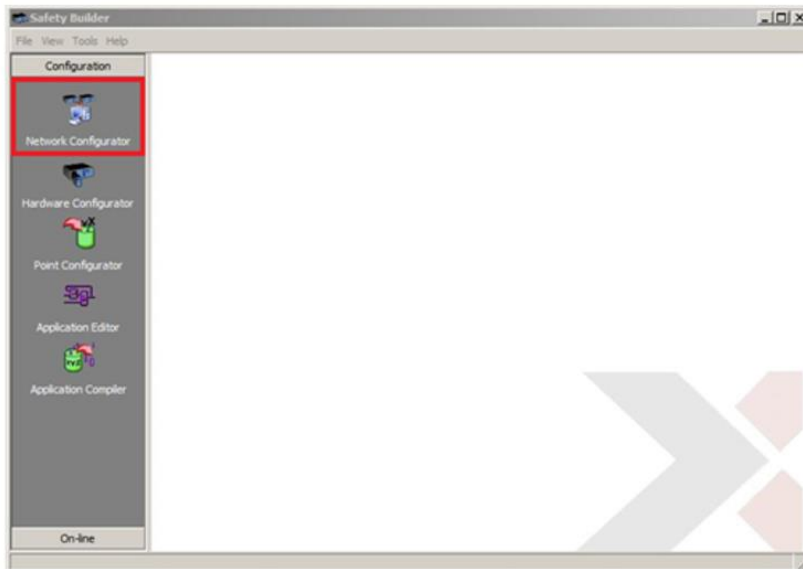
KNOWLEDGE ARTICLE

Safety Manger-SC : How to Collect Diagnostics -SMSC

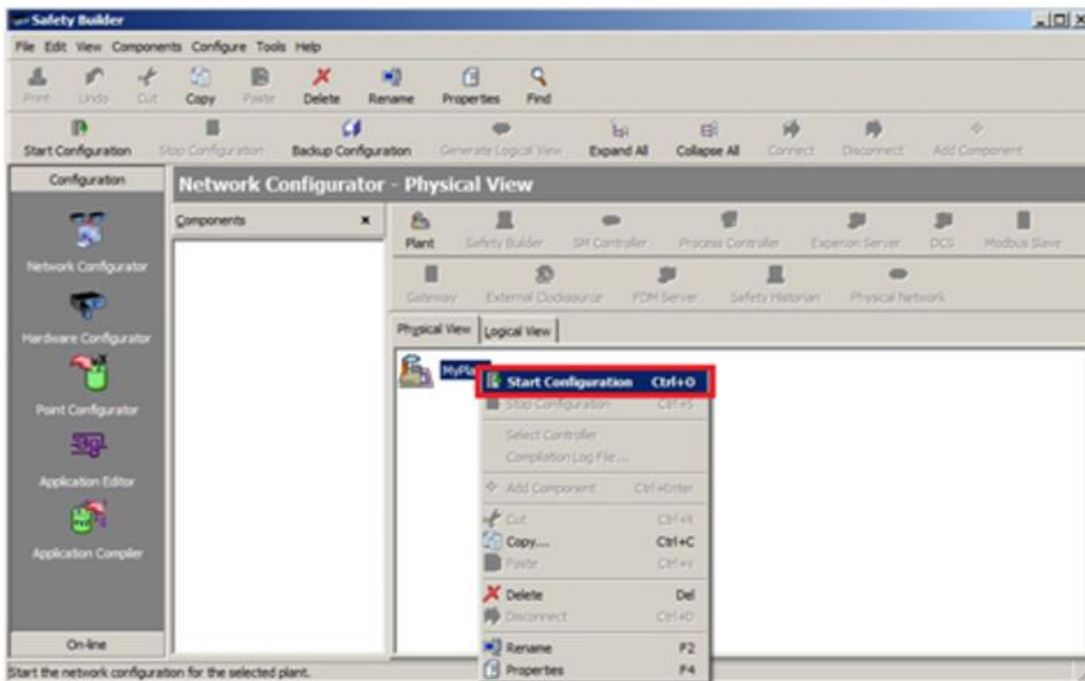
Start the Safety Builder Software



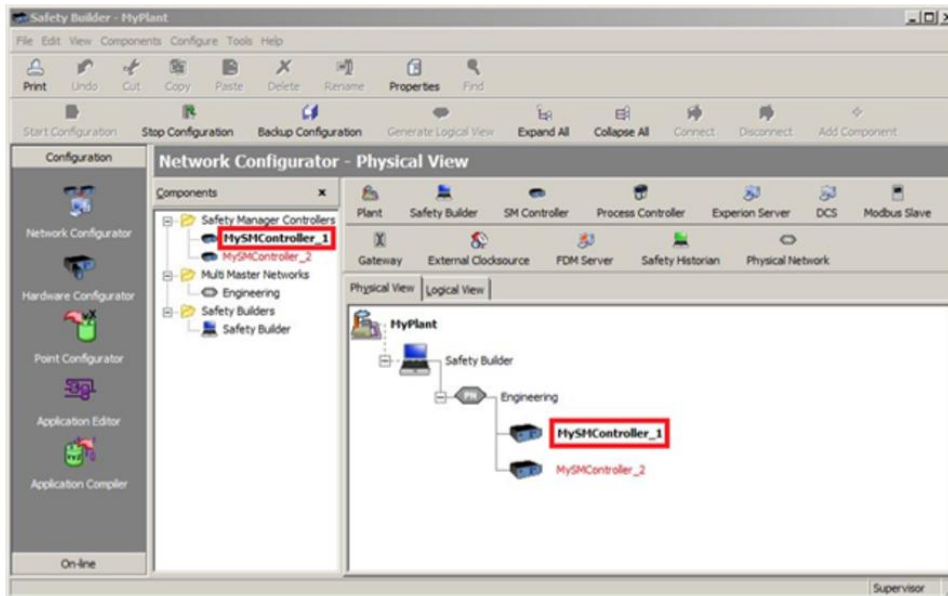
Open Network Configurator: Select the Network Configurator from the Configuration menu in the Navigation panel on the left.



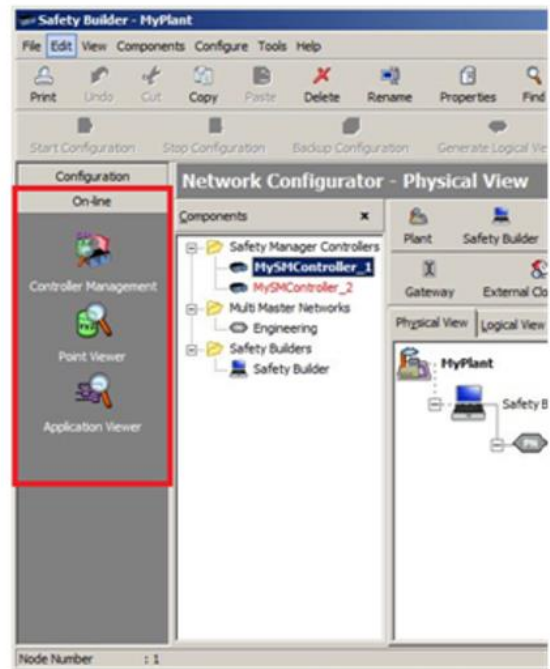
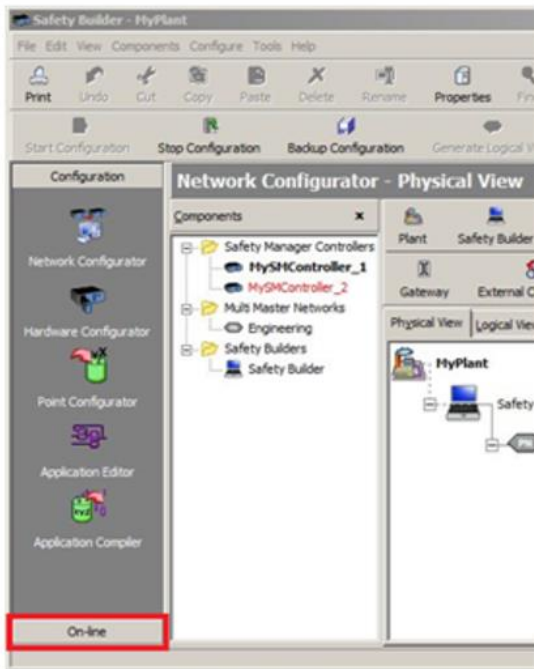
Open the Plant containing the controller: Select the Plant containing the Safety Manger-SC controller and open the Plant. Right click the plant and click the “Start Configuration” option from the menu.



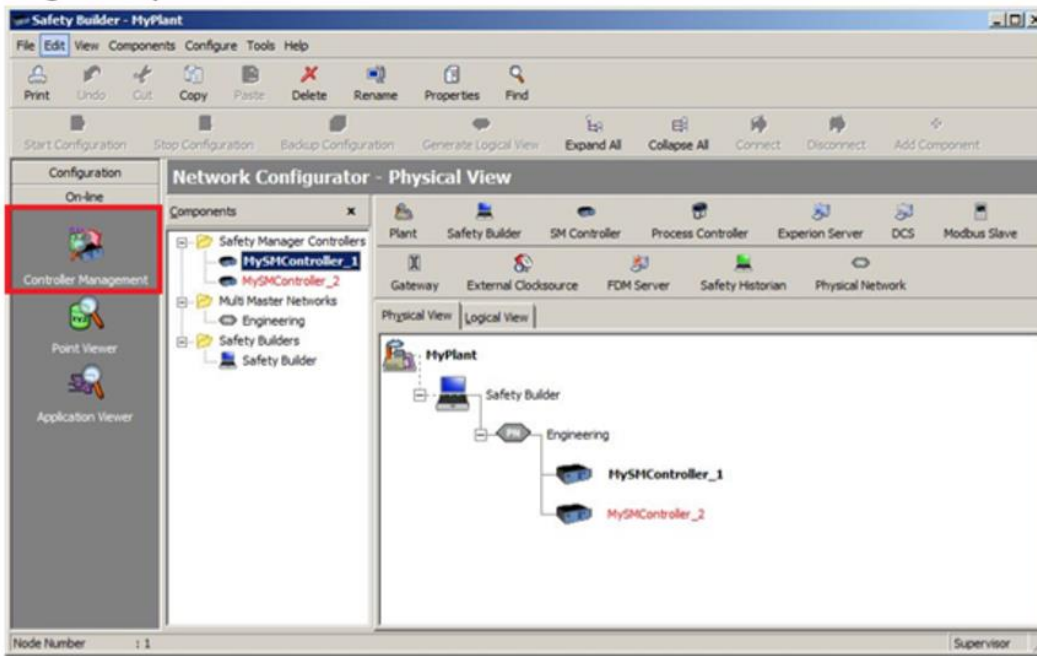
The selected controller will be shown in bold font, in either black, red, or blue color.



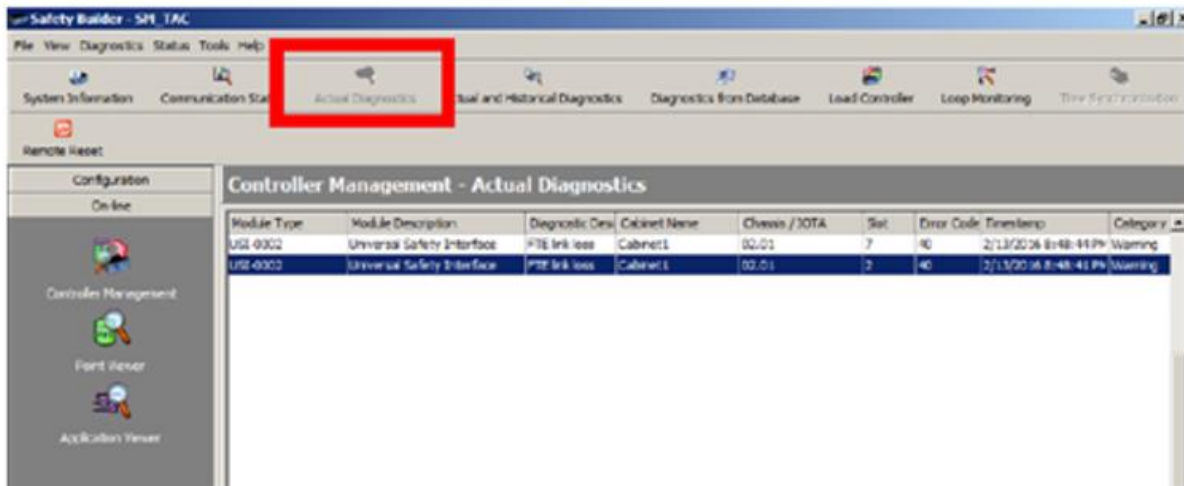
Open Controller Management: Select the On-line menu in the Navigation panel on the left. This will open the On-Line menu.



Select the Controller Management from the On-Line menu in the Navigation panel on the left.



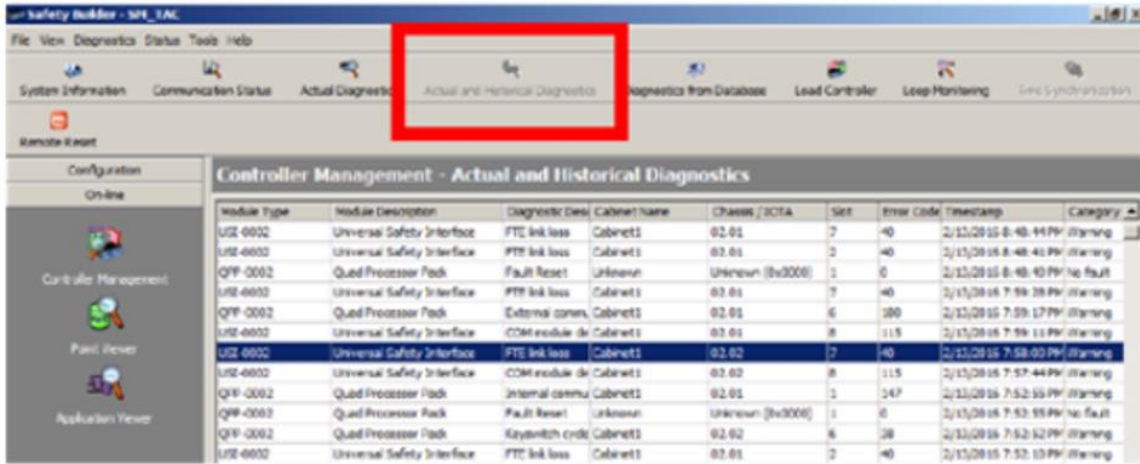
Check Actual Diagnostics: Select the "Actual Diagnostics" button from the toolbar.



This will start the retrieval of the Actual diagnostics from the Safety Manger-SC controller, which will be stored in the diagnostics database file on disk.

Capture screenshots of the diagnostic information.

Check Actual and Historical Diagnostics: Select the “Actual and Historical Diagnostics” button from toolbar.



This will start the retrieval of the Actual and Historical diagnostics from the Safety Manger-SC controller, which will be stored in the diagnostics database file on disk.

Capture screenshots of the relevant diagnostic information.



ESCALATION MATRIX FOR A SI ASSIST REQUEST

Level of escalation	Escalation Timeline	GES Escalation Contact	Regional / Pole Leaders Contact	SI Program Contact
1	2 Days	<u>Mukesh Chaudhari</u>	Regional Product Business Leader	N/A
2	4 Days	<u>Piyush Chaturvedi</u>	Regional Business Leader	Sukheesh Gandhi
3	6 Days	<u>Dipankar Rautray</u>	Pole General Manager	<u>Carlos Villa Rodriguez</u>



[Sukheesh Gandhi](#)
Sr. Offering Mgmt. Specialist



[Mukesh Chaudhari](#)
Sr. Systems Engineer Supervisor

MODULAR SYSTEMS TECHNICAL SOLUTION CONSULTANTS

North EU <u>Waqar Amin</u>	South EU <u>Maurro Vaccarino</u>	Canada <u>Dumar Jaramillo</u>	USA <u>Bob Kotoski</u>	South AMER <u>Raul Agundiz</u>
India <u>Bhavin Patel</u>	China <u>XueYong Shi</u>	MENA <u>Nikhilesh Muraleedharan</u>	RoAP <u>Razizuddin Razali</u> <u>Permadi Sandi</u>	