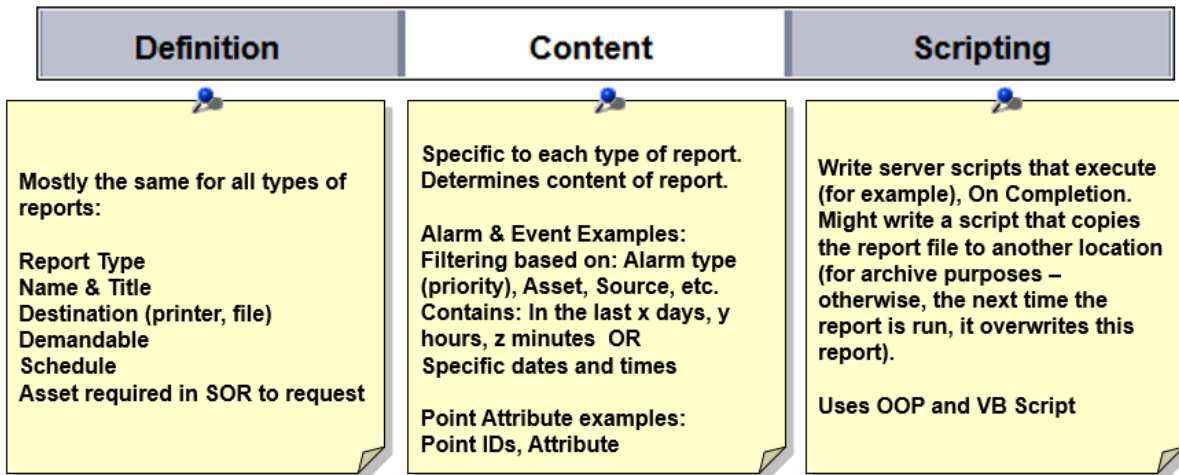


## Procedure – Procedure -Report Configuration in Experion HS/Experion LX

Three Configuration Pages in Configuration Studio

- Definition Page
- Content Page
- Scripting Page



### Definition Page:

The screenshot shows the 'Definition' tab of the Configuration Studio interface. Key elements and annotations include:

- Report Definition:** Report type is set to 'Alarm and Event'. A 'Request' button is visible, with an annotation: 'Click to view most recent report'.
- Report History:** A table shows a 'Most recently requested' report on 19-Mar-14 at 11:28, with a duration of 3 s and status 'Completed'. An annotation points to this table: 'Report History'.
- Reporting on Request:** The 'Enable reporting on request' checkbox is checked. An annotation says: 'Check to allow on request'.
- Periodic Reporting:** The 'Enable periodic reporting' checkbox is unchecked. A list of options (Hour, Shift, Day, Week, Month, Quarter, Year) is shown. An annotation states: 'Periodic report will be "requested by" the specified operator. Not required for all report types.'
- Security:** A field for 'To access report, operators must be assigned to:' is present. An annotation notes: 'Does not apply to periodic reports.'
- General Note:** A yellow box at the bottom states: 'Cannot enable periodic reporting unless an Operator ID is selected.'
- Asset Assignment:** A yellow box at the bottom right states: 'Report can be demanded or viewed only by operators with this asset assigned.'

**When operator is blank, report includes events from all operators. Entering an operator (ex: .loper1), report includes events generated by .loper1.**

**The "operator" is STA35 if the event was created @ Sta35 while using sta. based security.**

**"Filtering": Might want to use wildcards. Ex: \*Reactor\***

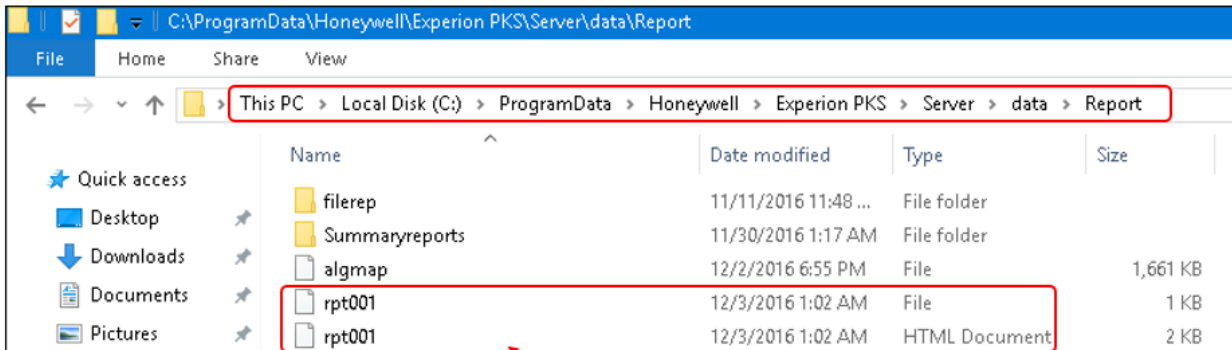
**Events to search: See next page**

**This option not supported by Experion HS**

**Enable to view timestamp with resolution of 0.1 millisecond**

### Report Output :

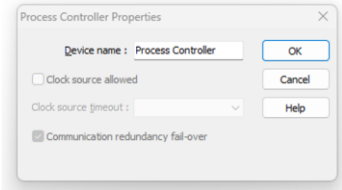
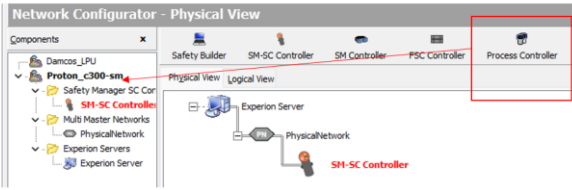
- Two output files for each report – overwritten each time the report is run
  - rptxxx.htm -- Used by Station to display On Request reports
  - rptxxx – text file viewable from Notepad (xxx is the report number)



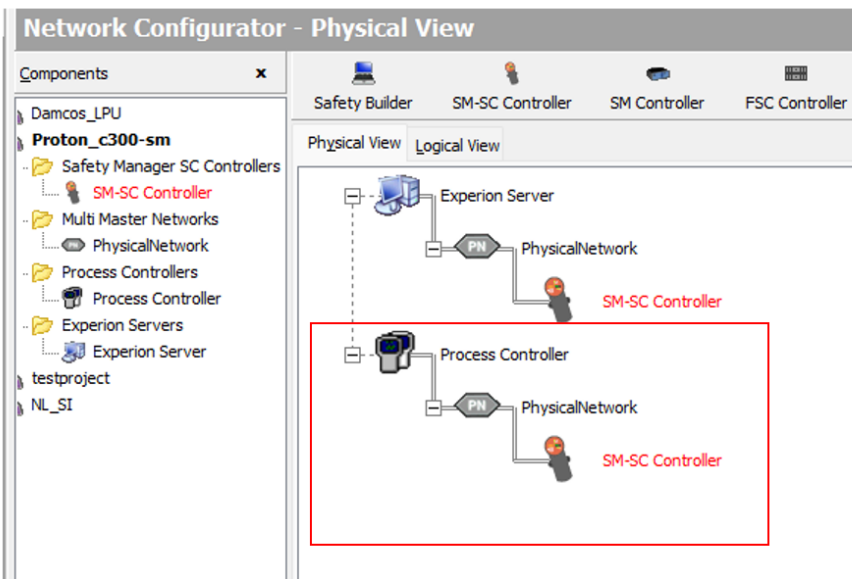
**Report Number 001**

### 1. In Safety Manager, Steps to add Process Controller in the Safety Network

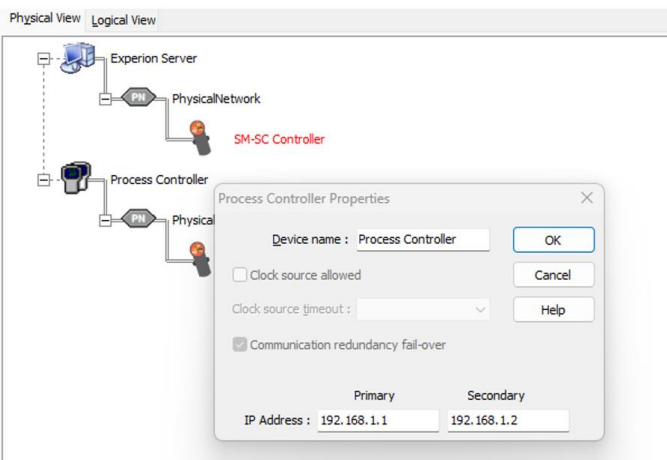
Click Process Controller, Drag and drop under Plant network and Click OK.



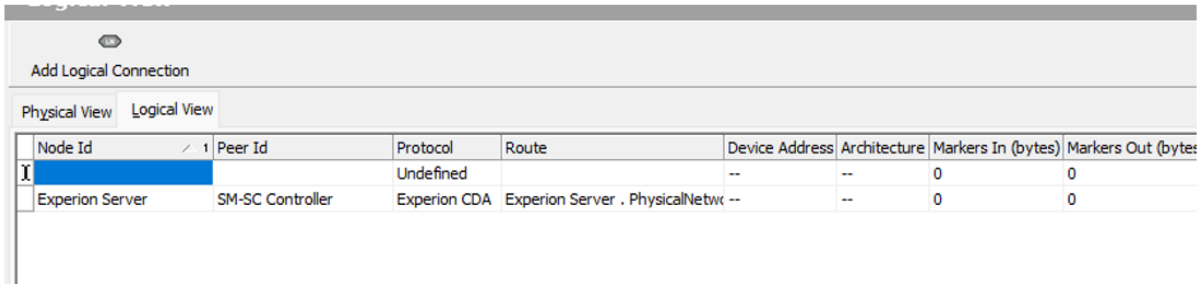
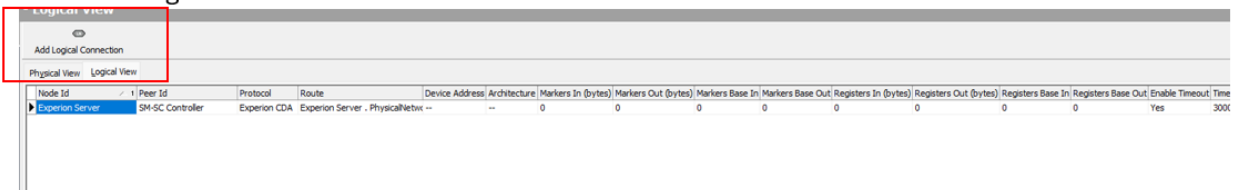
2. Drag and Drop **Physical Network** under Process controller.



3. Right click on Process Controller – assign the C300 controller name and IP Address



- Click on Logic View to add Logical connection between C300 and SMSC and Add Logic connection.



- Add C300 in Node ID ((select from drop down list)
- Add SMSC in Peer Id (select from drop down list)
- Click on “Protocol” field, Protocol and Route are added automatically.
- Define Marker in and Register In bytes.
- Timeout setting shall be 5000.

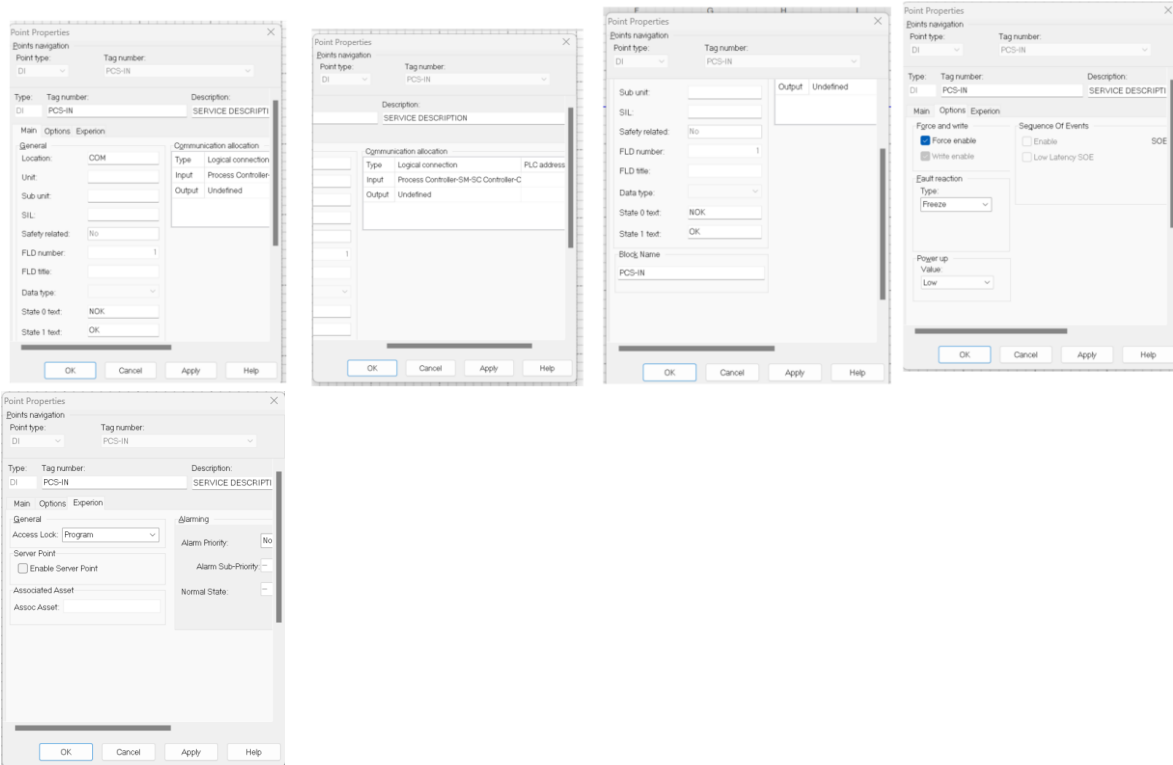
Node Id	Peer Id	Protocol	Route	Device Address	Architecture	Markers In (bytes)	Markers Out (bytes)	Markers Base In	Markers Base Out	Registers In (bytes)	Registers Out (bytes)	Registers Base In	Registers Base Out	Enable	Timeout
Experion Server	SM-SC Controller	Experion CDA	Experion Server . PhysicalNetw	--	--	0	0	0	0	0	0	0	0	Yes	30000
Process Controller	SM-SC Controller	Experion CDA	Process Controller . PhysicalNet	--	--	4	0	0	0	0	0	0	0	Yes	5000

- Click on Logic Click on Application editor.

PCS – DI Com:

Click on DI tag to create a new point for PCS. Follow below settings.

- Location – COM
- Logical connection: assign newly configured C300-SMSC here.
- Block Name – as per project philosophy.
- FLD Tag name on FLD Property – as per project philosophy
- Fault Reaction – FREEZE
- Force Enable -YES
- Access Lock - Program



6) After Configuration, Download the controller and publish the point.



7) After Publish, the point can be configured in C300 as follows.

In Control builder, you can use Push block/INTERLOCKA block to connect the SMSC points as follows.

