



Submit a request to  
[SIAssist@honeywell.com](mailto:SIAssist@honeywell.com)

Access or [create an account](#) in  
[CHAMP](#)

 HIGHLIGHTS

### Technical Update Newsletter

The **Technical Update Newsletter** is published on a quarterly basis. This will provide updates about the Modular Systems product portfolio and the System Integrator Program. Below you will also find the important points of contact that can help you resolve your issues.



We have completed the **2023 System Integrator Organization Competency Survey** on 18-Oct-23. This was conducted to understand the SI organization's expertise across different Verticals and Honeywell Modular Systems. Based on this survey, the qualified SI organization will receive Industry and Product badges as a recognition of its expertise for 2024. Each badge will be valid for 1 year.



**System Integrators Assist (SIAssist)** is set up to support SIs globally. Technical and P&E Support will be provided to **Authorized SIs** during Pre-Bid, Post-Bid and on Ongoing basis. The SIAssist team has expertise in executing projects in various verticals / domains and applications. You can reach out directly to the expert technical team at [SIAssist@Honeywell.com](mailto:SIAssist@Honeywell.com) for your various needs during the selling and execution of projects.

Last year, SIAssist supported more than 200 requests by end of Dec 2023 and provided support to more than 60 System Integrators.

**P&E initiative** is progressing well, P&E requests have increased to 2X from the previous year marking amazing progress in the engagement with our SI Network for providing assistance on Proposals. We addressed 92+ P&E requests till end of Dec 2023. Under this initiative the SIAssist team will support various types of Modular Systems proposals, ranging from small to large scale.

## Digital University



Digital University is a Honeywell Process Solutions new training platform primarily dedicated to the Channel Partners registered for CHAMP. Digital University contains HPS product and solution trainings developed to elevate the technical capabilities of the Channel Partners and it is designed to grow with new and refreshed content.

Refer more details in Product Update section.



## PRODUCT UPDATES

### Digital University

Honeywell Academy offers its channel partner a quality learning experience designed to empower to advance education. Discover our digital training materials.

Go on the HPS website [process.honeywell.com](https://process.honeywell.com) > Sign In > SIGN IN TO MY HONEYWELL and enter your credentials > Select Channel Portal > Select Digital University (Training Platform) from the CHANNEL HOME QUICK LINKS menu located on the left side of the CHAMP homepage to get to the Digital University home page.

Watch this [QUICK DEMO VIDEO](#) for a quick tour!



## Embark on a Knowledge Journey with Our 'Ask the Expert' Series!

We're excited to unveil a game-changing initiative designed exclusively for you — the 'Ask The Expert' events! Set to be a regular highlight on your calendar, these online gatherings promise an engaging platform to deep dive into our product offerings and elevate your expertise.

### Navigating the Series:

- **Product Focus:** Each event zeroes in on a specific product, offering a detailed exploration of its features, applications, and real-world functionalities.
- **Guided Demonstrations:** Our seasoned trainers will take the reins, providing live demonstrations and insider insights to enhance your understanding.
- **Live Q&A:** We value your questions! Engage in real-time Q&A sessions, ensuring that your queries find the answers they deserve.
- **Exclusive Takeaways:** It's not just about knowledge; each session equips you with sample code files and specialized training materials related to the discussed topics.

### What's in it for You:

- **Stay Ahead:** Keep your finger on the pulse of our evolving product portfolio and stay informed about the latest industry trends.
- **Problem-Solving Hub:** Tackle challenges head-on by tapping into the expertise of our trainers and the collective wisdom of your peers.
- **Continuous Learning:** Beyond the events, expect a steady flow of valuable resources to support your ongoing professional growth.

**Register now and share your pertinent questions in this form**, enabling us to tailor our content to address your specific concerns.

Following registration, anticipate receiving an invitation featuring the session's agenda, crafted directly from the topics you submit in this form.

Our inaugural session will focus on ControlEdge PLC, and subsequent sessions will be scheduled based on your requests and interests. Your active participation ensures that each session is designed to meet your unique needs.

Link to registration form: <https://forms.office.com/r/seAAYXaJA9>

## C300 Series 8 SC

Series 8 C300v5 controller (part number 8C-PCNT05) is launched on Nov 15th.



When using 8C-PCNT05, please note the release of Experion PC/LX should be R520.2. The RAM charger should be 50182539-001.

FTE switch should select Cisco 9200, more type of FTE switches are under qualification.

For now, 8C-PCNT03 & 8C-PCNT05 can't be used in redundant set. It will not sync.

The key enhancements of the C300v5 controller and the differentiation between C300v3 and C300v5 are as below.

	C300v3	C300v5
<b>Processing Resources</b>		
Execution Units (XUs) available for all CPU consumption (Control, IO, Comm)	5500	9000
<b>Memory Resources</b>		
Total Available C300 CEE User Memory	16 MB	32 MB
Processor Core	Single	Dual
<b>Experion Release</b>		
Supported Release	Experion R110, 120, R500, R51x and R520	Experion R520 and onwards
<b>Memory Backup Module (RAM Charger)</b>		
RAM Charger Module	51454475-100	50182539-001
<b>PGM Connection per C300</b>		
Max number of PGM connections per C300	4	8

Communication Performance (Overall Data Access Rate)	C300v3 (50MS)	C300v5 50MS (Conventional)
Maximum Total Parameter Access Response Rate (Includes all Server Data Requests, Direct Station Data Requests, and peer communications including other C200s, C300s and FIMs)	2500 PPS	4000 PPS (Display) 2000 PPS (Peer)
Display Data Access Capacity		
Maximum Total Subscribed Parameters per C300. (Includes all Server Data Requests Console Station Data Requests)	4000	5000 (See Note 1)
Communication Performance (Peer-to-Peer)		
Maximum Initiator Pull/Get Subscribe Rate to all target nodes. (Incoming data)	1000 PPS	2000 PPS
Maximum Target Publish Rate to Pull/Get Subscriptions from all initiator nodes. (Outgoing data)	1000 PPS	2000 PPS
Peer-to-Peer Subscription Capacity / Update Rate		
Total Maximum C300 peer capacity per update rate choices	100 @ 100 ms 200 @ 200 ms 500 @ 500 ms 1000 @ 1 sec	200 @ 100 ms 400 @ 200 ms 1000 @ 500 ms 2000 @ 1 sec

## ControlEdge™ PLC

The latest Release R180 brings following new features to ControlEdge PLC –

### CPM HARDWARE

New Module No. : 900CP2-0100	
Item	Specification
Processor	Dual Core ARM® Cortex™-A9 Core (32 bit) 667 MHz
User Programming memory, (Flash)	User: 10 MB (Program 5 MB, Data 5 MB), 256 MB (Flash) *2
SD card support	32GB Class 6 / Class 10 industry standard
Running Memory (RAM)	512MB with Error Correction Code

- **Memory Enhancement of the CPM**
  - Enhance DDR memory from 4Gb to 8Gb.
  - Enhance flash from 2Gb to 4Gb.
- **Extended Temperature Support**
  - New CPM supports extend operating temperature to -40 ~ 70°C allowing to expand into applications for outdoor and remote installation such as in Oil & Gas, Water & Wastewater, Infrastructure demand control and monitoring systems capable of withstanding extreme temperature.
- **Parts Obsolescence Management**

- Address SD card slot obsolescence.
  
- **Enhanced Security Features**
  - Support Secure Authentication v5 for DNP3 protocol.
  - Support Whitelist for MQTT protocol.
  - Enable TLS function for IEC60870 protocol.
  
- **Support drop-in replacement.**  
New PLC CPM supports drop in replacement for previous version of CPM

### **ControlEdge 900 IO portfolio Update**

Control Edge 900 IO family comprises of the following 3 analog Output modules –

- 900B01-0301 - Analog Output, 0 to 20mA, (4 channel)
- 900B08-0202 - Analog Outputs 0 to 20mA (8 channel, 5 modules/rack)
- 900B16-0202 - Analog Outputs 0 to 20mA (16 channel, 2 modules per rack)

Due to component obsolescence issue, 4 Channel AO module (900B01-0301) will become obsolete going forward and customers are requested to use 8 channel AP module (900B08-0202) in place of the 4-channel module. Orders for 4 channel AO modules will not be accepted going forward.



## **PROGRAM UPDATES**

### **Demo Systems**

Demo applications are designed and developed for various applications and for products like Experion® LX/C300, Safety Manager SC, ControlEdge™ HC900, ControlEdge™ PLC, ControlEdge™ RTU, ControlEdge™ UOC, Experion® PPC.

These are available in three packages:

- Integrated Demo
- ICSS Demo
- Individual Demo.

These demos support you in demonstrating and training customers on the Modular Systems portfolio. The applications and details are available with the SIAssist team. For more information, please contact [SIAssist@Honeywell.com](mailto:SIAssist@Honeywell.com).



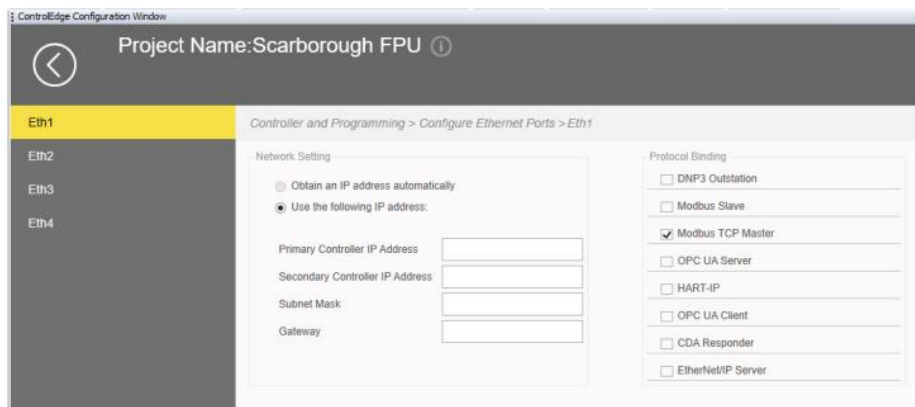
## KNOWLEDGE ARTICLE

### CE PLC: CE PLC Modbus Master TCP/IP Communication Configuration Procedure

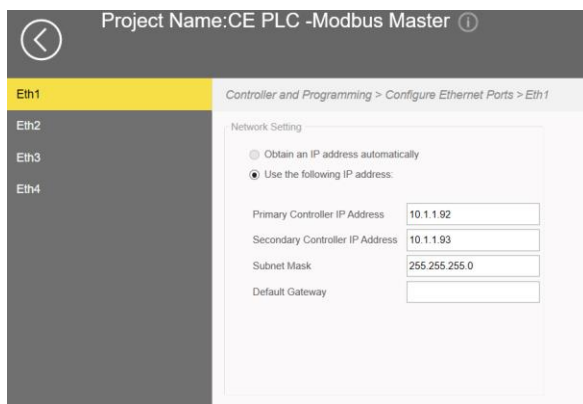
The Modbus Master PLC should have a unique Device ID for interfacing. Modbus Slave PLC shall have a Vendor specific unique ID for each device which shall be used for Data Mapping between master and Slave PLC.

The Modbus master non-default settings and function codes used will be as follows:

- It will be using ETH#1/ETH#2 ports (Modbus TCP/IP). Select PLC as Modbus TCP master in ControlEdge Builder from Configure Ethernet Ports menu.

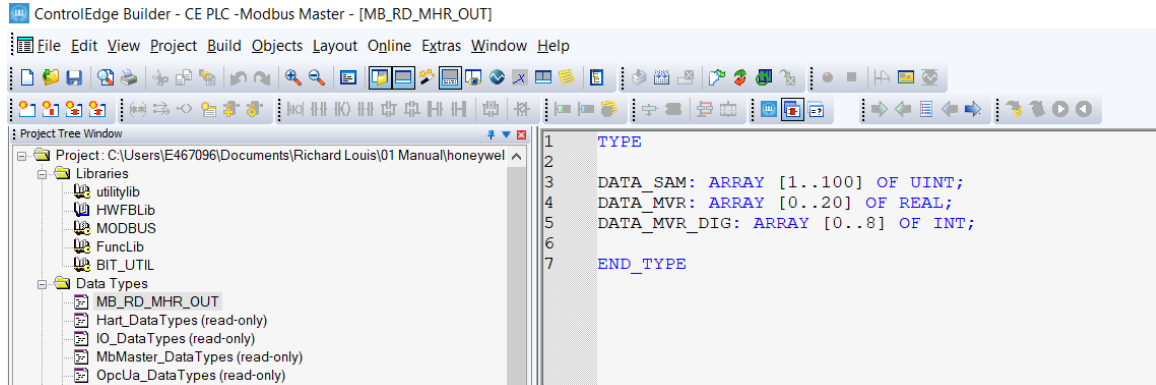


- Under "Network Setting", select "Use the IP address" and enter the details in the IP Address, Subnet Mask and Gateway fields as per each Package specification.



Modbus TCP master is to be programmed for the project in IEC Programming Workspace as given below.

- In the PLC application, create an array in data type as per count of tags for which data to be transmitted.

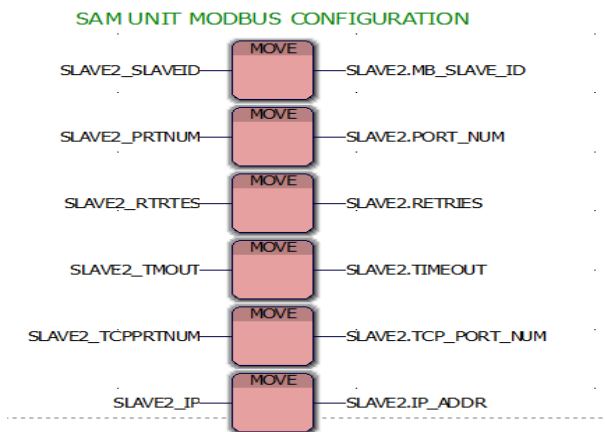


- In the PLC application, using Move function blocks move the information such as IP address, Port no, Device no. etc. to that Modbus configuration variable

**Modbus Communication Port Definition Device XYZ**

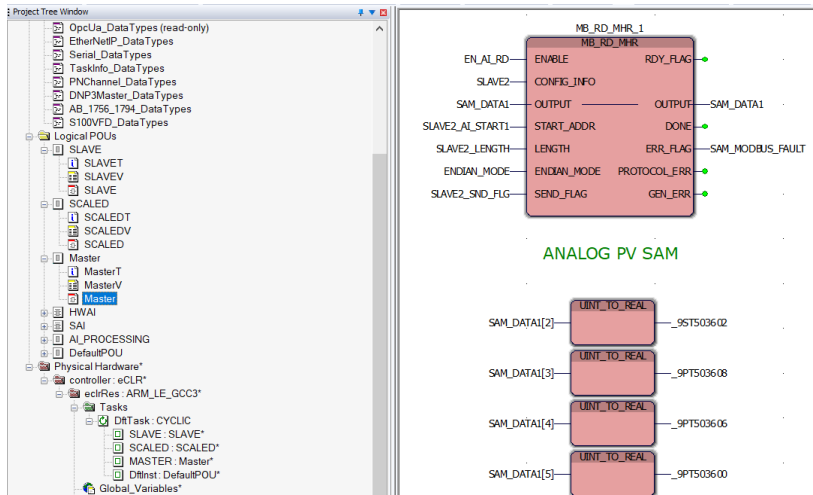


Refer below example for Modbus Communication Port definition.

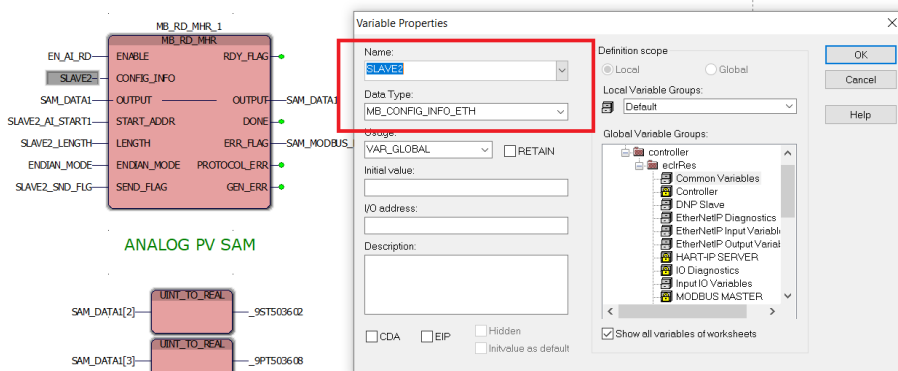


After the basic programming steps as described, the workplace shall appear as shown below.

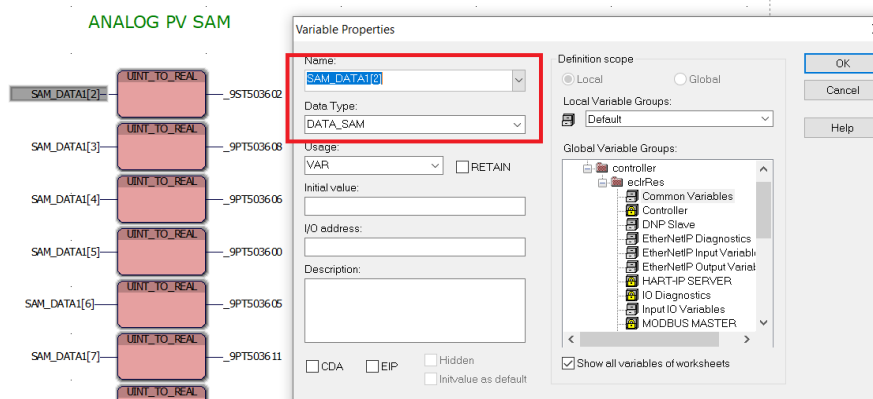




Variables “SALVE2 “ Type is defined as Data Type “MB\_CONFIG\_INFO\_ETH” as given below.



Variables “SAM\_DATA1 “ Type is defined as Data Type “ DATA\_SAM” as given below.



- Click Connect from the Home Page to connect a controller and download the configuration.



## ESCALATION MATRIX FOR A SI ASSIST REQUEST

Level of escalation	Escalation Timeline	GES Escalation Contact	Regional / Pole Leaders Contact	SI Program Contact
1	2 Days	<a href="#">Mukesh Chaudhari</a>	Regional Product Business Leader	N/A
2	4 Days	<a href="#">Piyush Chaturvedi</a>	Regional Business Leader	<a href="#">Sukheesh Gandhi</a>
3	6 Days	<a href="#">Dipankar Rautray</a>	Pole General Manager	<a href="#">Carlos Villa Rodriguez</a>



**[Sukheesh Gandhi](#)**  
Sr. Offering Mgmt. Specialist



**[Mukesh Chaudhari](#)**  
Sr. Systems Engineer Supervisor

### MODULAR SYSTEMS TECHNICAL SOLUTION CONSULTANTS

North EU <a href="#">Waqar Amin</a>	South EU <a href="#">Maurro Vaccarino</a>	Canada <a href="#">Dumar Jaramillo</a>	USA <a href="#">Bob Kotoski</a>	South AMER <a href="#">Raul Agundiz</a>
India <a href="#">Bhavin Patel</a>	China <a href="#">XueYong Shi</a>	MENA <a href="#">Nikhilesh Muraleedharan</a>	RoAP <a href="#">Razizuddin Razali</a> <a href="#">Permadi Sandi</a>	