



Submit a request to
SIAssist@honeywell.com

Access or [create an account](#) in
[CHAMP](#)



HIGHLIGHTS

Technical Update Newsletter

The **Technical Update Newsletter** is published on a quarterly basis. This will provide updates about the Modular Systems product portfolio and the System Integrator Program.



System Integrators Assist (SIAssist) is set up to support SIs globally. Technical and P&E Support will be provided to **Authorized SIs** during Pre-Bid, Post-Bid and on Ongoing basis. The SIAssist team has expertise in executing projects in various verticals / domains and applications.

You can reach out directly to the expert technical team at SIAssist@Honeywell.com for your various needs during the selling and execution of projects.

This year, SIAssist supported more than 60 requests by end of April 2024 and provided support to more than 30 System Integrators.

P&E Update:

P&E requests have increased to 2X from the previous year marking amazing progress in the engagement with our SI Network for providing assistance on Proposals. We addressed 30+ P&E requests till the end of April 2024. Under this initiative the SIAssist team will support various types of Modular Systems proposals, ranging from small to large scale.

Digital University



Digital University is a Honeywell Process Solutions new training platform primarily dedicated to the Channel Partners registered for CHAMP. Digital University contains HPS product and solution trainings developed to elevate the technical & advance capabilities of the Channel Partners and it is designed to grow with new and refreshed content.

Now discover our new E-Learning content & digital training materials.

Go on the HPS website process.honeywell.com > Sign In > SIGN IN TO MY HONEYWELL and enter your credentials > Select [Channel Portal](#) > Select [Digital University \(Training Platform\)](#) from the CHANNEL HOME QUICK LINKS menu located on the left side of the CHAMP homepage to get to the Digital University home page.

Watch this [QUICK DEMO VIDEO](#) for a quick tour!



Introducing – Ask the Expert Session



Unlocking the Power of ControlEdge RTU: 'Ask the Expert' Session for System Integrators

We are excited to invite you to our upcoming 'Ask the Expert' session, where we will delve into the world of ControlEdge RTU!

Register today and secure your spot for the session on 02.05.2024:

- Follow this [LINK to the Course](#) via Digital University (access via CHAMP, Quick Links) and enroll to the course.

Here's what awaits you:

- A thorough understanding of ControlEdge RTU's features and capabilities.
- Live demonstrations conducted by our expert trainers.
- Interactive Q&A sessions to address your queries and concerns in real-time.
- Exclusive resources for attendees, including sample code files, educational materials, and a comprehensive FAQ list.

Why should you attend?

- Enhance your proficiency in ControlEdge RTU.
- Discover solutions to your challenges through live demonstrations.
- Engage in direct discussions with our expert trainers.
- Acquire valuable insights and practical resources to take back with you.

Your Participation is Key!

We want to make this session as beneficial for you as possible. To do this, we need your help. By completing the form available upon registration, you can let us know your questions and desired topics for the session. This will allow us to tailor the session to meet your specific needs. Your input is important for the success of this event, and we highly encourage you to complete the form by 29.04.

Don't miss this unique opportunity to expand your knowledge of ControlEdge RTU.

We eagerly anticipate your active participation and valuable insights. See you there!

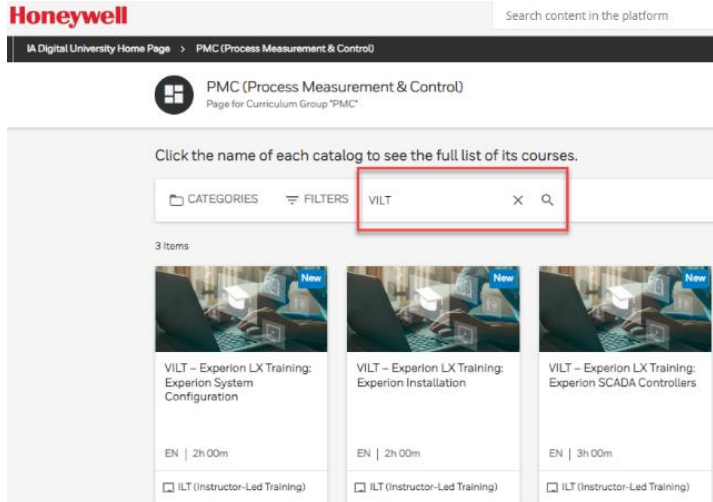
Title: Enroll in the Virtual Instructor Training for Experion!

Join our **Virtual Instructor Training for Experion!** From installation to advanced topics, this online program covers it all. Enhance your Experion skills and interact with experienced trainers during our LIVE sessions. During sessions, you can request next dedicated topics per your needs.

Highlights from our sessions:

- May 07 - Installation
- May 08 - Configuration
- May 09 - Communication Protocols Configurations
- July - Controller Programming
- September - Graphics Creation and Customization
- October - Historian

Enroll Now: Log into Digital University, search for "VILT" and enroll into multiple relevant Virtual Instructor Training sessions for you!



Contact Information

- [Julian Virban](#) Modular Systems Sr CX Training Professional
- [Senthil Balasundaram](#) PMC CX Training Manager



SMSC

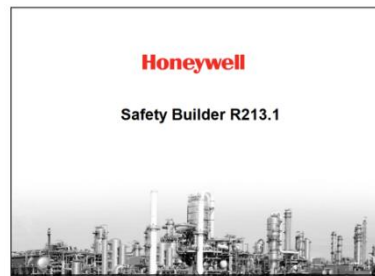
SCA Modules High Voltage.

Model number	Signal Type	Function	SIL	Release	Status
FC-USCH01	n.a.	Baseplate high voltage	3	R330	Q3 2023
CC-UDOA01	RO	120/230 V AC DIGITAL OUTPUT RELAY ADAPTER, ASSEMBLY	NA	R330	Q3 2023
CC-UDIA01	RI	120/230 VAC DIGITAL INPUT ADAPTER, ASSEMBLY	NA	R330	Q3 2023
FC-UORH01	RO	Safe Output Relay 230 VAC	3	R330	Q4 2023
FC-UIRH01	RI	Safe Input Relay 230 VAC	3	R330	Q4 2023

Safety Management Systems R213.1 has been released.

R213 New Features

- Safety Managements Systems
- Fast IO Logic Solver – F-IOLS
- Safety Builder enhancements
- Enhanced Cyber Security

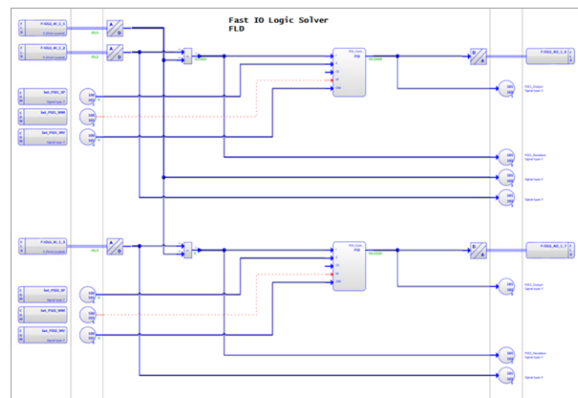
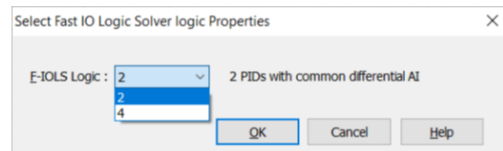
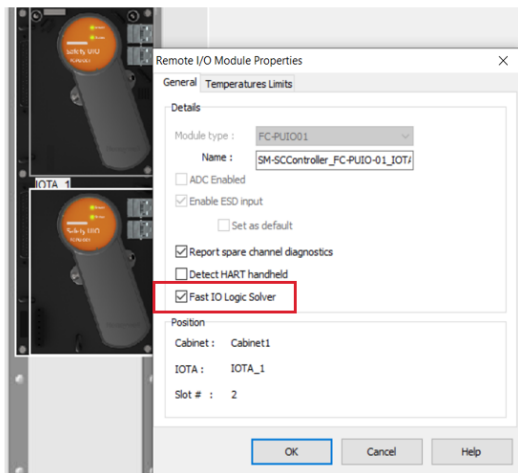


Fast IO logic Solver

Fast IO Logic Solver (F-IOLS) *

- Safety Application execution in Logic Solver at Safety IO Module (IOM)
 - Independent from the S300 Safety controller
 - SW enabled, every Safety IOM (PUIO) can be configured as a F-IOLS
- Multiple Safety IOMs can execute dedicated applications, all independent from each other.
 - Mixed configurations possible. Per Safety IOM configurable.
- Standardized F-IOLS application libraries:
 - Eliminates complex application programming using standardized, TÜV certified functions
 - Easier and faster safety application development and commissioning.
- Improved availability, F-IOLS configured modules remain operational even when the main S300 controllers are offline.
- Optimized execution performance and fixed cycle-time options (PID, Batch)
- All Safety IO network topologies supported (Ring and Star)
- Redundant and non-redundant (and combined) configurations supported
- Standard PUIO technical and environmental specifications

FAST IO LOGIC SOLVER



Safety builder enhancements

- **Control Charts Improvement**
 - Smooth conversion from classic FLD's to Control Charts
 - Bigger more clear logic symbols
 - Improved online view.
 - And performance



PROGRAM UPDATES

Demo Systems

Demo applications are designed and developed for various applications and for products like Experion® LX/C300, Safety Manager SC, ControlEdge™ HC900, ControlEdge™ PLC, ControlEdge™ RTU, ControlEdge™ UOC, Experion® PPC.

These are available in three packages:

- Integrated Demo
- ICSS Demo
- Individual Demo.

These demos support you in demonstrating and training customers on the Modular Systems portfolio. The applications and details are available with the SIAssist team. For more information, please contact SIAssist@Honeywell.com.

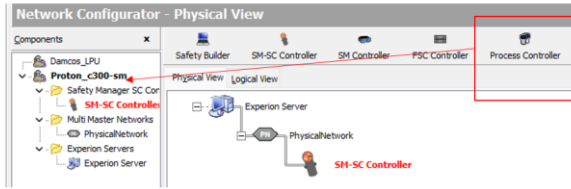


KNOWLEDGE ARTICLE

C300 and SCMSC CDA Communication Configuration Procedure

1. In Safety Manager, Steps to add Process Controller in the **Safety Network**

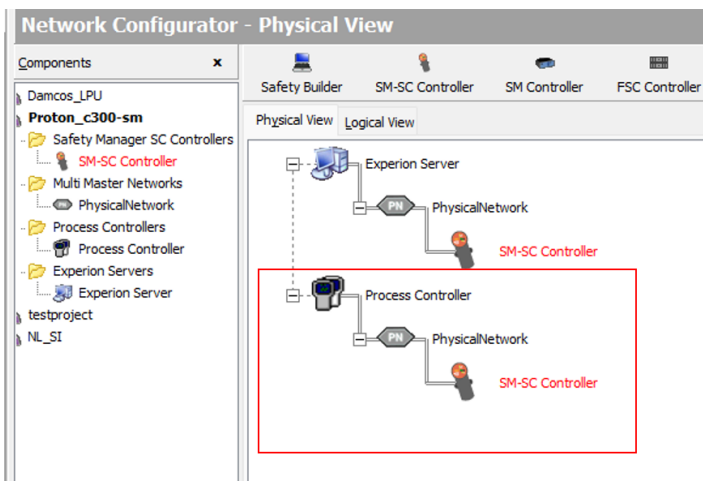
Click Process Controller, Drag and drop under Plant network and Click OK.



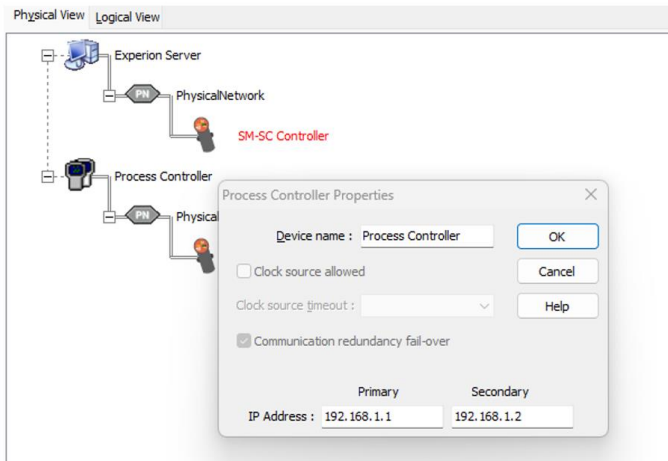
The 'Process Controller Properties' dialog box is shown. It contains the following fields and options:

- Device name: Process Controller (with an OK button)
- Clock source allowed (with a Cancel button)
- Clock source timeout: (with a dropdown menu and a Help button)
- Communication redundancy fail-over

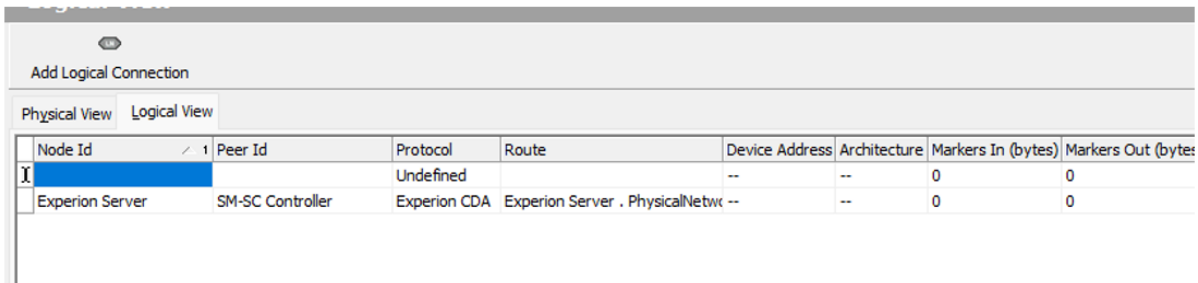
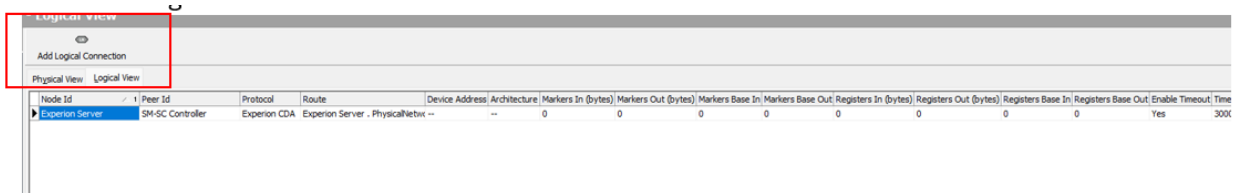
2. Drag and Drop **Physical Network** under Process controller.



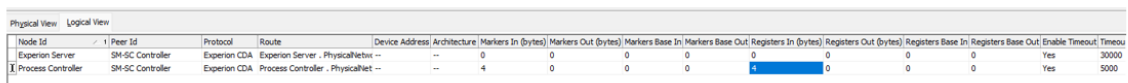
3. Right click on Process Controller – assign the C300 controller name and IP Address



4. Click on Logic View to add Logical connection between C300 and SMSC and Add Logic connection.



- Add C300 in Node ID ((select from drop down list)
- Add SMSC in Peer Id (select from drop down list)
- Click on “Protocol” field, Protocol and Route are added automatically.
- Define Marker in and Register In bytes.
- Timeout setting shall be 5000.

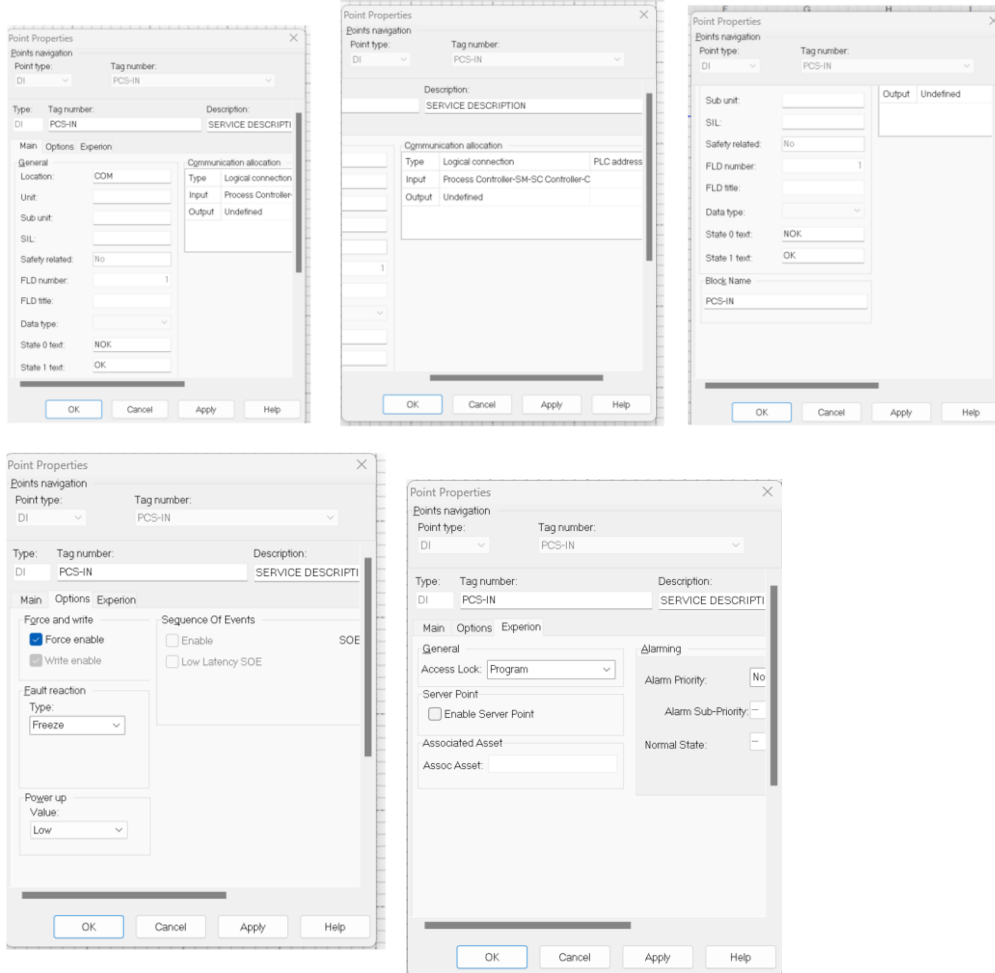


5) Click on Logic Click on Application editor.

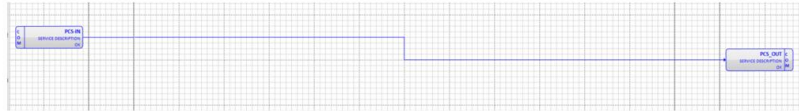
PCS – DI Com:

Click on DI tag to create a new point for PCS. Follow below settings.

- Location – COM
- Logical connection: assign newly configured C300-SMSC here.
- Block Name – as per project philosophy.
- FLD Tag name on FLD Property - as per project philosophy
- Fault Reaction – FREEZE
- Force Enable -YES
- Access Lock - Program

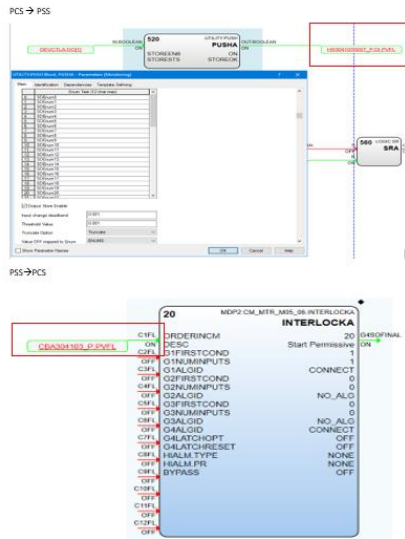


6) After Configuration, Download the controller and publish the point.



7) After Publish, the point can be configured in **C300** as follows.

In Control builder, you can use Push block/INTERLOCKA block to connect the SMSC points as follows.



ESCALATION MATRIX FOR A SI ASSIST REQUEST

Level of escalation	Escalation Timeline	GES Escalation Contact	Regional / Pole Leaders Contact	SI Program Contact
1	2 Days	<u>Mukesh Chaudhari</u>	Regional Product Business Leader	N/A
2	4 Days	<u>Piyush Chaturvedi</u>	Regional Business Leader	<u>Sukheesh Gandhi</u>
3	6 Days	<u>Dipankar Rautray</u>	Pole General Manager	<u>Carlos Villa Rodriguez</u>



Sukheesh Gandhi
Sr. Offering Mgmt. Specialist



Mukesh Chaudhari
Sr. Systems Engineer Supervisor

MODULAR SYSTEMS TECHNICAL SOLUTION CONSULTANTS

North EU

[Waqar Amin](#)

South EU

[Maurro](#)
[Vaccarino](#)

Canada

[Dumar Jaramillo](#)

USA

[Bob Kotoski](#)

South AMER

[Raul Agundiz](#)

India

[Bhavin Patel](#)

China

[XueYong Shi](#)

MENA

[Nikhilesh](#)
[Muraleedharan](#)

RoAP

[Razizuddin Razali](#)
[Permadi Sandi](#)

Honeywell © 2024. All rights reserved.

This Newsletter is produced for Honeywell System Integrators only and not for further distribution.