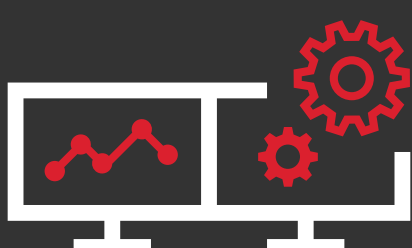


Honeywell Trace™

Documentation & Change Management
Software for Better Decisions



KEY FEATURES



SMART
CHANGE
TRACKING



HARDWARE,
NETWORK AND
GRAPHICAL VIEWS



COMPREHENSIVE
TAG
REFERENCE



SYSTEM
PERFORMANCE
ASSESSMENTS



ADVANCED
PARAMETER
QUERYING



CHANNEL
SPARE
MANAGEMENT

Honeywell Trace™ reduces configuration errors, improves troubleshooting, avoids unplanned shutdowns, captures experienced workers' knowledge, records control strategies, and improves auditing and regulatory compliance.

25%

More Uptime

300x

Times Faster Data
Collection

80%

Reduction of Manual
Documentation

50%

Reduction and
Acceptance Test
Time

Screen Slideshow Animation

ABOUT

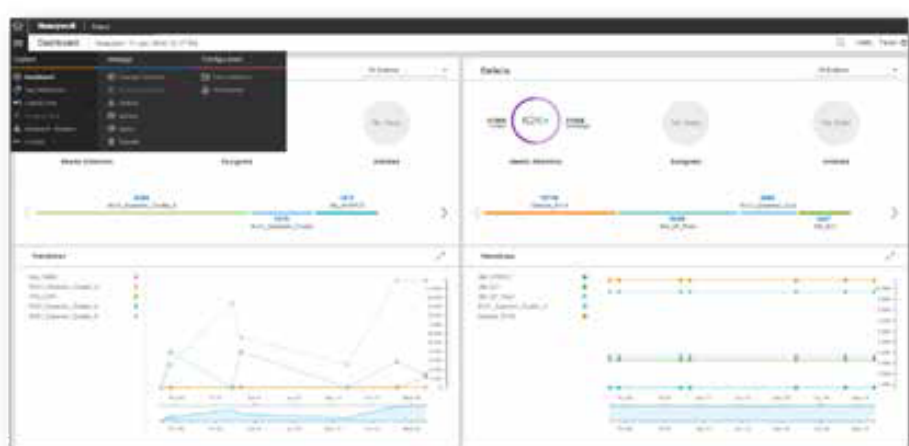
Honeywell Trace is a powerful data collection software and change management system. Documenting data up to 300 times more frequently than other solutions and providing the most powerful search and analysis functions, it helps reduce costs, increase reliability and boost performance.

Replacing paper-based records and spreadsheets with an automated solution, Honeywell Trace provides greater, faster, deeper insight into system set-up, configuration changes and system health for more efficient troubleshooting and project planning.

Comprehensive Tag Reference Search

CHALLENGE Understanding of Data Flows, Navigation of Connected Tags, & Knowledge Share

SOLUTION Wildcard & Global Search Protocol w/ Document Attachment in 3 Viewing Options



HOW IT WORKS

Honeywell Trace™ records regular system "snapshots" – as often as every three to four hours – and proactively detects and records changes. It offers configurable on-demand system performance assessments and smart change analysis with workflows. Honeywell Trace™ will be your tool of choice for tracking, validation, audit verifications, and troubleshooting of changes that occur in your system.

PLANT WITHOUT HONEYWELL TRACE™

- Lack of Holistic View of All the Systems
- Difficulty in Tracking System Changes Using Spreadsheets
- Key Data Difficult to Access
- Takes too Many Days to Capture Data
- No View into Degradation of System Performance when Changes Occur

PLANT WITH HONEYWELL TRACE™

- Snapshot Comparisons Help Quickly Identify Unauthorized Changes and Engineering Anomalies
- Reduces Project Planning
- Increases Troubleshooting
- Smart Change Detection
- Provides Easy Sorting and Filtering
- Reduces Clutter in Data
- Restricts Unauthorized Changes
- Prevents Downtime