



# CONTENTS

# PAGE

Decarbonization your operations

Safe and reliable grid injection of renewables

Compact standardized solutions

Proven technology for piece of mind

Always in control through remote access



# DECARBONIZE YOUR OPERATIONS

## Replace fossil with renewables

In the challenge to reach net zero green house gas emissions by 2050, renewables gasses play an increasingly important role. These ambitious targets can not be met without renewable fuels like biomethane and green hydrogen. Because electrification is not always a viable solution, hard to decarbonize industries often have limited alternatives for using fossil gas to run their operations. The transportation and distribution of these renewable gasses can in many cases be achieved by using the natural gas grid. Honeywell is dedicated to support the injection of renewable gases into the gas grid by offering pre-packaged solutions that allow grid operators and industrial users to reduce their carbon footprint at optimal cost.





# SAFE AND RELIABLE RENEWABLES INJECTION

## Safeguarding your pipeline integrity

To enable safe injection of renewable gases into your gas grid it is of vital importance to use first-class and proven technology for gas quality measurement, pressure control, system automation and telemetry.

With over 200 renewable grid injection systems in operation, our solutions are industry leading and their reliability has been proven over many years. As a pipeline operator you simply can't afford any off-spec gas to compromise the integrity of your pipelines because safety always comes first. Honeywell grid entry solutions comply with all applicable safety standards and regulatory compliance is guaranteed.





# COMPACT STANDARDIZED SOLUTIONS

## Cost reduction through standardization

Capex, ease of installation and low maintenance requirements are key elements in reducing the total cost of ownership of your grid entry unit. We developed our grid entry solutions with cost savings in mind. Our extensive track record in producing and delivering grid entry systems enables us to deliver solutions at optimum cost and with the highest quality and performance level.

Continuous design and product improvements have led to optimized maintenance requirements and a system that guarantees an effective commissioning and start-up.

Learn more about the way we support our customers with decarbonizing their operations and get a closer view to the solutions we have build to do this by watching the video from the link below.

WATCH VIDEO 



# PROVEN TECHNOLOGY FOR PIECE OF MIND



**EnCal 3000 Biogas** gas chromatograph - stays at the heart of our system. This specific biogas version of the mems based gas chromatograph eliminates the need for other gas quality analyzers or sensors for critical molecules in the gas, like oxygen and sulfur containing components.

With close to 400 GC's in biomethane applications you can be sure that any undesired quality changes will be registered and no off-spec gas will enter the gas grid. Pipeline integrity is protected and valuable biomethane will only be rejected when it is really needed.



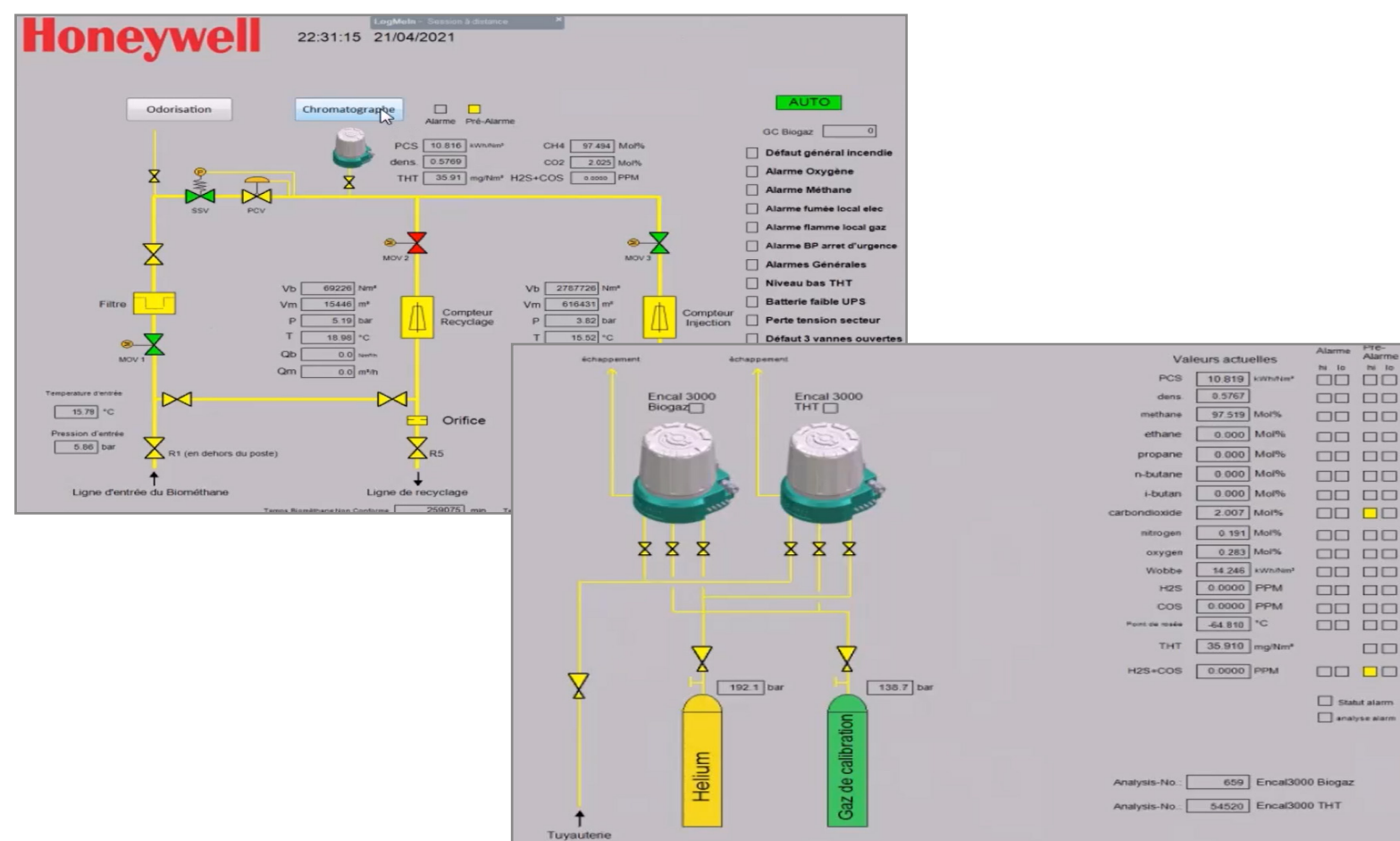
**GasLab Q2** analyzer can be used in addition or as an alternative to EnCal 3000. This is a fast-acting analyzer that can detect sudden changes in the gas composition and can be used to prevent off-spec gas injection or to control the blending of propane to increase the heating value of the biomethane.



# ALWAYS IN CONTROL THROUGH REMOTE ACCESS

With remote access to your grid entry unit we offer the possibility to monitor your system's performance and be informed in case any action is required. Via a secured internet connection, you will be able to get access, any time and from anywhere, to crucial metering and operational data.

Always in control to prevent unpleasant situations.







# INJECT CONFIDENCE INTO YOUR GRID.

[CONTACT US >](#)

**Honeywell** | THE FUTURE IS WHAT WE MAKE IT