



Honeywell Users Group 2011

Where Technology Shapes Solutions.


Jeff Spaulding

UIS Customer Co-Chair

Honeywell

User Input Subcommittee (UIS)

The UIS is chartered by the Users Group Steering Committees to provide mechanisms for customers:



To **submit enhancement requests** for Honeywell global installed systems

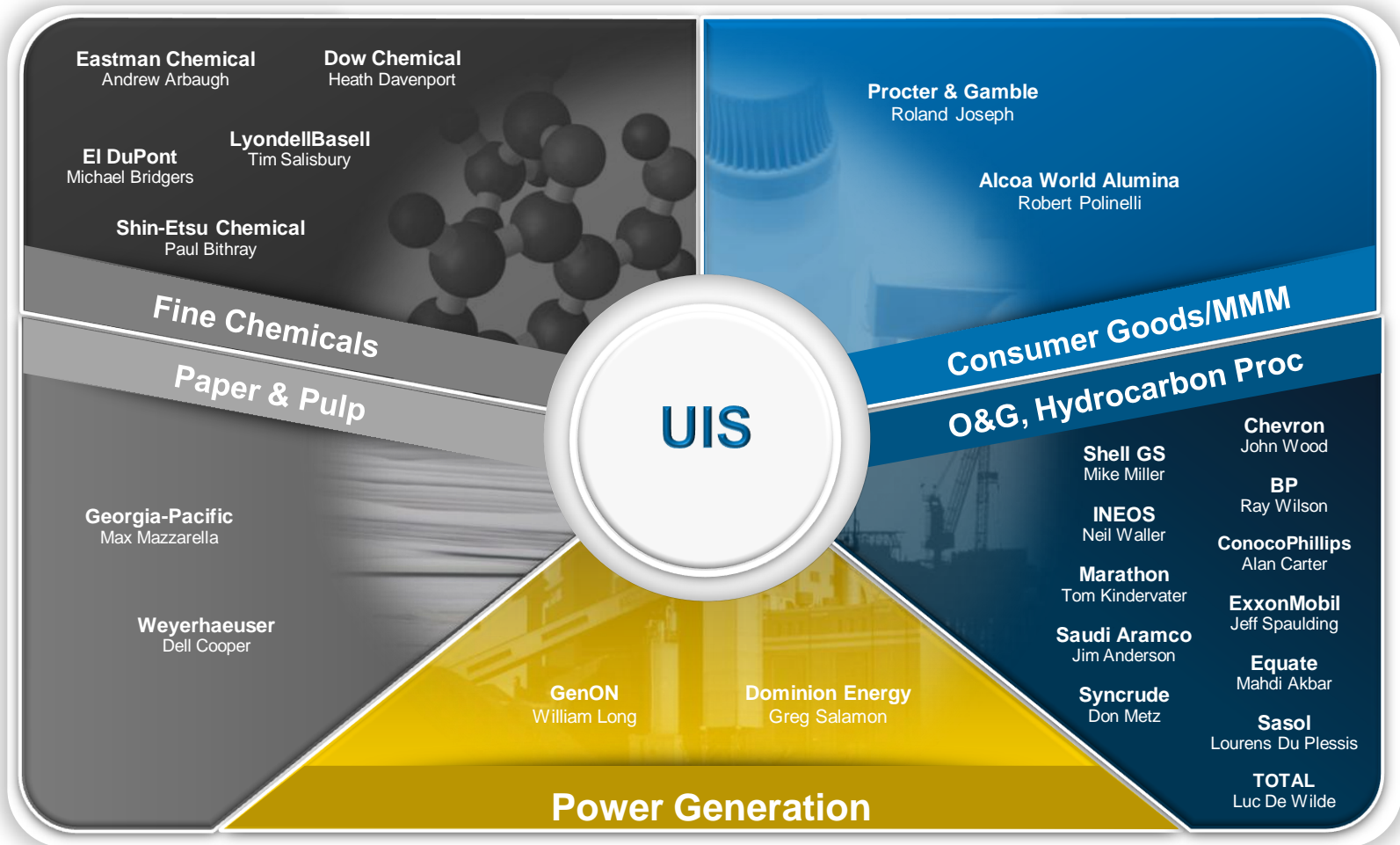


To **coordinate and prioritize customer input** into Honeywell product releases

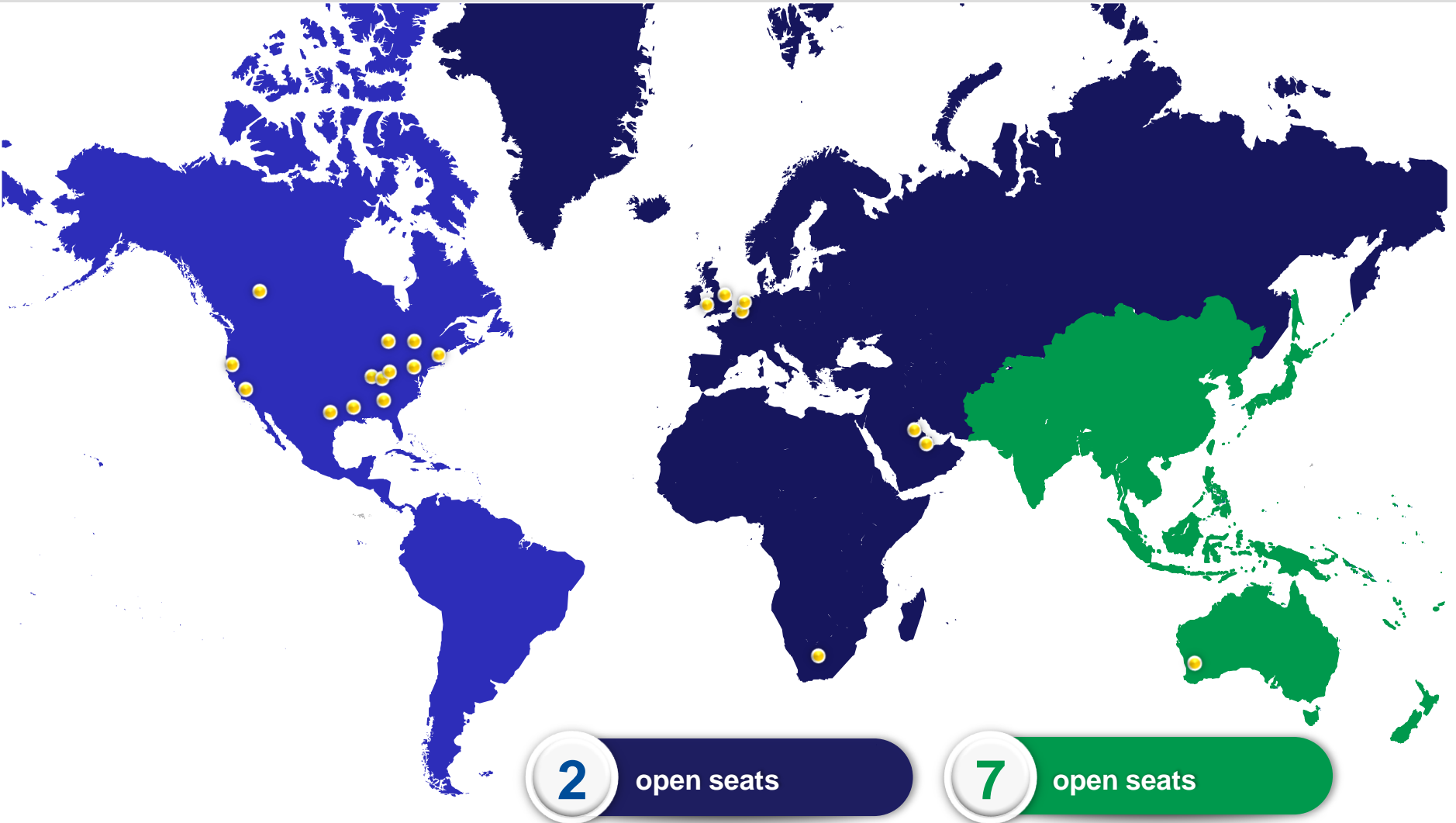


To **comment on effectiveness** of current maintenance activities, support activities, and new product migration planning

Industry Market Representation



Global Representation



UIS Enhancements – Experion R400 and TPN 683

Engineering Efficiency

- Increase DSA Server Limit
- Increase HPM Calc Block characters
- Additional AUXCALC Function Block Constraints
- Counter Function Block
- Control Builder Search Enhancements
- HMI Web File Clean Compress Utility
- HMI Web Builder Test Mode
- Maintain Reg Control alarm priority in EB files
- Deviation Alarm for HiLoAvg and MidOf3 algorithms
- System Alarms Documentation: Causes, Consequences, Actions
- Technical manual usability improvements

Investment Protection

- Auto Priming of TPS Points
- LCN Cable Diagnostic Tool
- View Only Accounts with Sign On Mgr

User Effectiveness

- Add Message Clear
- Enhance PIDA Loop Tune
- Create Message Pop-up
- Add Indicators to EPKS Faceplates
- Modify Mode Behavior After IOL/IOP Comm Error
- Rolling Average Function Block
- Active Alarm Line Addition

Reliability

- APP Node failure alarm
- Enhanced Alarm Metrics

UIS Enhancements – Experion R410 and TPN 684

Engineering Efficiency

- Enhance Configuration Studio Search
- Enhance Control Builder Import
- Automatic Daylight Savings Time for controllers
- Technical manual usability improvements
- System Alarms Documentation: Causes, Consequences, Actions

Reliability

- Enhance TPNServer OPC client information
- Disabling of USB ports on PKS stations and servers
- Increase OPC Connectivity capability

User Effectiveness

- Bio-Metric SignOn Method
- ACK key with faceplate
- Separate message alarm from low priority alarm
- Individually assignable system alarm assets

Investment Protection

- Alarm Suppression
- TPS System alarms on EPKS System Alarm Summary
- TPS Audible functionality in EPKS
- Consistency in Experion-TPS Point Detail and Native Window Point Detail displays.
- Consistency of ACK button in Experion displays with US and GUS displays
- C300 OnLine Parameter Changes while active

User Effectiveness

- Control room operator is a major customer of the control system
 - User effectiveness enhancements are actively promoted in UIS process
- Consistency enables safety, reliability and efficiency
 - Makes Users more productive
 - Fewer operator errors, safer operations
 - Reduced operator retraining required
 - Increased reliability

Investment Protection

- Retain intellectual property while taking advantage of new technology and capability
 - 30+ year old technology and infrastructure can be used with and enhanced by new capabilities
- Stepwise HMI migration while retaining existing control configuration and wiring
- Take advantage of new capabilities such as procedural operations over TPN

UIS Enhancements – Experion R400 and TPN 683

Engineering Efficiency

- Increase DSA Server Limit
- Increase HPM Calc Block characters
- Additional AUXCALC Function Block Constraints
- Counter Function Block
- Control Builder Search Enhancements
- HMI Web File Clean Compress Utility
- HMI Web Builder Test Mode
- Maintain Reg Control alarm priority in EB files
- Deviation Alarm for HILoAvg and MidOf3 algorithms
- System Alarms Documentation: Causes, Consequences, Actions
- Technical manual usability improvements

Investment Protection

- Auto Priming of TPS Points
- LCN Cable Diagnostic Tool
- View Only Accounts with Sign On Mgr

User Effectiveness

- Add Message Clear
- Enhance PIDA Loop Tune
- Create Message Pop-up
- Add Indicators to EPKS Faceplates
- Modify Mode Behavior After IOL/IOP Comm Error
- Rolling Average Function Block
- Active Alarm Line Addition

Reliability

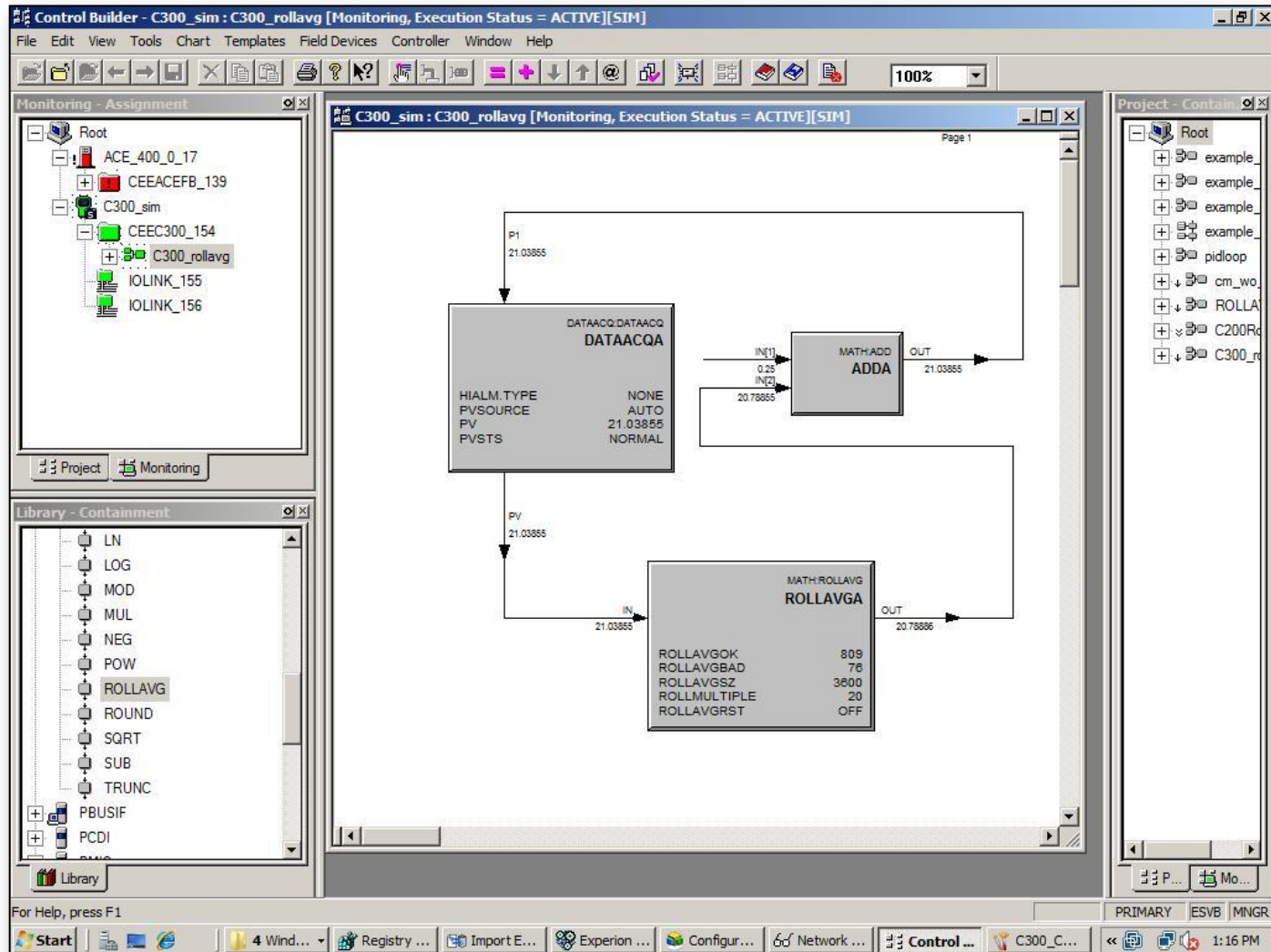
- APP Node failure alarm
- Enhanced Alarm Metrics

Experion Rolling Average Function Block

Overview:

- UIS created a Rolling Average feature in AM several years ago
- For consistency, a User suggested that we add the same functionality to Experion
- UIS selected the Rolling Average Function Block as an enhancement for R400
 - Configurable number of samples
 - Configurable sample rate (a multiple of control module frequency)
 - Quality of value is determined by the number of good samples vs. bad samples
- Runs in C300, C200E, ACE, ACE-T and the simulation variants of these CEEs

Experion Rolling Average Function Block



Rolling Averages

Challenge

- Emission regulations require 3 hr, 12 hr, 24 hr rolling averages on emission limits
- Manual/script-based storage of values in numeric arrays or customer CAB blocks needed to meet requirements

Solution

- Automatic capture of measurement values

Benefit

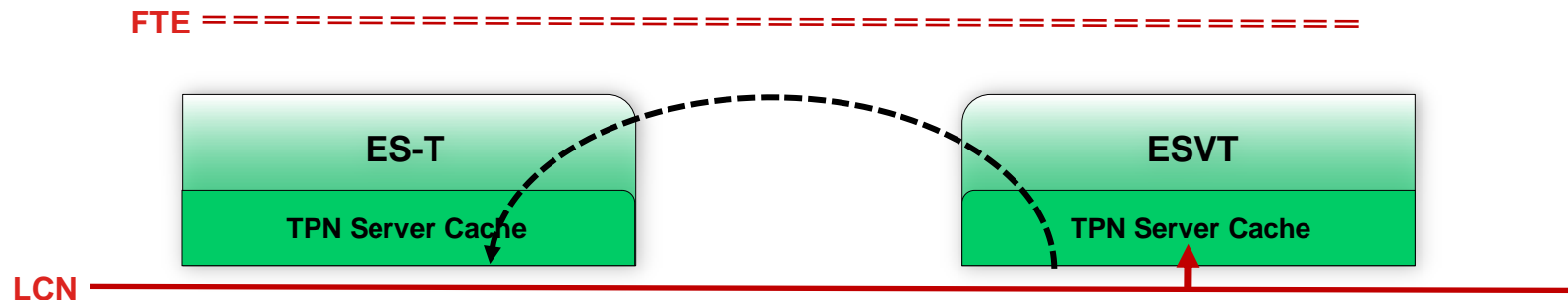
- Saves engineering time
 - Does not require writing CAB in ACE to perform rolling average calculations
- Reliable tracking for regulatory audits
- Reduced risk of not meeting regulatory requirements

Auto Priming in Experion R400

- Reduces engineering maintenance of a TPS-connected Experion system
 - Automatically resolves external to internal ID conversion when system is started
 - ESVT “sees” point builds on LCN and resolves new points as well
 - Robust, reorganized TPN server cache
 - Reduces the size of the cache
 - Infrastructure versus manual activity
 - Users no longer need to run DSPPrime to preload all points
 - Creates value in more than one way

Auto Priming in Experion R400

- ESVT TPN server auto-primers all points and parameters on the LCN
 - Every time TPN server on the ESVT node starts up
 - Sensitive to point builder events (e.g., new point added)
 - TPN server cache compacted
- Other nodes in the cluster (ES-T, ACE-T) lookup results of the conversion from the ESVT
 - Imported into local TPN server cache on first ever lookup



Auto Priming of TPS Points

Challenge

- Slow initial graphics performance on ES-T for TPN points
- Time consuming manual priming and cache duplication procedure
- Significant computer memory for cache

Solution

- Automatic initial discovery of all TPN points
- Automatic cache synchronization between all nodes
- Optimized cache stores largest TPN supported with minimal computer resources

Benefit

- Fast graphics performance even on initial use
- Zero engineering to manage cache
- Minimal computer memory for cache

Solving Your Problems with Product Enhancements



- **Enhancement suggestions can be submitted** by any Honeywell customer
- The UIS process **transforms your requests** into product functionality
- **Your ideas** – turned into UIS enhancements – **have improved plant operations for the past 18 years**

User Input Subcommittee



- View the UIS Demonstration Area
- Participate in the UIS Update Session, Monday at 12:45 pm
- Enter enhancement ideas via the web www.uis.honeywell.com
- Become a member – there are UIS membership opportunities



Honeywell Users Group 2011

Where Technology Shapes Solutions.

Honeywell